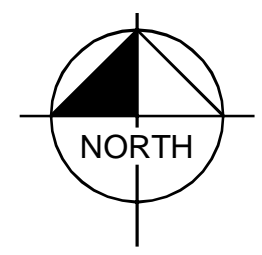
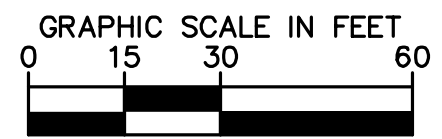
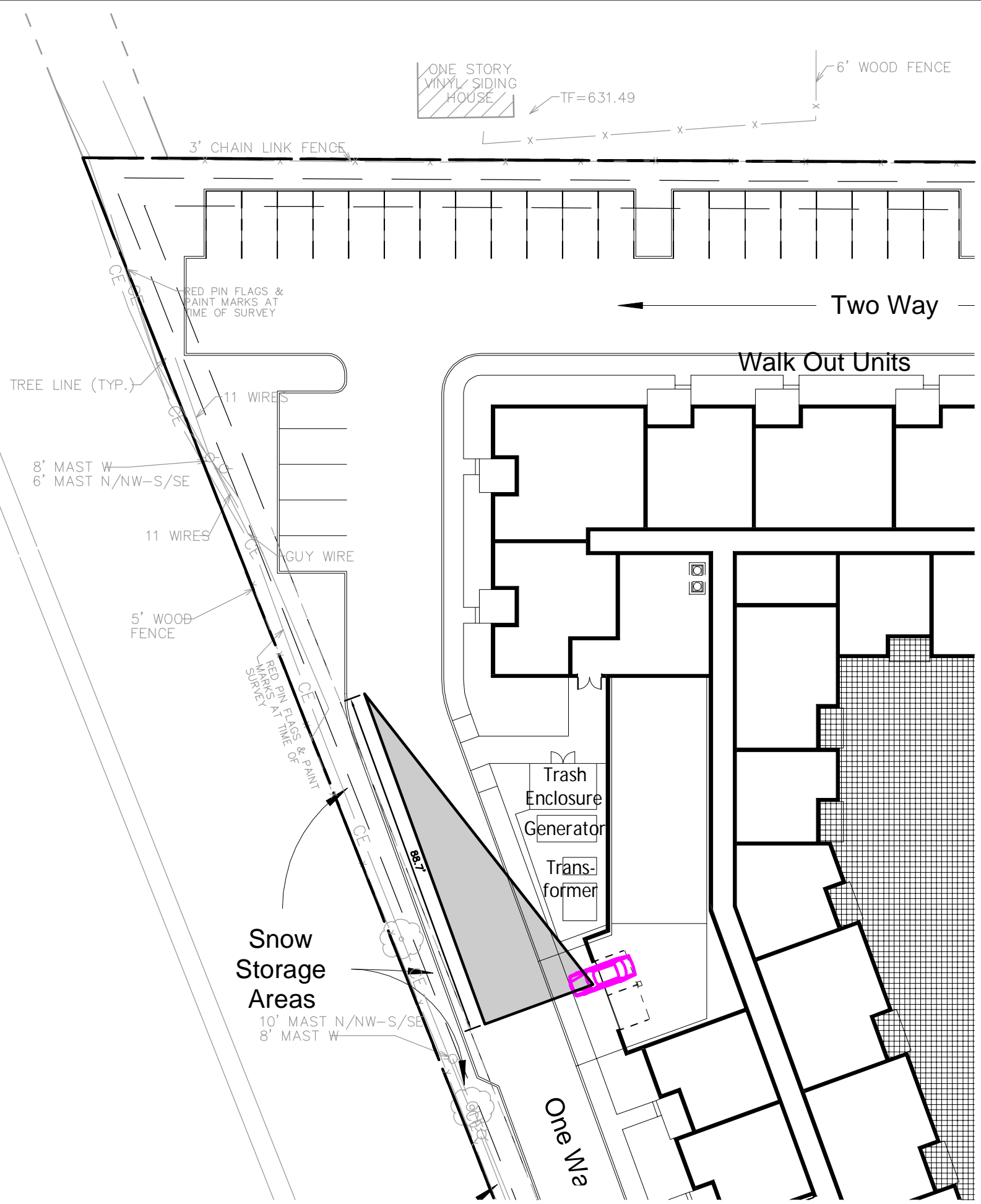


SITE SUMMARY	
BUILDING	
UNIT COUNT	176 UNITS
BUILDING AREA	1.53 AC
POOL COURTYARD AREA	0.48 AC
TOTAL LOT AREA	3.23 AC
PARKING	
SURFACE PARKING SPACES	64 SPACES
GARAGE PARKING SPACES	168 SPACES
TOTAL PARKING SPACES	232 SPACES

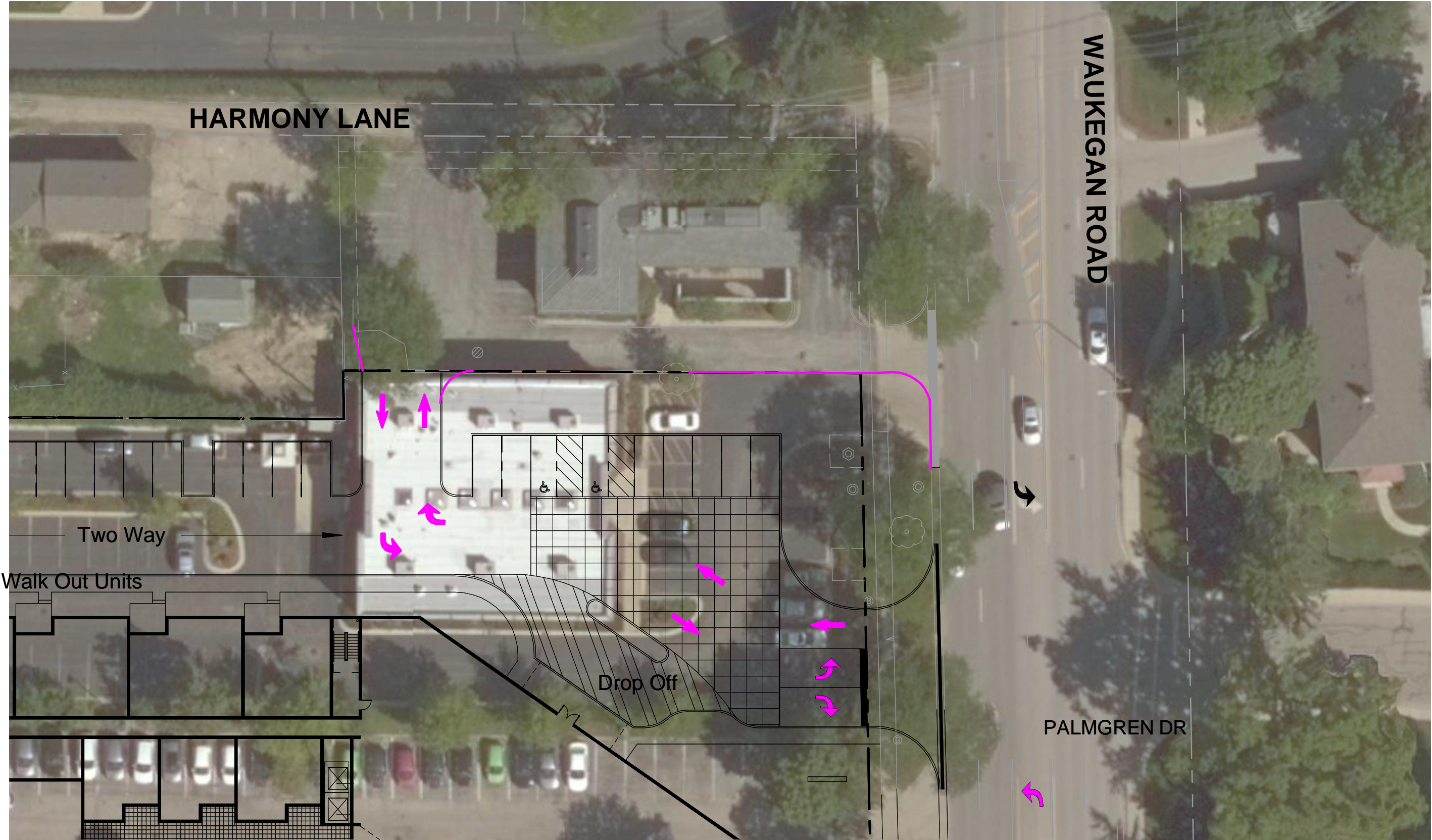
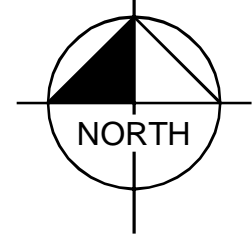
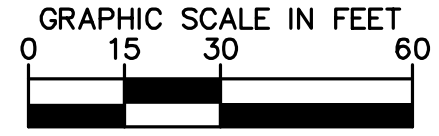
August 2, 2017 12:00:17 PM at: \\C:\Users\jordan\Documents\Projects\Glenview\AS\Drawings\04-35-314-046-0000\04-35-314-046-0000_P1.dwg - CONSULT: PLANNING
This document, together with the accompanying computer generated sheets, is intended only for the specific project and shall not be used for any other project without the written consent of Kimley-Horn and Associates, Inc. All rights reserved.

Plotted By: July 31, 2017 10:34:39 AM H:\VINTAGE\RESIDENCES\ACTIVE ADULT\Drawings\DWG\Residences_V017-0728_Sight_Triangle.dwg
This document, together with the computer and digital printed records, is intended only for the specific project and shall not be used for any other project. Release of any information contained herein is subject to the confidentiality and non-disclosure obligations of the client and its representatives. No warranty is made by the engineer or architect for the accuracy of the information provided herein.



NOTE

ACCESS PLANS ARE SUBJECT TO REVIEW AND APPROVAL BY THE VILLAGE OF GLENVIEW AND IDOT



Revised By: July 31, 2017 10:28:01 PM I:\04\100\10021008_Landscaping\Drawings\17-0731_Hornhorn_Proposed_Siteplan.dwg
This document, together with the drawings and design information herein, is intended only for the specific project and shall not be used for any other project without the written consent of Kimley-Horn and Associates, Inc. and shall be subject to the terms and conditions of the contract between Kimley-Horn and Associates, Inc. and the client.