

# Pine Street Streambank Stabilization

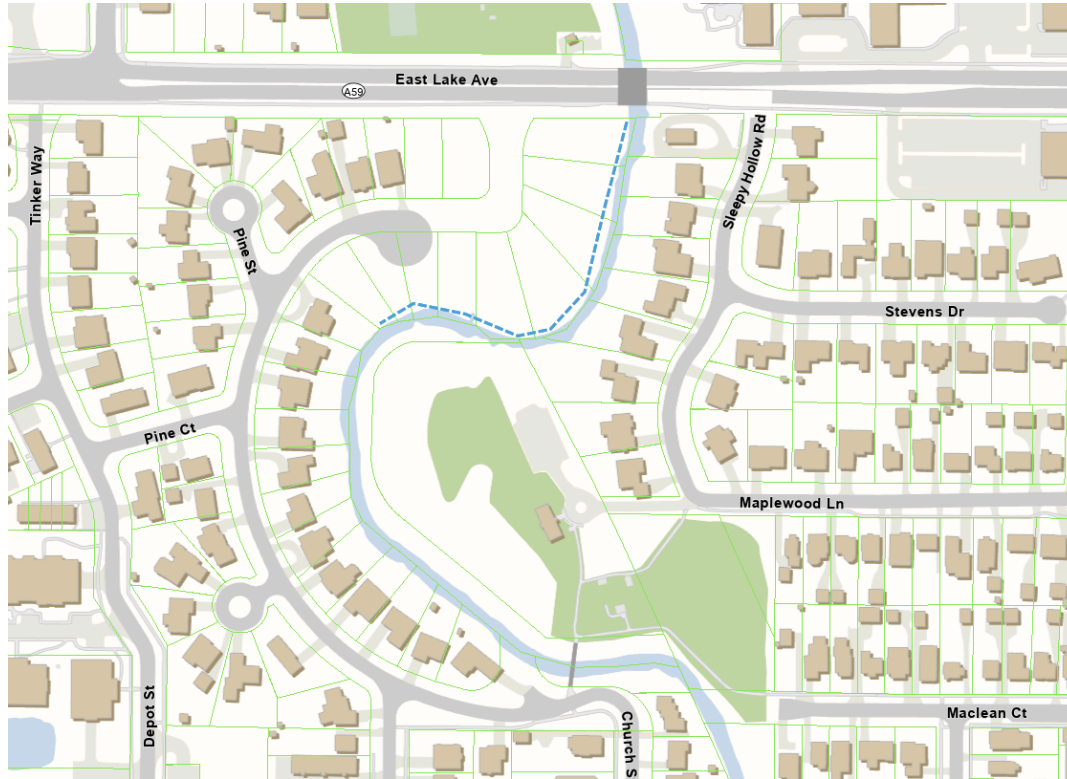
## Welcome!

Open House

September 10, 2020

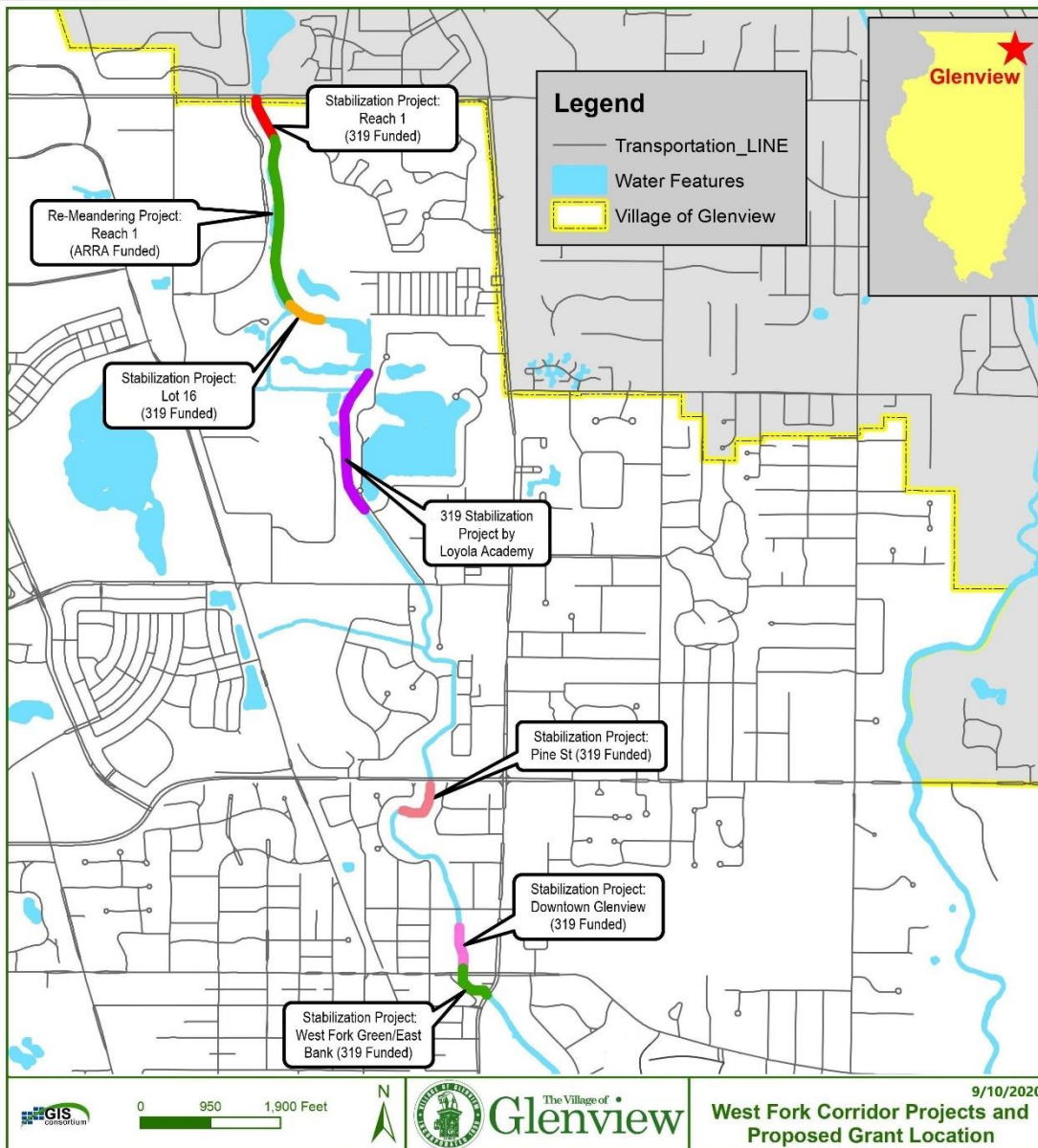


# Project Location and Limits



- West Fork streambank at the Pine St. cul-de-sac (approximately 760 feet along former residential property - floodplain buyouts)
- Project focuses on eroding banks causing sedimentation and pollution
- Construction year: 2021; all work to be completed on public property
- Funded through a federal Section 319 (Clean Water Act) grant

# Similar Projects



**Native perennials at Techny Basin.  
View to north.**



**West Fork along the Reach 1 project  
site. View to north.**

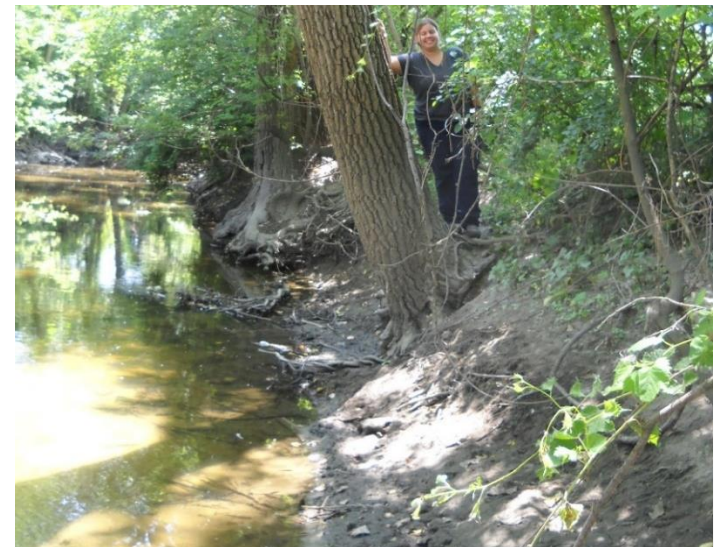


# Scope of Work and Benefit to Residents

- Bioswale and Raingarden Installation
  - Water retention and filtration
  - Aesthetic beauty
  - Habitat and resources for wildlife
- Streambank Stabilization
  - Erosion control
- Riffle-and-Pool Structure
  - Increased dissolved oxygen
  - Habitat restoration
  - Aids in streambank stabilization
- Tree Planting
  - Screening and privacy
  - Wildlife Habitat

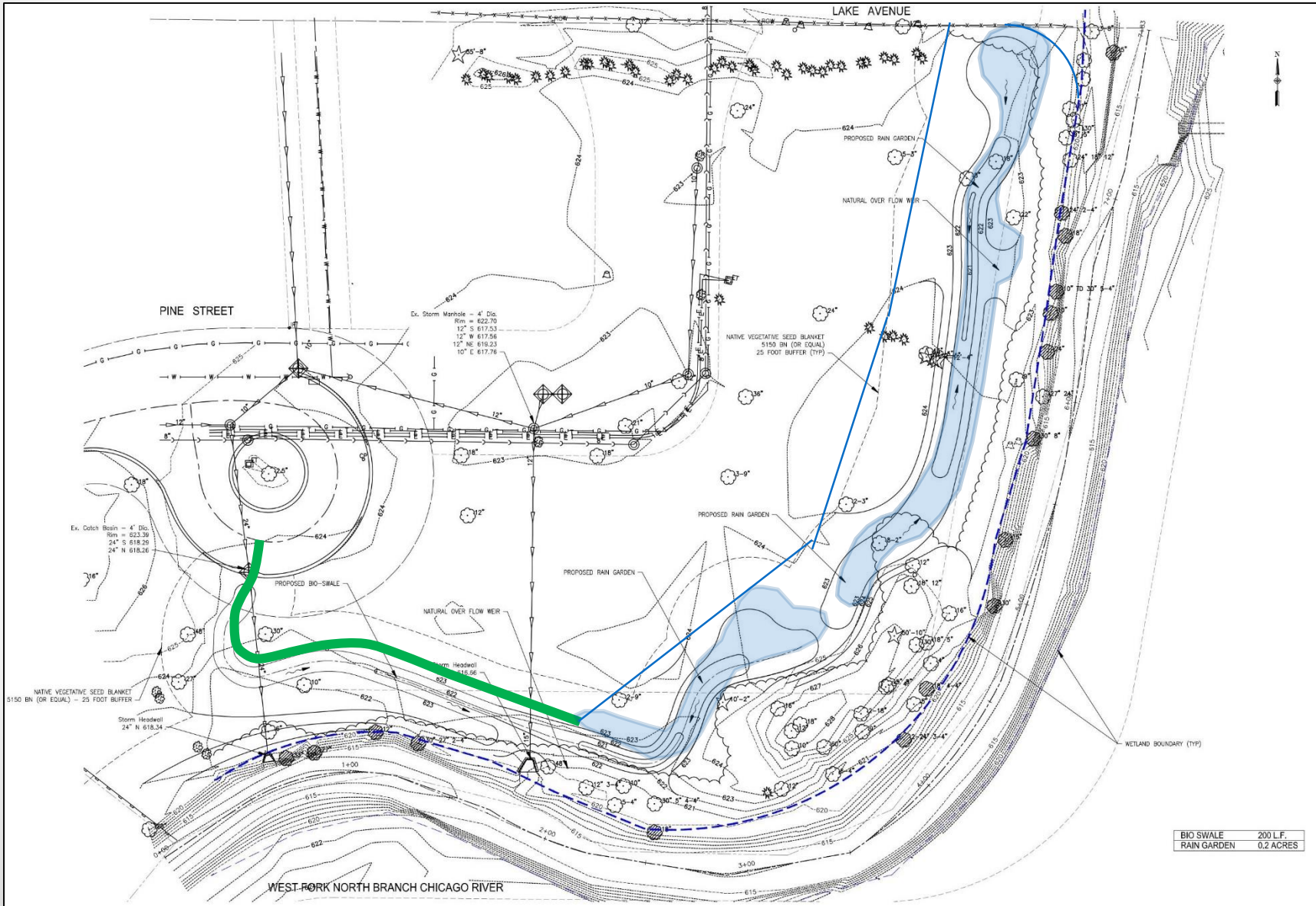


**Bald cypress at Lake Glenview.**

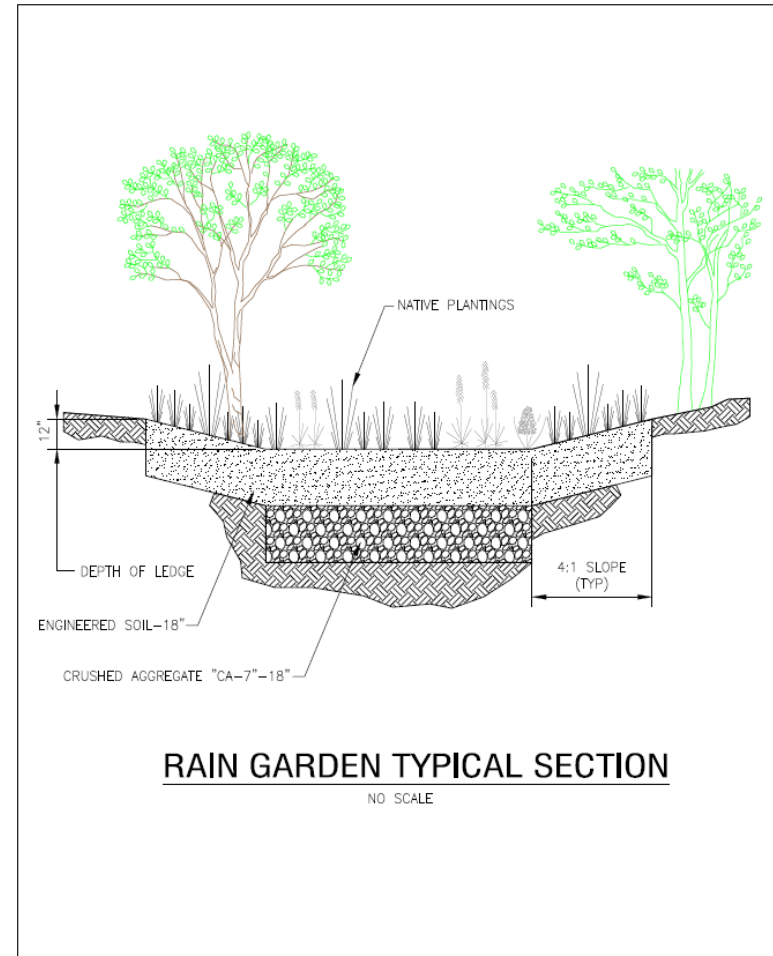
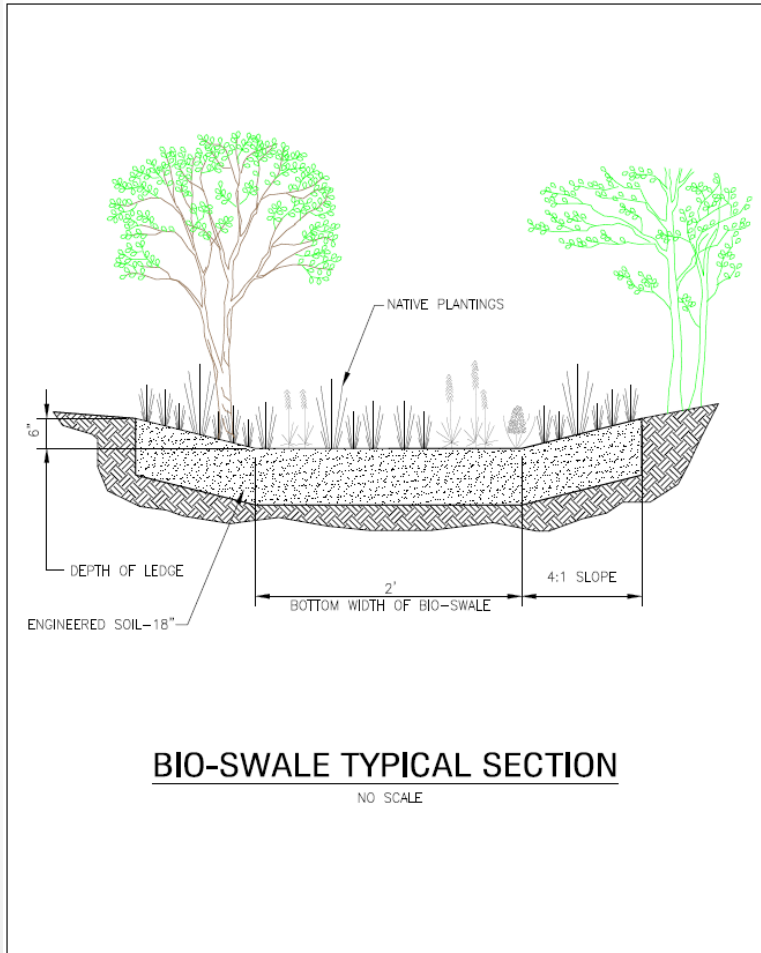


**Streambank erosion at Pine St. floodplain buyout parcel. View to west.**

# Design Elements - Park



# Design Elements - Park



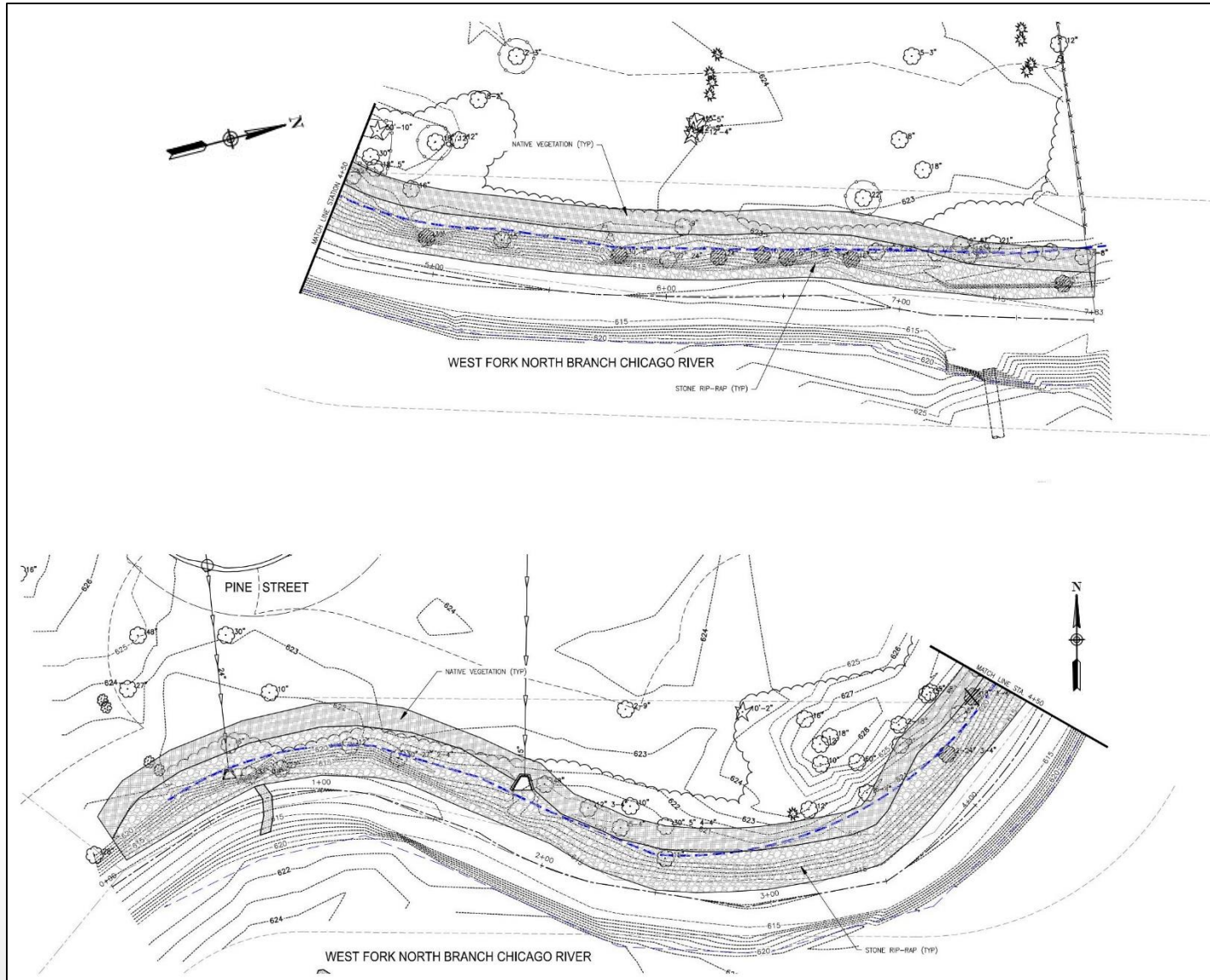


# Design Elements - Park



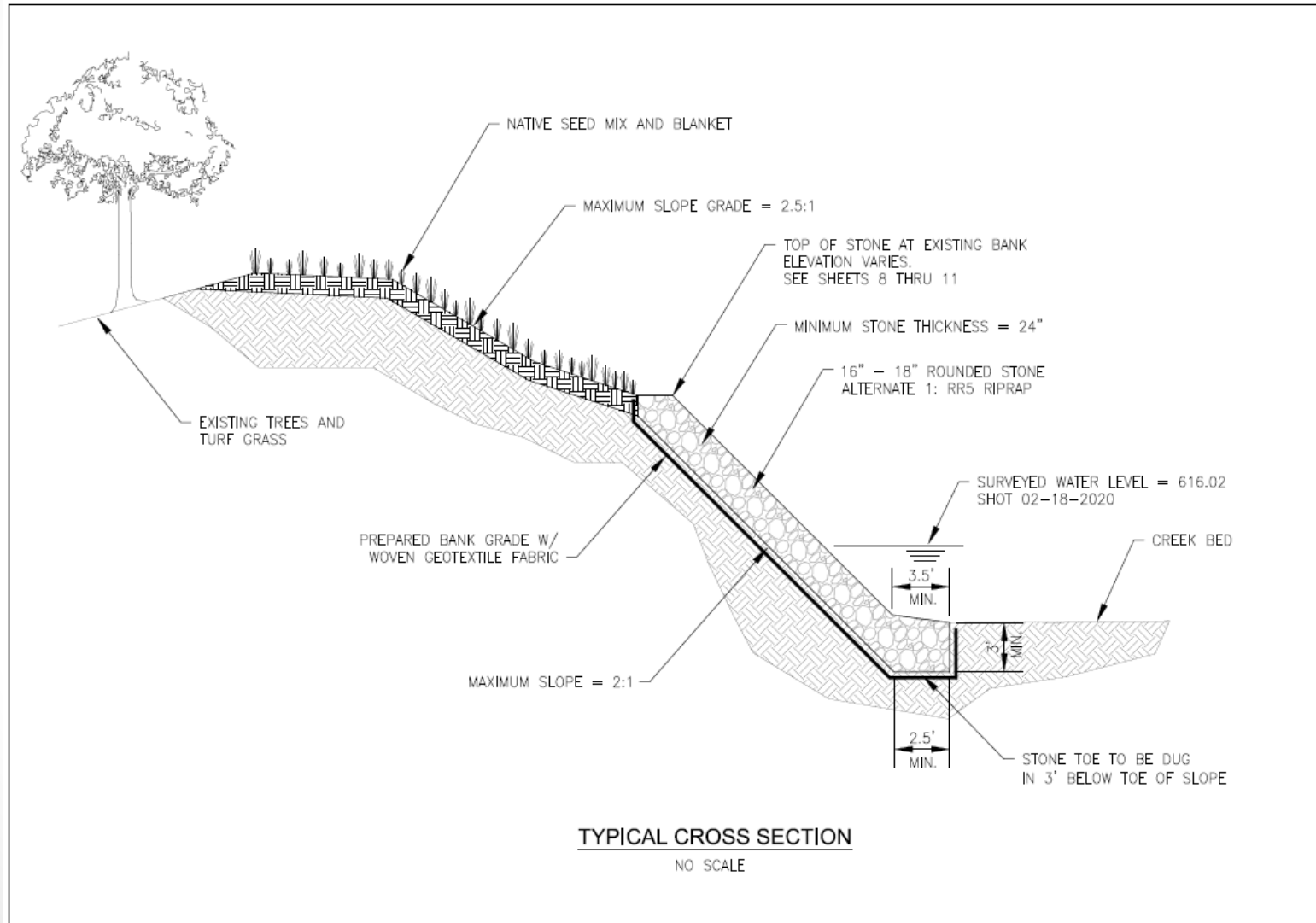
<u>Botanical Name</u>	<u>Common Name</u>
<b>Permanent Grasses/Sedges</b>	
<i>Bolboschoenus fluviatilis</i>	River Bulrush
<i>Carex cristatella</i>	Crested Oval Sedge
<i>Carex lurida</i>	Bottlebrush Sedge
<i>Carex vulpinoidea</i>	Brown Fox Sedge
<i>Elymus virginicus</i>	Virginia Wild Rye
<i>Glyceria striata</i>	Fowl Manna Grass
<i>Juncus effusus</i>	Common Rush
<i>Leersia oryzoides</i>	Rice Cut Grass
<i>Panicum virgatum</i>	Switch Grass
<i>Schoenoplectus tabernaemontani</i>	Great Bulrush
<i>Scirpus atrovirens</i>	Dark Green Rush
<i>Scirpus cyperinus</i>	Wool Grass
<b>Temporary Cover</b>	
<i>Avena sativa</i>	Common Oat
<i>Lolium multiflorum</i>	Annual Rye
<b>Forbs</b>	
<i>Alisma subcordatum</i>	Common Water Plantain
<i>Asclepias incarnata</i>	Swamp Milkweed
<i>Bidens spp.</i>	Bidens Species
<i>Eupatorium perfoliatum</i>	Common Boneset
<i>Helenium autumnale</i>	Sneezeweed
<i>Iris virginica v. shrevei</i>	Blue Flag
<i>Lycopus americanus</i> Common	Water Horehound
<i>Mimulus ringens</i>	Monkey Flower
<i>Penthorum sedoides</i>	Ditch Stonecrop
<i>Persicaria spp.</i>	Pinkweed Species
<i>Rudbeckia subtomentosa</i>	Sweet Black-Eyed Susan
<i>Rudbeckia triloba</i>	Brown-Eyed Susan
<i>Sagittaria latifolia</i>	Common Arrowhead
<i>Senna hebecarpa</i>	Wild Senna
<i>Symphotrichum lanceolatum</i>	Panicled Aster
<i>Symphotrichum novae-angliae</i>	New England Aster
<i>Thalictrum dasycarpum</i>	Purple Meadow Rue

# Design Elements - Streambank

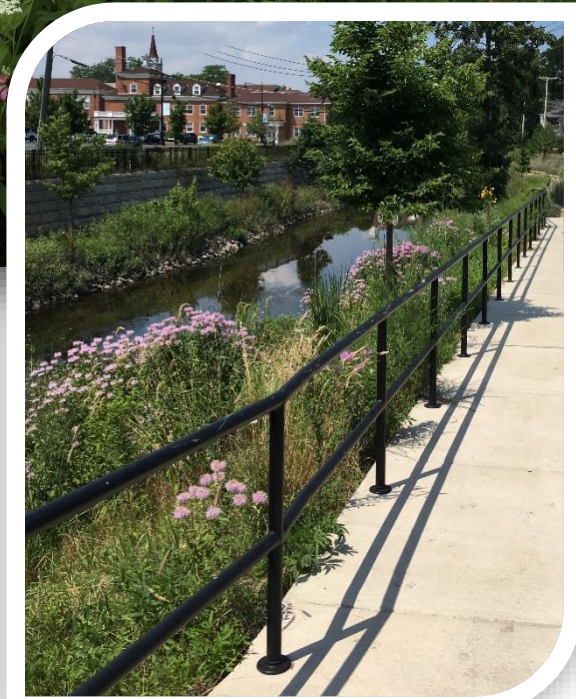




# Design Elements - Streambank



# Design Elements - Streambank



## Scientific Name

### Permanent Grasses/Sedges

*Andropogon gerardii*  
*Calamagrostis canadensis*  
*Carex lurida*  
*Carex stricta*  
*Carex vulpinoidea*  
*Elymus virginicus*  
*Juncus canadensis*  
*Panicum virgatum*  
*Scirpus cyperinus*  
*Sorghastrum nutans*  
*Spartina pectinate*

## Common Name

Big Bluestem  
 Blue Joint Grass  
 Bottlebrush Sedge  
 Common Tussock Sedge  
 Brown Fox Sedge  
 Virginia Wild Rye  
 Canadian Rush  
 Switch Grass  
 Wool Grass  
 Indian Grass  
 Prairie Cord Grass

### Temporary Cover

*Avena sativa*  
*Lolium multiflorum*

Common Oat  
 Annual Rye

### Forbs

*Asclepias syriaca*  
*Baptisia alba*  
*Chamaecrista fasciculata*  
*Coreopsis lanceolata*  
*Coreopsis tripteris*  
*Desmodium illinoense*  
*Doellingeria umbellata*  
*Echinacae purpurea*  
*Eryngium yuccifolium*  
*Helenium autumnale*  
*Helianthus grosseserratus*  
*Lespedeza capitata*  
*Liatris spicata*  
*Monarda fistulosa*  
*Oligoneuron rigidum*  
*Parthenium integrifolium*  
*Physostegia virginiana*  
*Pycnanthemum virginianum*  
*Ratibida pinnata*  
*Rudbeckia hirta*  
*Rudbeckia laciniata*  
*Rudbeckia subtomentosa*  
*Senna hebecarpa*  
*Silphium integrifolium*  
*Silphium laciniatum*  
*Silphium perfoliatum*  
*Silphium terebinthinaceum*  
*Solidago juncea*  
*Solidago rugose*  
*Symphotrichum nove-angliae*  
*Tradescantia ohioensis*  
*Vernonia fasciculata*  
*Cernicium virginiticum*  
*Zizia aurea*

Common Milkweed  
 White Wild Indigo  
 Patridge Pea  
 Sand Coreopsis  
 Tall Coreopsis  
 Illinois Tick Trefoil  
 Flat-Top Aster  
 Broad-leaved Purple Coneflower  
 Rattlesnake Master  
 Sneezeweed  
 Sawtooth Sunflower  
 Round-Headed Bush Clover  
 Marsh Blazing Star  
 Wild Bergamot  
 Stiff Goldenrod  
 Wild Quinine  
 Obedient Plant  
 Common Mountain Mint  
 Yellow Coneflower  
 Black-Eyed Susan  
 Wild Golden Glow  
 Sweet Black-Eyed Susan  
 Wild Senna  
 Rosin Weed  
 Compass Plant  
 Cup Plant  
 Prairie Dock  
 Early Goldenrod  
 Rough Goldenrod  
 New England Aster  
 Common Spiderwort  
 Common Ironweed  
 Culver's Root  
 Golden Alexanders

# Tentative Schedule and Next Steps

Dates	Steps
September 2020	Open House Meeting: <i>Residents view plans and provide feedback</i>
December 2020	Finalize Design Plans and Bidding Process
January 2021	Contract Award
January 2021	Pre-construction Resident Meeting
February/March 2021	Anticipated Start of Project
October 2021	Project Completion





# Contact Us !

## Written comment

Engineering/Capital Projects  
2500 East Lake Avenue  
Glenview, IL 60026

## Capital Improvement Program/Engineering

- Robyn Flakne
- Email address:  
[rflakne@glenview.il.us](mailto:rflakne@glenview.il.us)
- Phone: (847) 904-4536

## Project Information and updates

will be posted on the Village of  
Glenview Website and  
Construction Blog.