



Tall Trees Subdivision Infrastructure Improvements

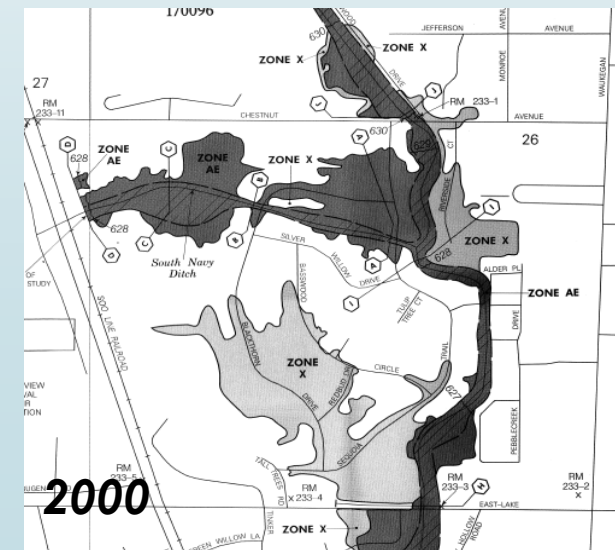
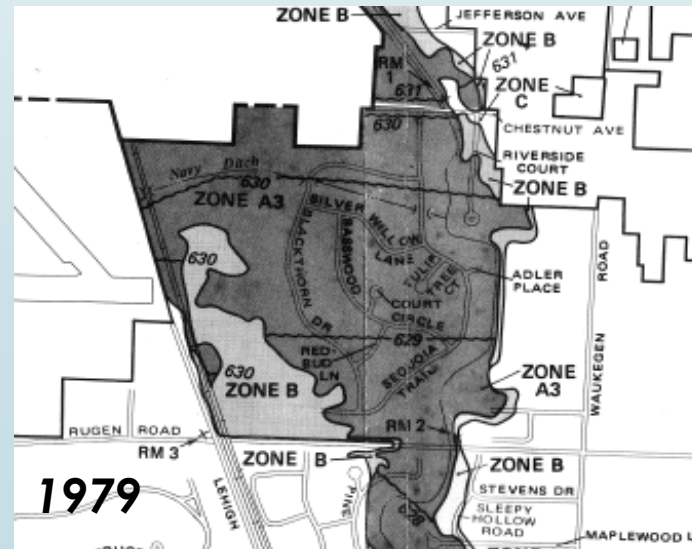
Design Meeting

December 4, 2023, 6 pm

Tall Trees Background and Characteristics

Development History:

- ▶ 1960-1962 (three phases) – platted and developed:
 - ▶ Storm sewer conveyance; however, no storm water detention, no overland flow paths and built low-lying in relation to the river
- ▶ 1979 – first FEMA Flood Insurance Rate Map (FIRM) mapped all of Tall Trees into the regulatory floodplain
- ▶ 1980/90s – Techny Basin expansion to 1,120 acre-feet
- ▶ 2000 – updated FEMA FIRM took approximately 2/3 of Tall Trees out of the regulatory flood plain



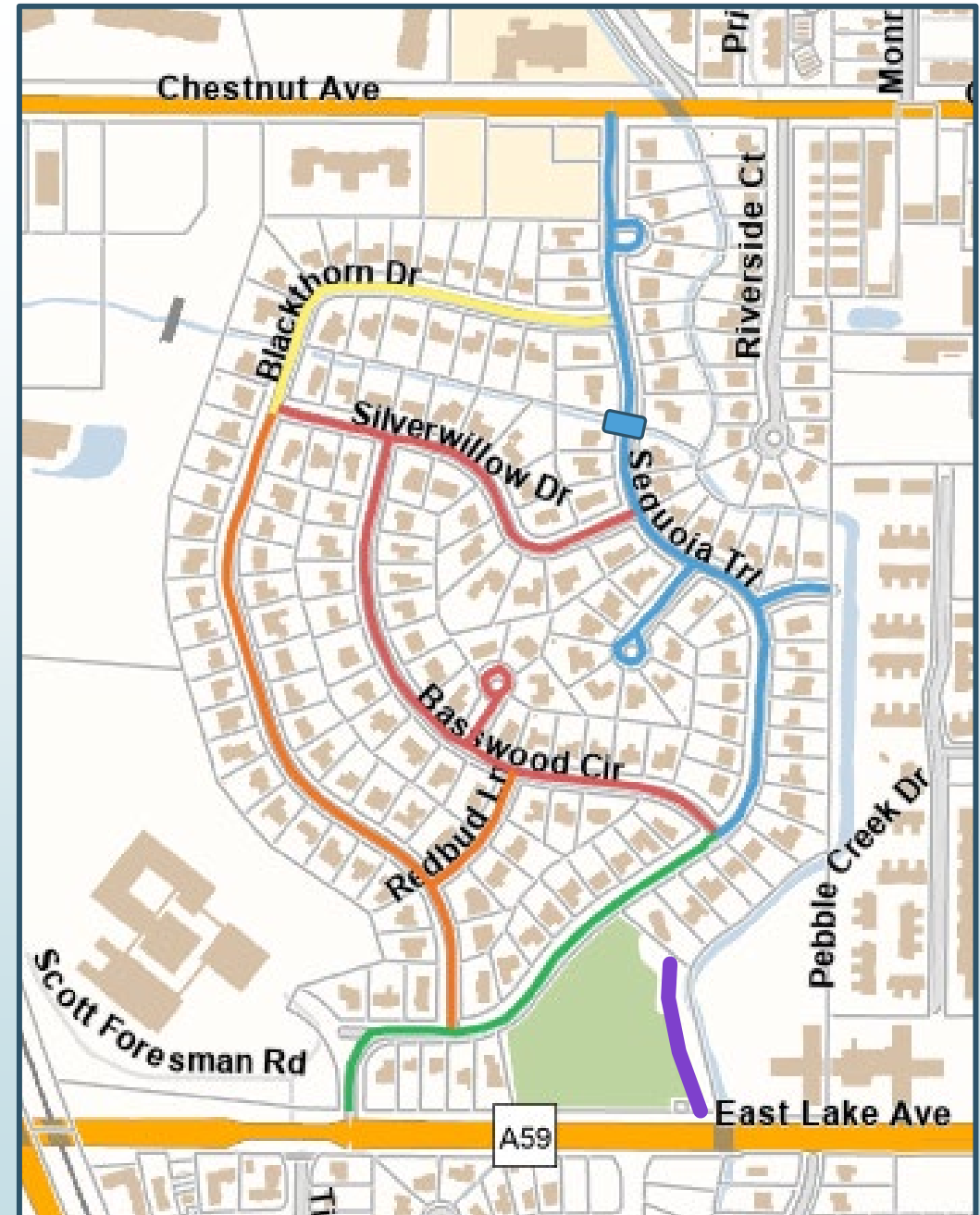
Recap of Previous Studies

Village/MWRD/ACE studies/planning history

- 2007 – MWRD established countywide goals for countywide storm water responsibilities
- 2007 – Techny Basin expansion study (STS/AECOM)
- 2009 – Chestnut Avenue detention studies (STS/AECOM)
- 2009-2010 – Village-wide modeling (MWH/Stantec) and Storm Water Task Force process
 - Resulted in the Village's *Flood Risk Reduction Program*
 - No local silver bullet to solve all flooding impacts
- 2011 – MWRD published a North Branch of the Chicago River watershed report and started concept engineering
- 2013-2014 – MWRD - multiple alternatives studied, including:
 - Regional storage, channel modifications, flood protection, buy-outs
- 2016-2020 – Army Corps of Engineer Feasibility Study –Section 205, including:
 - Floodwall along the river, Floodwall along Sequoia, Flood proofing
- **2019-2021 – Alternative Analysis Study and Proposed Projects (Current – Phase I-III)**
- **2023-2025 – Village wide Stormwater Master Plan Update**

PROPOSED PHASED IMPROVEMENTS

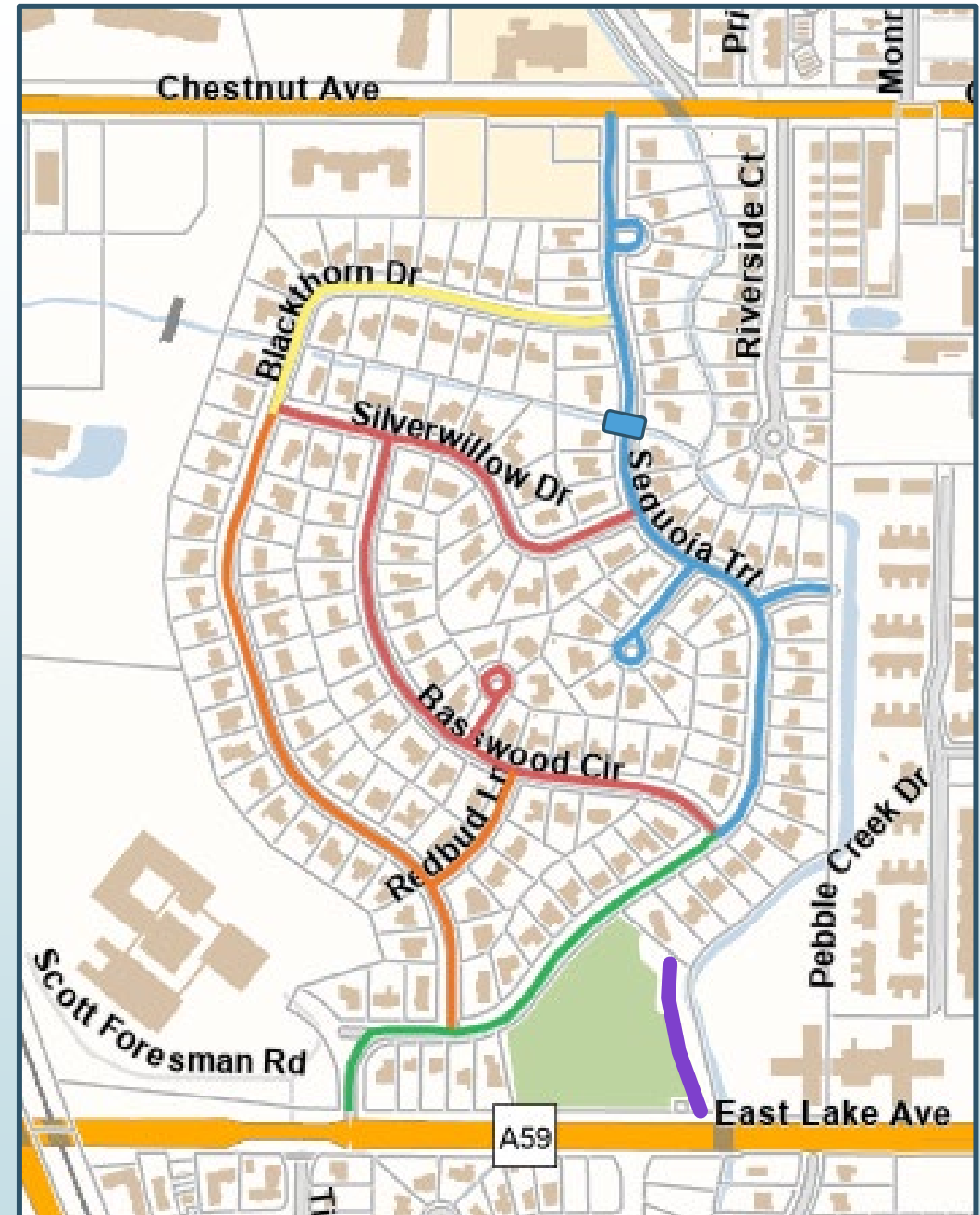
- 2018 IMPROVEMENTS
- PHASE I IMPROVEMENTS (2022 - 2023)
- PHASE II IMPROVEMENTS (2024)
- PHASE II IMPROVEMENTS (2024 - 2025)
- PHASE II IMPROVEMENTS (2025)
- PHASE III IMPROVEMENTS (2026 - 2028)



PHASE I VILLAGE PROJECT

Completed in 2022 & 2023

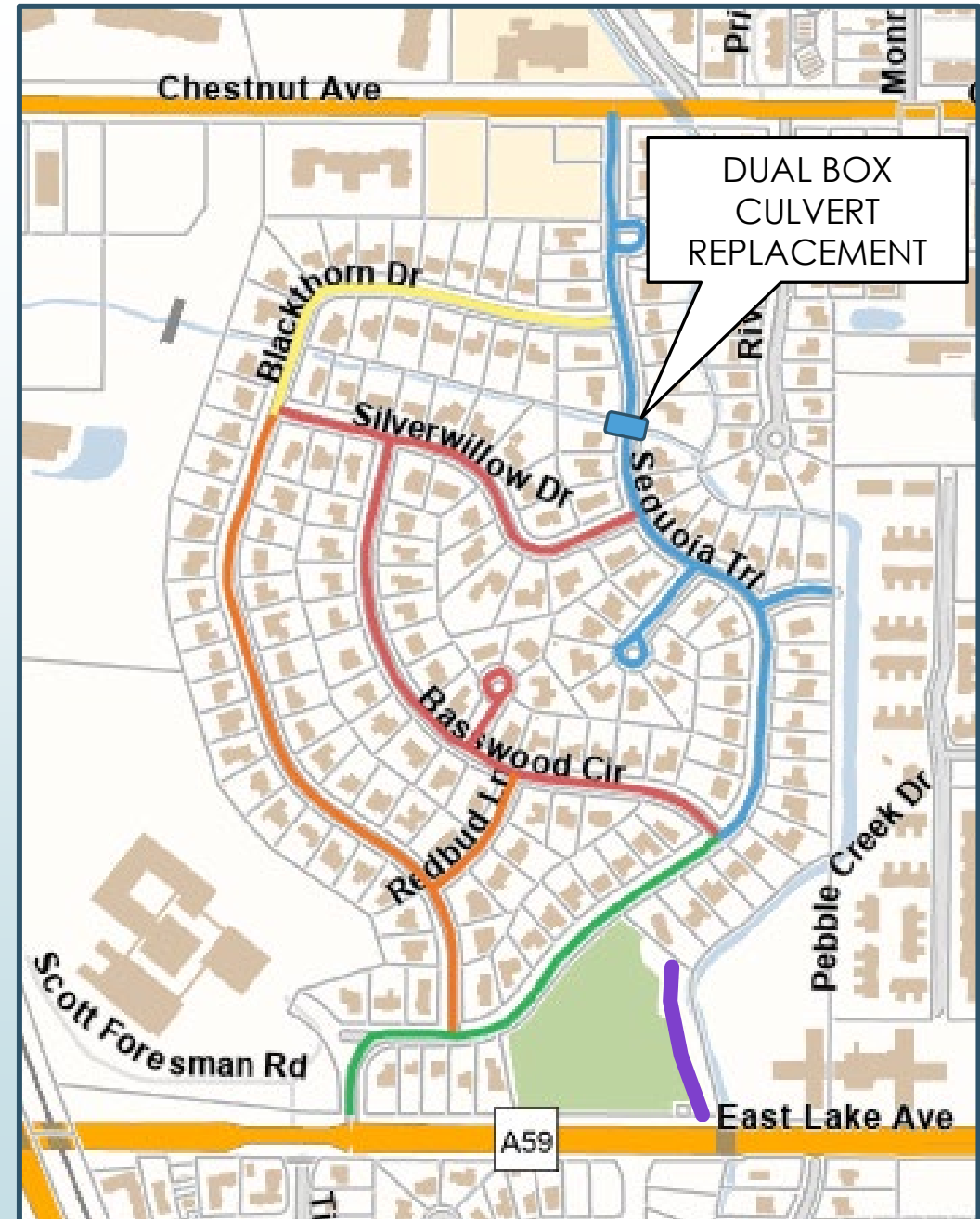
- ▶ Project Scope **(RED)**
 - ▶ Storm sewer, sanitary sewer, water main improvements
 - ▶ StormTrap storage system installation
 - ▶ Underground Pump station
 - ▶ Roadway reconstruction
- ▶ Project Limits:
 - ▶ Basswood Circle, Court
 - ▶ Silverwillow Drive



CURRENT PHASE II

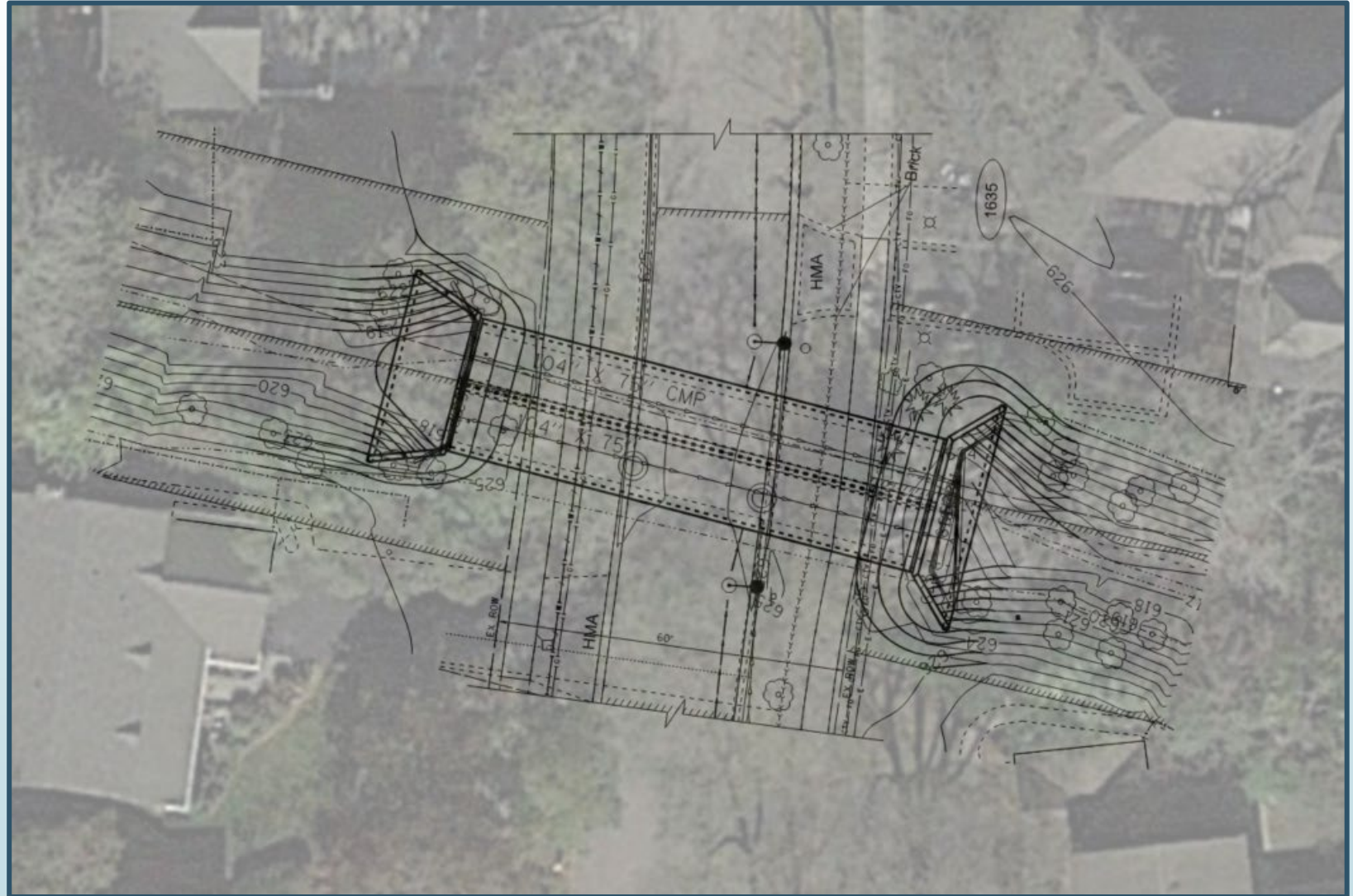
2023 Design / 2024-25 Construction

- ▶ **BLUE** 2024 construction / **GREEN** 2025 construction
 - ▶ Storm sewer improvements ranging from 12" through 48" diameter pipe
 - ▶ 8" and 12" water main improvements with new services to b-box/property line
 - ▶ Sanitary sewer and service repairs
 - ▶ Box Culvert replacement
 - ▶ Roadway reconstruction
- ▶ Project Limits:
 - ▶ Sequoia, Tulip Tree, Alder
- ▶ All local funding



SEQUOIA TRAIL BOX CULVERT REPLACEMENT

- Dual 5'x 10' concrete box culverts
- Concrete headwalls and wingwalls with railing
- Small diameter trees and bush removal in streambank
- Native plantings at streambank to stabilize slope
- Work contained to ROW



Tentative Schedule – Village Project (Sequoia, Tulip Tree, Alder)

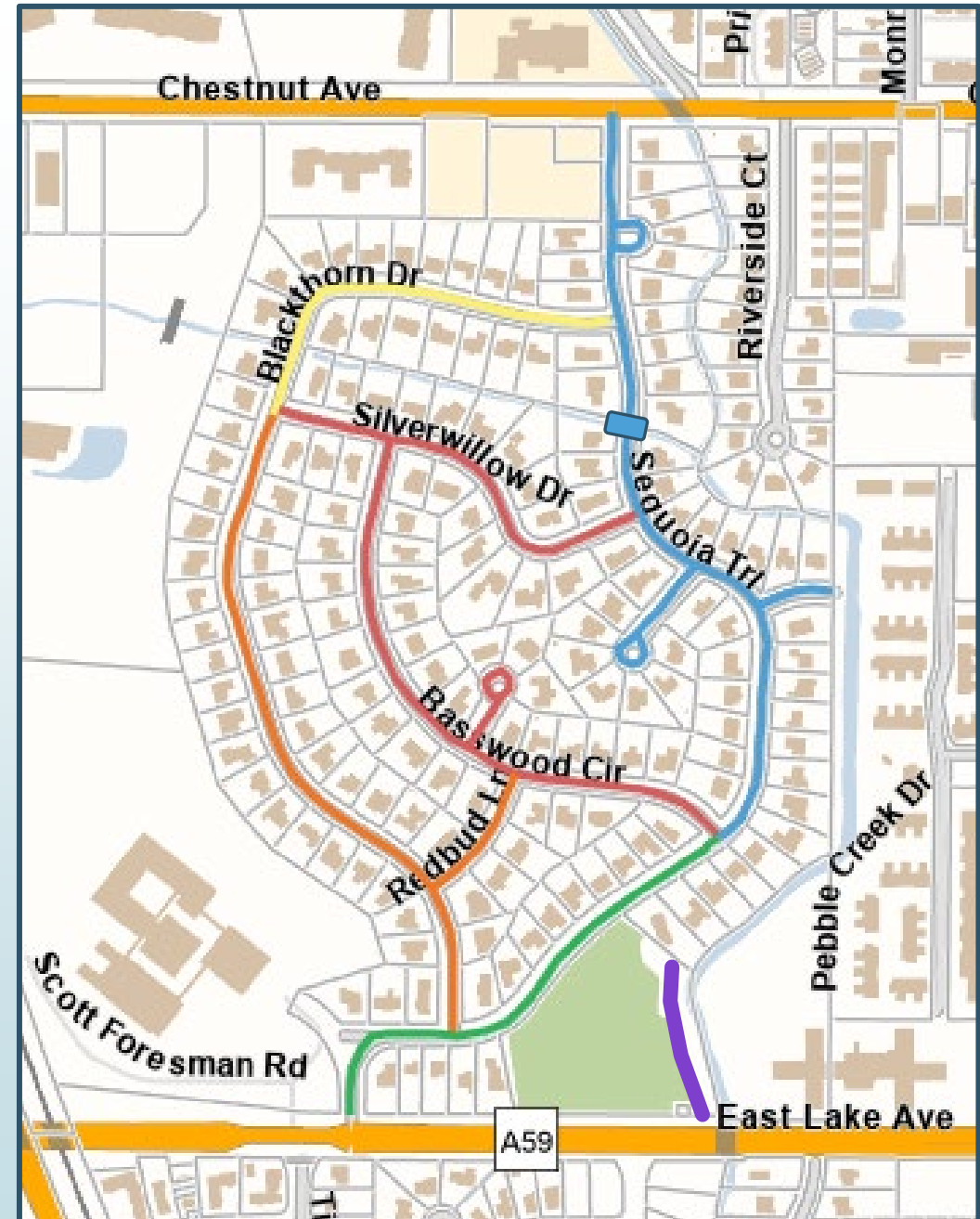
Date	Phase
December 4, 2023	Design Open House Meeting
February 2024	Finalize Design Plans and Bidding Process
February/March 2024	Contract Award
March/April 2024	Pre-Construction Resident Meeting
April/May 2024	Start of Construction*
October 2024	Interim Project Completion of Sequoia North of Basswood, Tulip Tree, and Alder
November 2024 – February 2025	Construction Pause for Winter
March/April 2025	Continue Construction on Sequoia South of Basswood
October 2025	Anticipated Full Project Completion

* Sequoia between Silverwillow and Blackthorn will be closed for approximately 1 month for box culvert replacement. Driveways directly adjacent to the box culvert will also be closed.

NEXT PHASE II

2024/2025

- ▶ Project Scope in **ORANGE**
 - ▶ Storm sewer improvements ranging from 12" through 36" diameter pipe
 - ▶ 8" and 12" water main improvements with new services to b-box/property line
 - ▶ Sanitary sewer and service repairs
 - ▶ Roadway reconstruction
- ▶ Project Limits
 - ▶ Blackthorn – Silverwillow to Sequoia Trail
 - ▶ Redbud – Basswood to Blackthorn
 - ▶ All work within public ROW
- ▶ Project supported by Army Corps of Engineers (ACE) Section 219 – Specific timing of project depends on ACE scheduling



Tentative Schedule –ACE Project (Blackthorn and Redbud) *

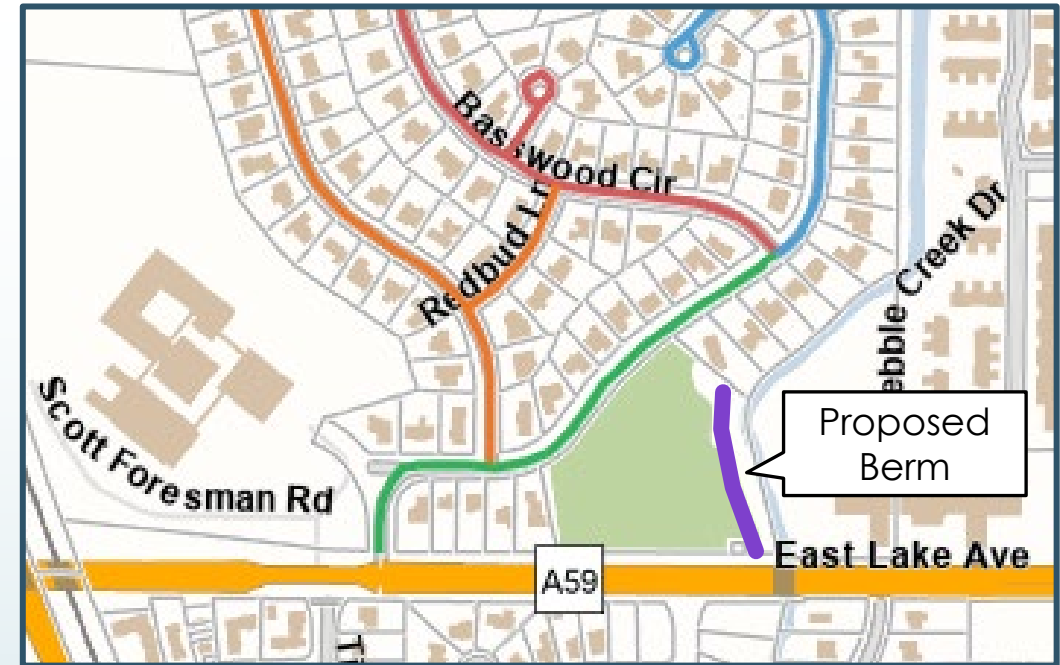
Date	Phase
Jan – July 2024	Design completed*
August/Sept 2024	Tentative Bidding (ACE)*
TBD	Contract Award (ACE)*
TBD	Pre-Construction Meeting *
TBD	Tentative Start of Construction *
2025	Anticipated Project Completion *

*** Project managed by Army Corps of Engineers (ACE) Section 219 – Specific timing of project depends on ACE schedule and process.**

FUTURE PHASE III

2026 -2028 Design and Construction

- ▶ Project Scope in **PURPLE**
 - ▶ 49.7 ac-ft compensatory storage in Techny Basin
 - ▶ Berm in Tall Trees Park
- ▶ Project Areas:
 - ▶ Techny Basin
 - ▶ Tall Trees Park
- ▶ Park District/MWRD/IDNR Coordination
- ▶ Seeking funding through MWRD/ACE





Overall Project Benefits

Upon Completion of All Phases

- Elimination of 10-year street flooding south of South Navy Ditch
- Reduced 100-year street flooding by 1 - 1.5 feet
- Provide emergency vehicle access throughout neighborhood
- Up to 30 structures protected from 100-year flooding
- New water main system
- Upgraded sanitary sewer system
- New reconstructed asphalt pavement



Logistics

- ▶ Construction Equipment Access – Crane (Phase II)
- ▶ Tree Root Pruning and Potential Removal near Culvert
- ▶ Bus Access and Coordination with School District
 - ▶ School District Notified and pick up location adjusted if needed
- ▶ Pedestrian Access
- ▶ Access During construction and overnight parking

Resident FAQ's

If my driveway is damaged, will it be fixed or replaced?

- Sections of private driveways in public right-of-way will be replaced if damaged during construction with the exception of edging materials and brick paver driveways. Reimbursement is available for reinstallation of brick pavers with the driveway apron located in the public right-of-way or brick paver driveway aprons can be replaced with concrete or asphalt aprons as part of the project.

Will my driveway be closed during construction?

- Private drives will be accessible the majority of the time during construction, but access will be limited during construction of the box culvert. If your driveway needs to be closed, notice will be provided to allow adequate time to make arrangements.

Will the parkway be restored after construction is completed?

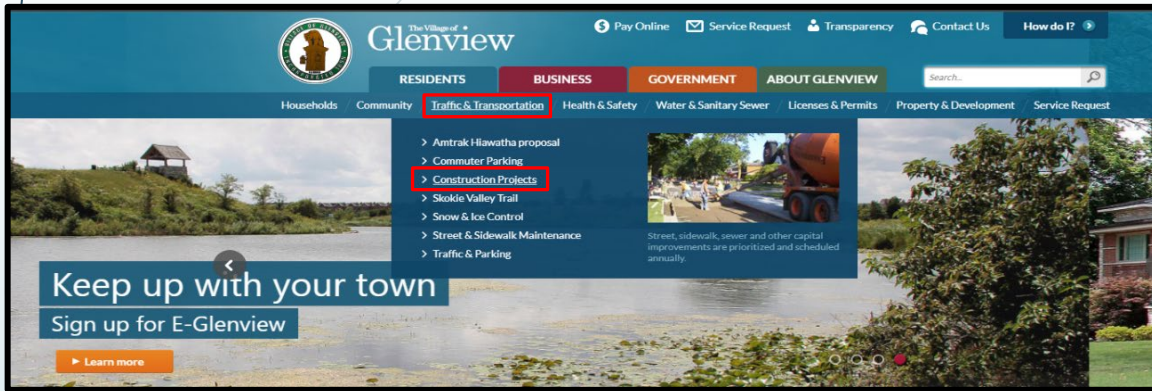
- Parkway areas disturbed by construction will be restored with sod during the last stage of construction. Please note that residents are responsible for the removal of private items located within parkway such as landscaping features, fencing, boulders, sprinklers, planters, etc. These items will not be replaced if damaged.

Will garbage pick up or bus pick up & drop off be impacted?

- The garbage service in your neighborhood will not be impacted during construction.
- Before bus routes are impacted, the school, bus company, and residents will be notified in advance of any alternate bus pick up and drop off.

Project Updates

- Navigate to <https://www.glenview.il.us/Pages/Default.aspx>
- Select Traffic & Transportation > Construction Projects



- Project Website Information and updates will be available during pre-construction resident meeting
- Sign up to receive weekly updates at the link listed to the left
- Keep your eyes open for hand-delivered letters and door hangers throughout the project

- Scroll down to 2024 Public Improvements Project List and select Sequoia Trail Improvements
- Scroll down to Notification Signup and enter your information

Find all [project updates here](#).

To sign up for future notifications on this project, fill out the form below. We will email updates on this project when they are available.

First Name	<input type="text"/>
Last Name	<input type="text"/>
Email Address	<input type="text"/>
Confirm Email Address	<input type="text"/>
Street Number	<input type="text"/>
Street Name	<input type="text"/>
Phone number	<input type="text"/>
<input type="submit" value="Submit"/>	

Please click the submit button once. Submission time is based on connection speed. This form will update to confirm your information was submitted.



NEXT STEPS

- ▶ Final Design and Permitting of Project (Phase II) – in progress
 - ▶ **Neighborhood Design Meeting (Phase II) (Today)**
 - ▶ Neighborhood Pre-Construction Meeting prior to construction
 - ▶ Spring 2024 (Sequoia Trail north of Basswood)
 - ▶ TBD(ACE Project & Sequoia Trail south of Basswood)
- ▶ Phase II Outside Funding Coordination – Army Corps of Engineers (ACE) –Section 219
- ▶ **Questions and Feedback**

Contact Us

Engineering Division Manager

Adriana Webb

Email: awebb@glenview.il.us

Phone: (847) 904 – 4414

Construction Project Manager

Tim Schwister

Email: tschwister@glenview.il.us

Phone: (847) 904 – 4422

If you consider doing work on your private property, a permit is required for:

- New driveway
- Private drain and connection to public sewer

Get more information here:

<https://www.glenview.il.us/Pages/Building-Permits.aspx>