

Prospect Heights, IL

BENCHMARK LOCATION

MILWAUKEE AVENUE; PALATINE ROAD



The Village of
Glenview



Benchmark Station Number: 13

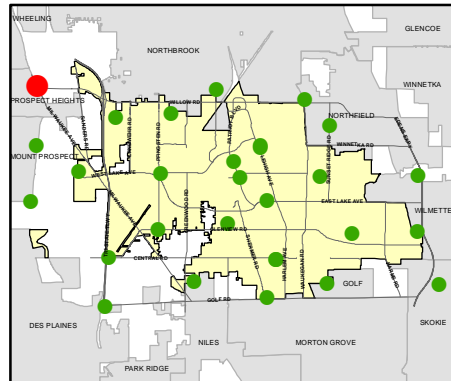
Easting: 1104344.199

Northing: 1982998.923

Elevation: 640.5

Description:

A #5 rebar and cap, 0.1' below ground, in the median of Milwaukee Avenue, about 230' N of the intersection with Palatine Road (Prospect Heights). 20.08' NE-ly of the point of a "T" on the top of a drop inlet, 11.84' ENE-ly of a "+" cut on the top of curb. 13.31' WSW-ly of a "+" cut on the top of curb, and 107.46' NNW-ly of a "+" of a cut on the E side of the concrete base to a street light.



Benchmarks



1 in = 50 ft



Northbrook, IL

BENCHMARK LOCATION



The Village of
Glenview

SHERMER ROAD; VALENCIA DRIVE; RAYMOND DRIVE; WILLOW ROAD



Benchmark Station Number: 14

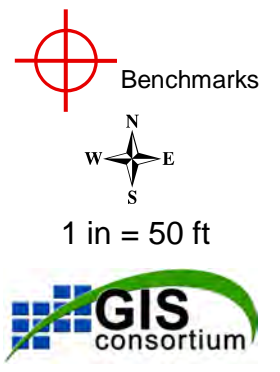
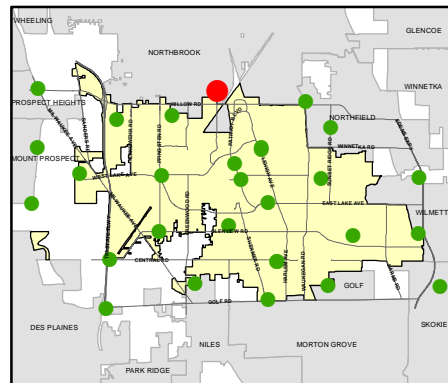
Easting: 1121040.199

Northing: 1982711.96

Elevation: 647.73

Description:

A "GPS" monument on the E side of Shermer Road, beyond the sidewalk, approximately 0.2 mi S of Raymond Drive, and just N of the entrance to Borden & Co. (Northbrook). 7.41' E-ly of the centerline of the sidewalk. 31.47' W-ly of a "+" cut in the N side of the concrete base to a sign, and 15.01' NW-ly of a "+" cut at the end of the straight curb on the N side of Borden's driveway.



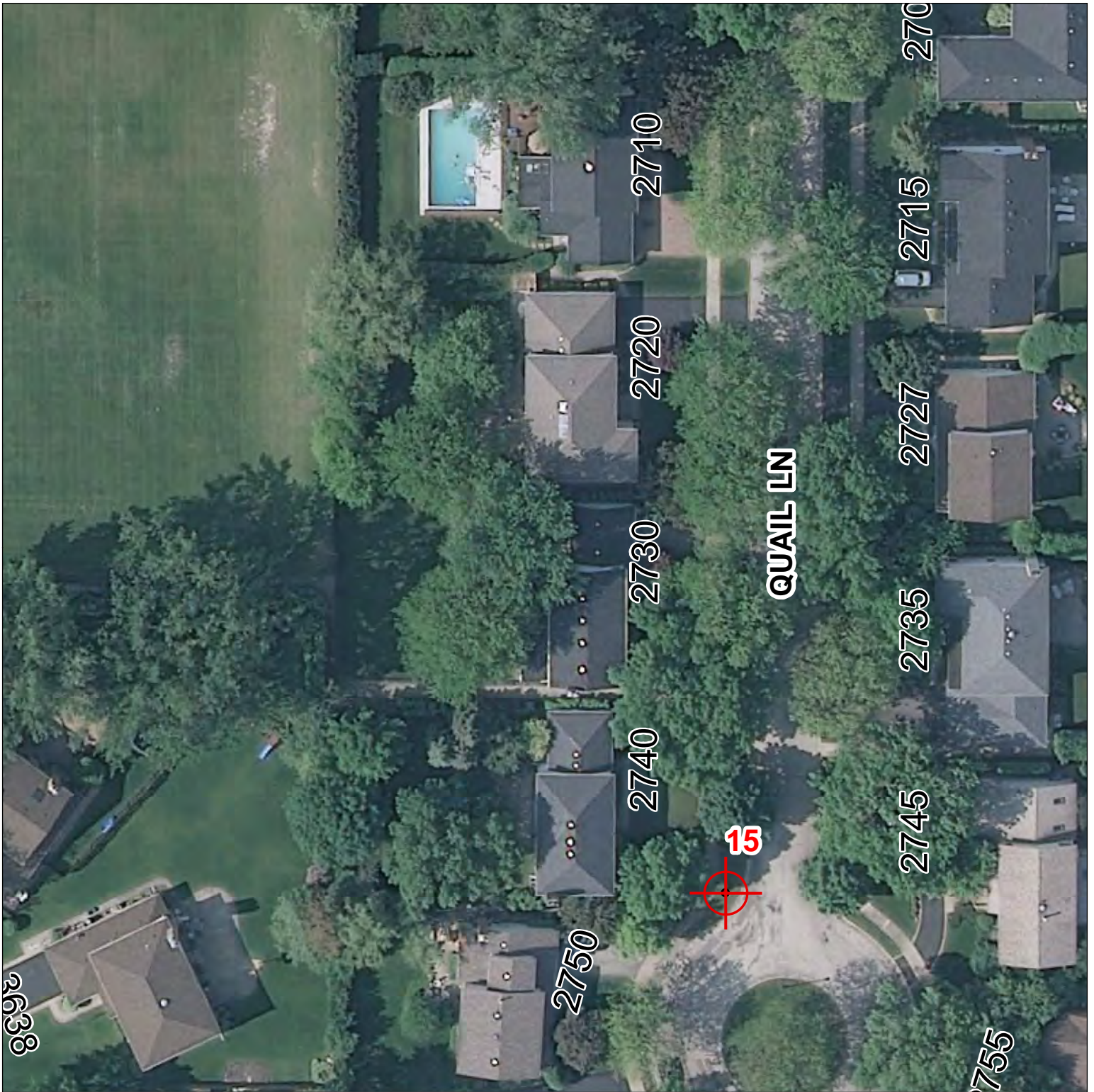
Northbrook, IL

BENCHMARK LOCATION



The Village of
Glenview

QUAIL LANE; BRIAN DRIVE; WILLOW ROAD; WESTFIELD LANE; ASTOR COURT



Benchmark Station Number: 15

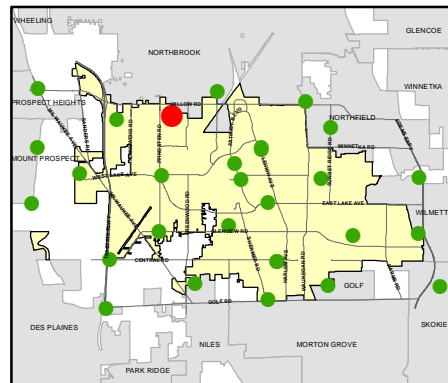
Easting: 1116810.063

Northing: 1980399.274

Elevation: 670.5

Description:

A "GPS" monument in the parkway of Quail Lane, between the sidewalk and the back of curb, N of the driveway to 2750 Quail Lane (Northbrook). 15.41' SW-ly of a "+" cut in the SE corner of a drop inlet, 14.55' E-ly of a "+" cut in the E rim of a manhole, 74.07' NW-ly of the top of the W nozzle of the hydrant on the S side of the island, and 25.90' NW-ly of a PK nail in the centerline of Quail Lane.



Benchmarks



1 in = 50 ft



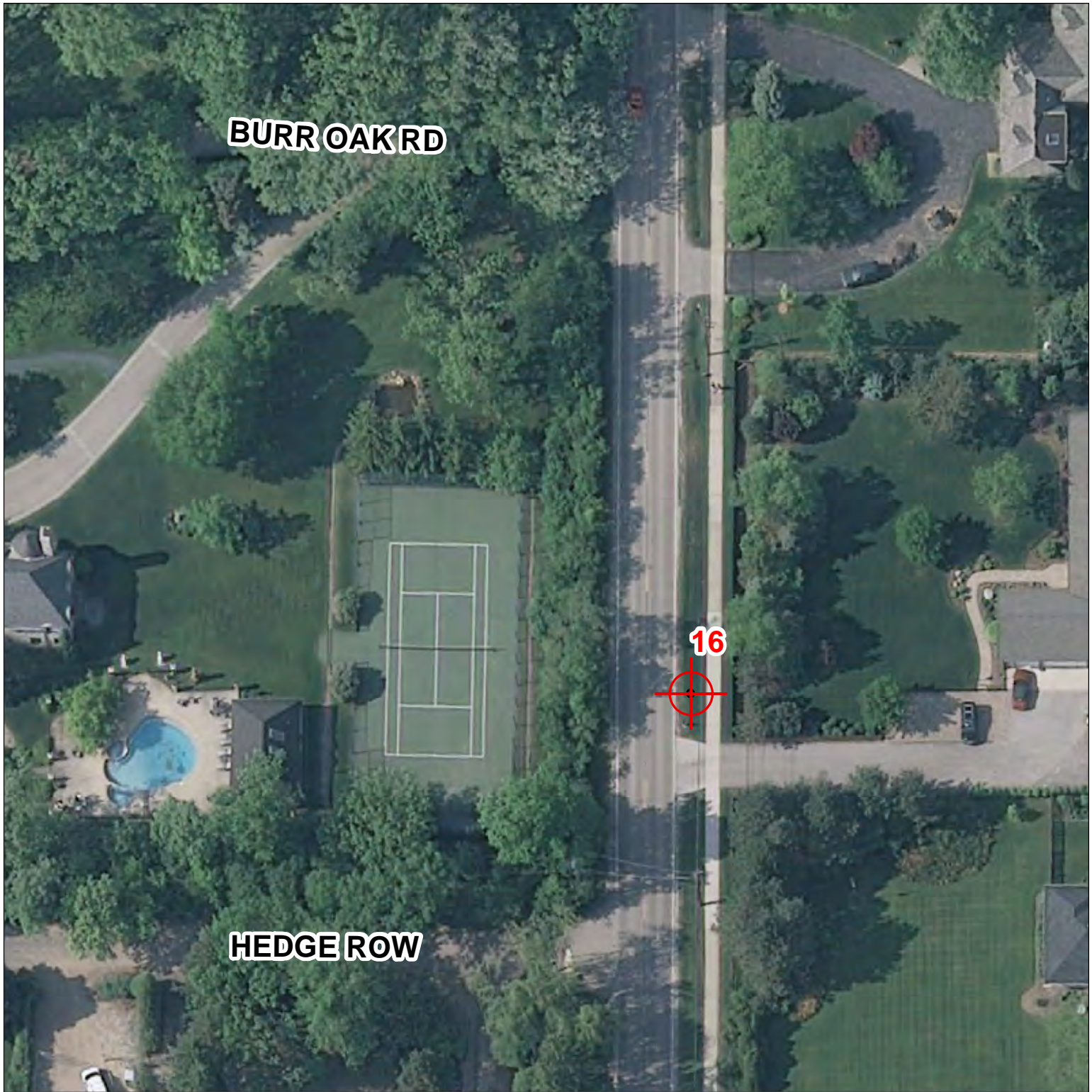
Northfield, IL

BENCHMARK LOCATION



The Village of
Glenview

SUNSET RIDGE ROAD; BURR OAK ROAD; HEDGE ROW; BIRCHWOOD LANE



Benchmark Station Number: 16

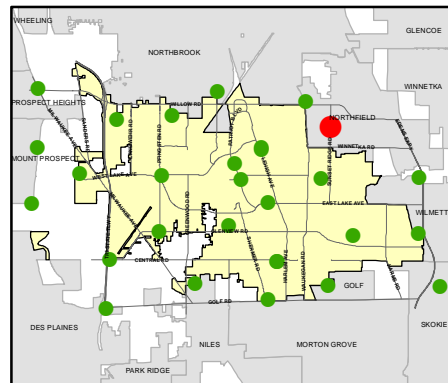
Easting: 1131627.497

Northing: 1979323.659

Elevation: 651.84

Description:

A #5 rebar and cap, O.I.' below ground, in the E parkway of Sunset Ridge Road, about 80' S of the centerline of the driveway for 291 Sunset Ridge, and about 5.5' S of Burr Oak Road (Northfield). 11 5.5' W-ly of the W edge of the sidewalk. 17.34' E-ly of a PK nail in the centerline of Sunset Ridge, 17.06' SW-ly of a boat spike in the W face of a power pole. and 77.98' N-ly of a DHN and Cap on the W face of a power pole.



Benchmarks



1 in = 50 ft



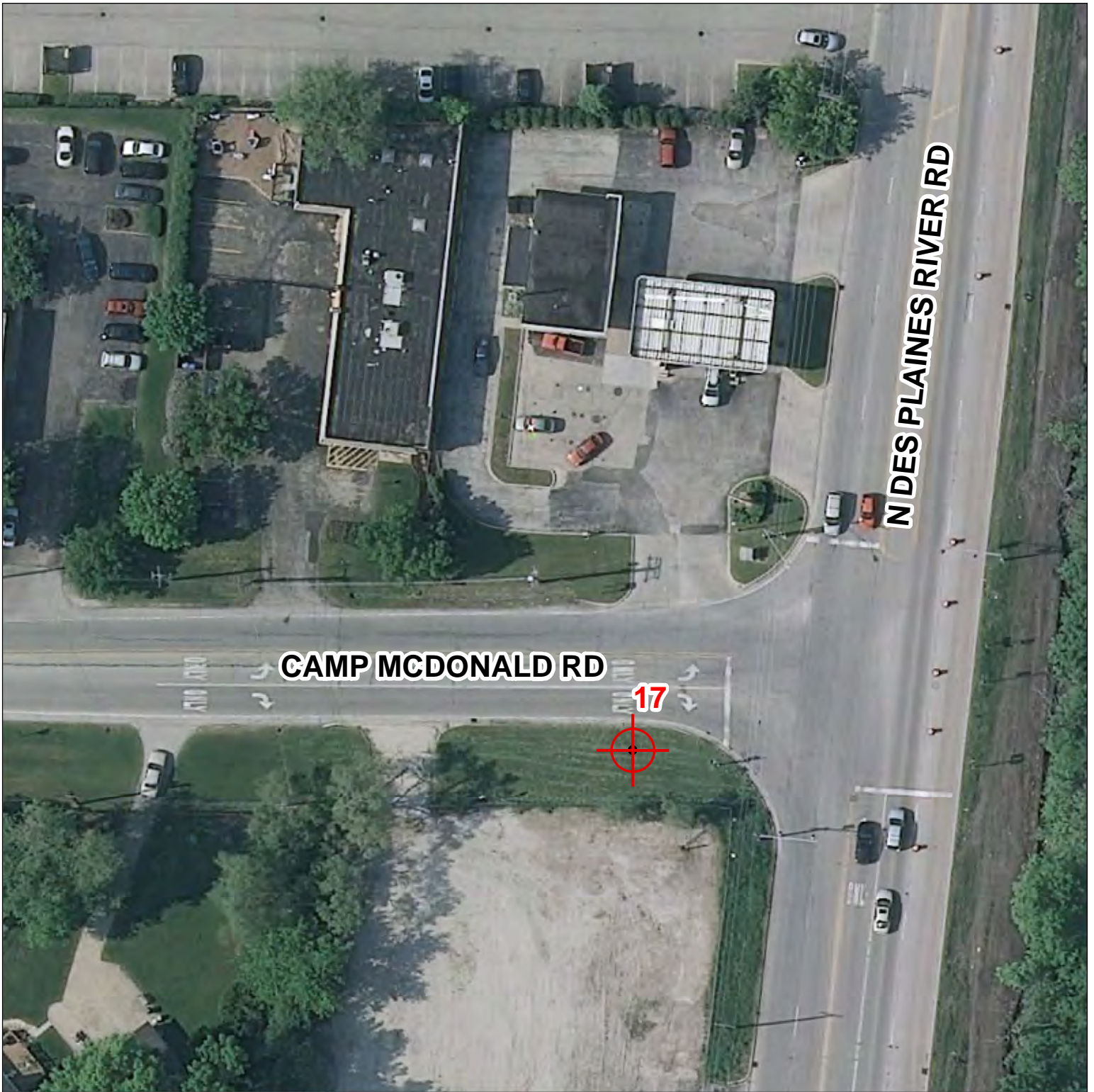
Mount Prospect, IL

BENCHMARK LOCATION



The Village of
Glenview

CAMP McDONALD ROAD; DES PLAINES RIVER ROAD



Benchmark Station Number: 17

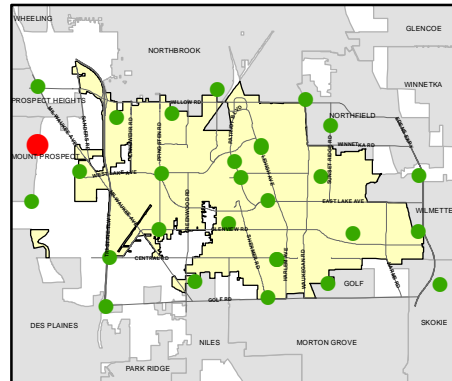
Easting: 1104260.216

Northing: 1977492.551

Elevation: 637.98

Description:

A #4 rebar and cap, 0.1' below ground, on the S parkway of Camp McDonald Road, just W of Des Plaines River Road (Mount Prospect). Station is #4 rebar and cap. 8.2' S-ly of the back of curb, 108.15' NW-ly of a DHN and Cap in the W face of a power pole, 57.72' ENE-ly of a "+" cut in the N side of a concrete base to a light, and 31.47' WSW-ly. of a "+" cut in the N side of the concrete base to a traffic light.

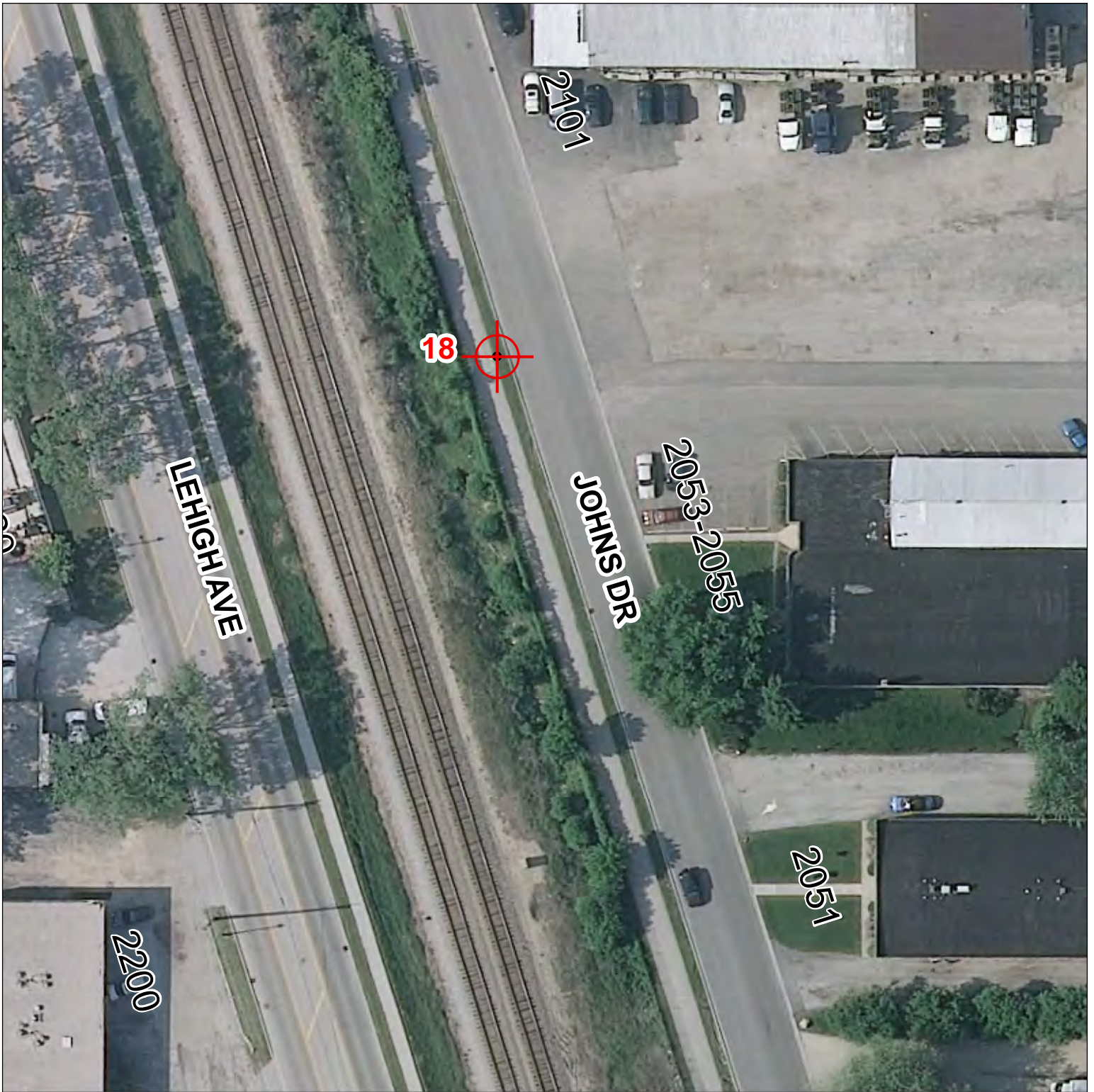


Benchmarks



1 in = 50 ft





Benchmark Station Number: 18

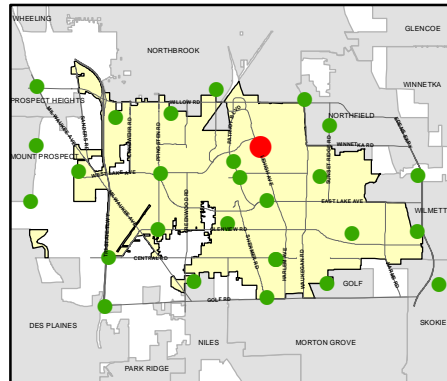
Easting: 1125189.347

Northing: 1977302.302

Elevation: 631.11

Description:

In Glenview, about 0.2 miles west and 200 feet south of the Northeast corner of Section 27 T42N R12E. About 0.6 miles North Northwest from the intersection of Johns Drive and Chestnut Avenue. The station is a "GPS" monument with the access cover flush with the ground.

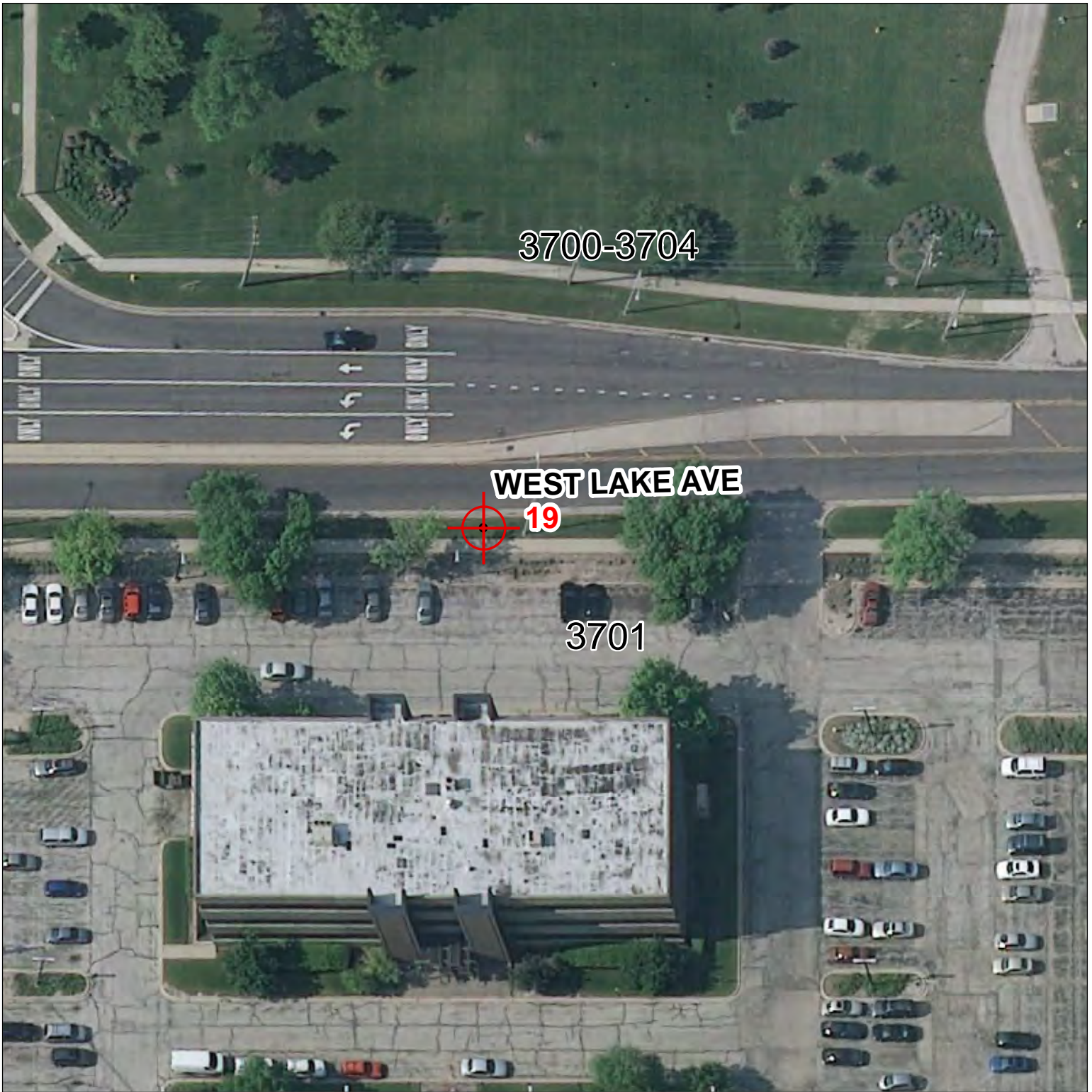


1 in = 50 ft





WEST LAKE AVENUE; EAST LAKE AVENUE; PFINGSTEN ROAD; LAFONTAINE DRIVE; JOY DRIVE



Benchmark Station Number: 19

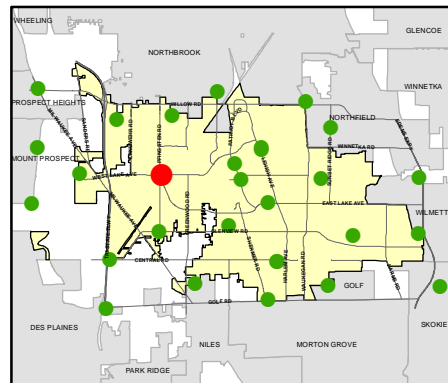
Easting: 1115885.409

Northing: 1974841.208

Elevation: 676.91

Description:

A "GPS" monument in the S parkway of West Lake Avenue, just E of Pfingsten Road (Glenview) 40.04' S-ly of a PK nail in the centerline of West Lake Avenue. 13.2' S-ly of the back of curb. 21.84' NE-ly of a "+" cut in the N side of the concrete base to a parking lot light, 4.05' N-ly of a "+" cut on the N edge of the sidewalk, and 76.05' W-ly of a "+" cut on the W rim of a manhole.

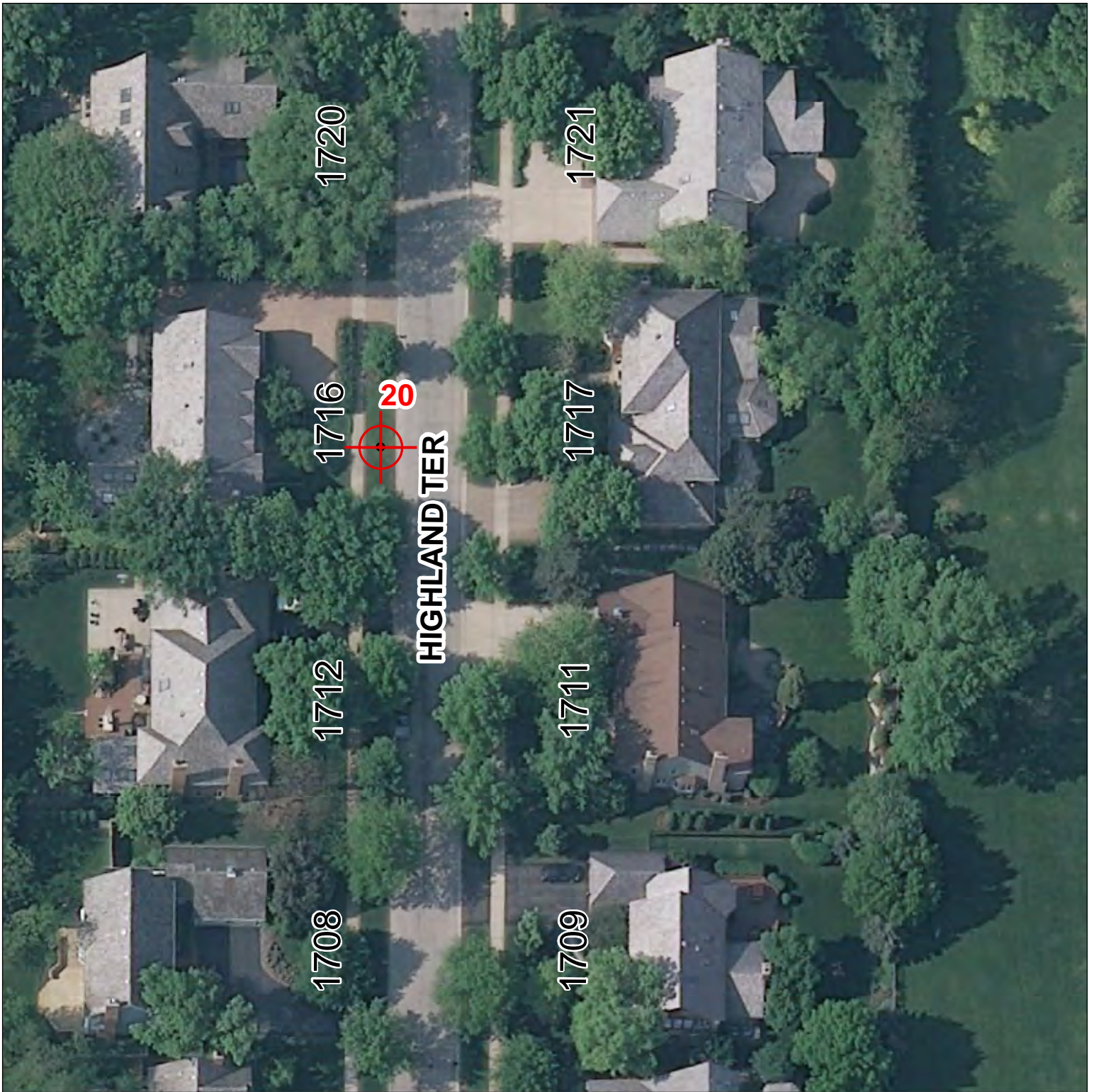


Benchmarks



1 in = 50 ft





Benchmark Station Number: 20

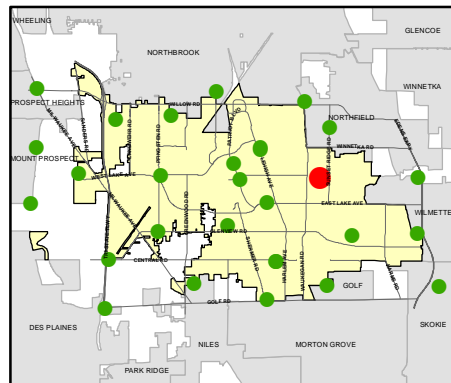
Easting: 1130748.067

Northing: 1974627.274

Elevation: 654.38

Description:

A "GPS" monument in the W parkway of Highland Terrace, between 1712 and 1716 Highland Terrace and about 200' S of Kenilworth Avenue (Glenview). 16.77' W-ly of a PK nail in the centerline of Highland Terrace, 55.61' SW-ly of a PK nail at the centerlines of Highland Terrace and the driveway of 1716 Highland Terrace, and 40.72' NNW-ly of a "+" cut in the E rim of a round drop inlet.

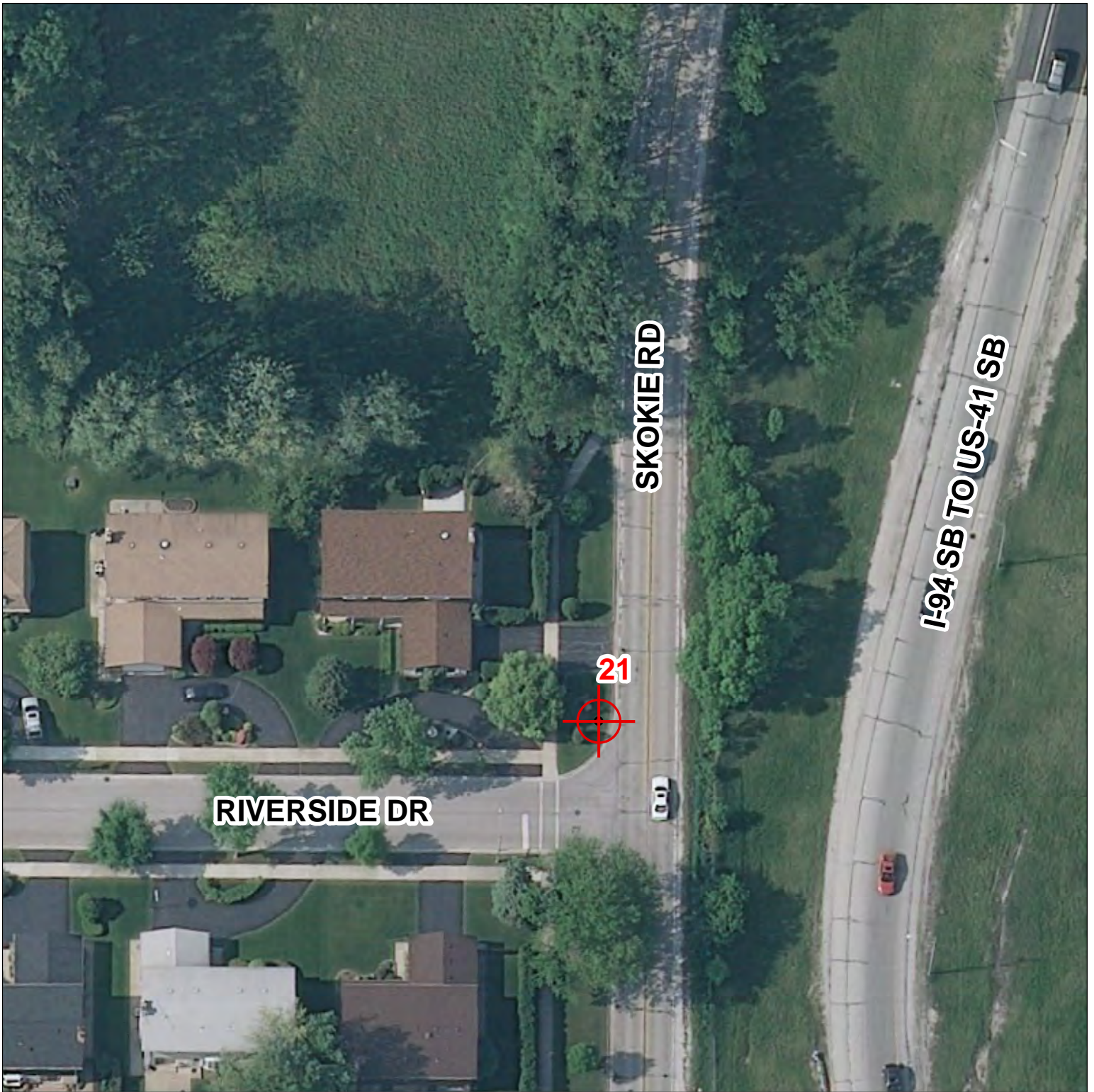


1 in = 50 ft





RIVERSIDE DRIVE; WEST FRONTAGE ROAD; SKOKIE ROAD; EDENS EXPRESSWAY



Benchmark Station Number: 21

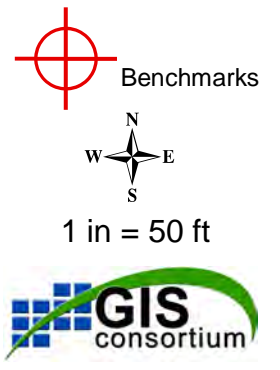
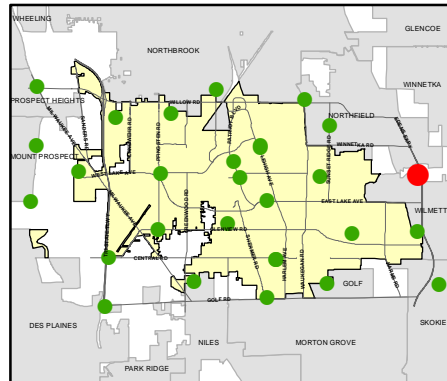
Easting: 1139862.563

Northing: 1974648.39

Elevation: 627.04

Description:

A #4 rebar and cap, 0.1' below ground, in the W parkway of the W Frontage Road (also known as Skokie Road), just N of Riverside Drive (Wilmette). 35.32' N-ly of a "+" cut in the W rim of a manhole in Riverside Drive, 38.37' NW-ly of a PK nail at the centerlines of Riverside Drive and Skokie Road, and 17.45' W-ly of a PK nail in the centerline of Skokie Road (34,32' N-ly of the centerline of Riverside Drive).





KENSINGTON FOUNDRY ROAD; DES PLAINES RIVER ROAD



Benchmark Station Number: 22

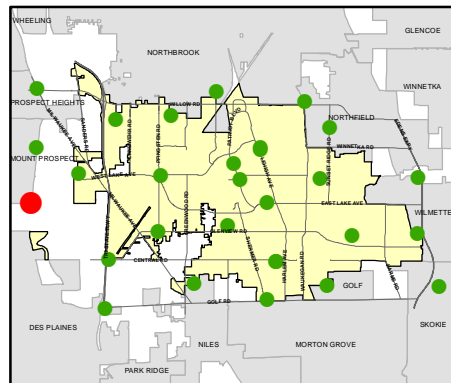
Easting: 1103732.494

Northing: 1972199.146

Elevation: 638.12

Description:

A #4 rebar and cap, 0.1' below ground, in the S parkway of Kensington Foundry Road (Unincorporated Cook County). 4.24' S-ly of a "+" cut in the top of the curb, 10.82' SW-ly of a "+" cut on the N rim of a drop inlet, 90.41' W-ly of a DHN and Cap in the N face of a power pole at the intersection with Des Plaines River Road, and 61.51' ENE-ly of a DHN and Cap in the N face of a power pole.



Benchmarks

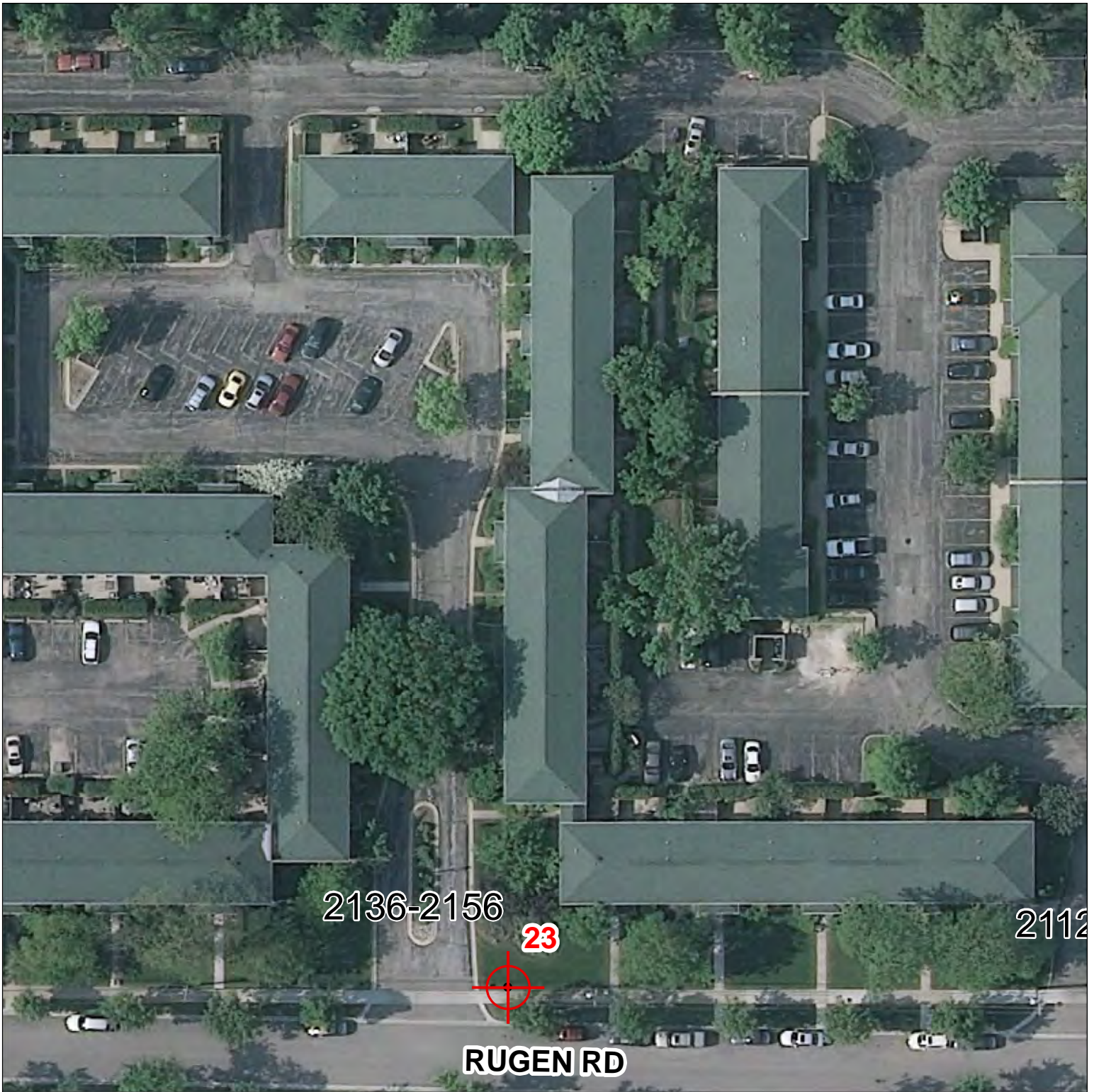


1 in = 50 ft





RUGEN ROAD; LEHIGH AVENUE; EAST LAKE AVENUE



Benchmark Station Number: 23

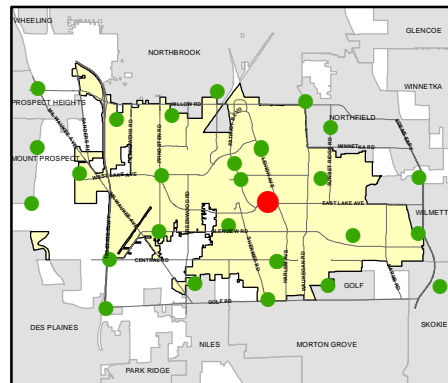
Easting: 1125799.025

Northing: 1972322.555

Elevation: 635.51

Description:

A "GPS" monument on the N side of Rugen Road, SW-ly of 2134D Rugen Road. (Glenview) 1.1' N-ly of the N edge of the sidewalk, 26.5' N-ly of the centerline of Rugen Road, 7.39' E-ly of a "+" cut in the NNE flange bolt of a fire hydrant, 29.98' W-ly of a DHN and Cap to the S face of a power pole, and 27.60' SSE-ly of the sw corner of the bottom brick in the "Glenview Gardens" sign.



Benchmarks



1 in = 50 ft



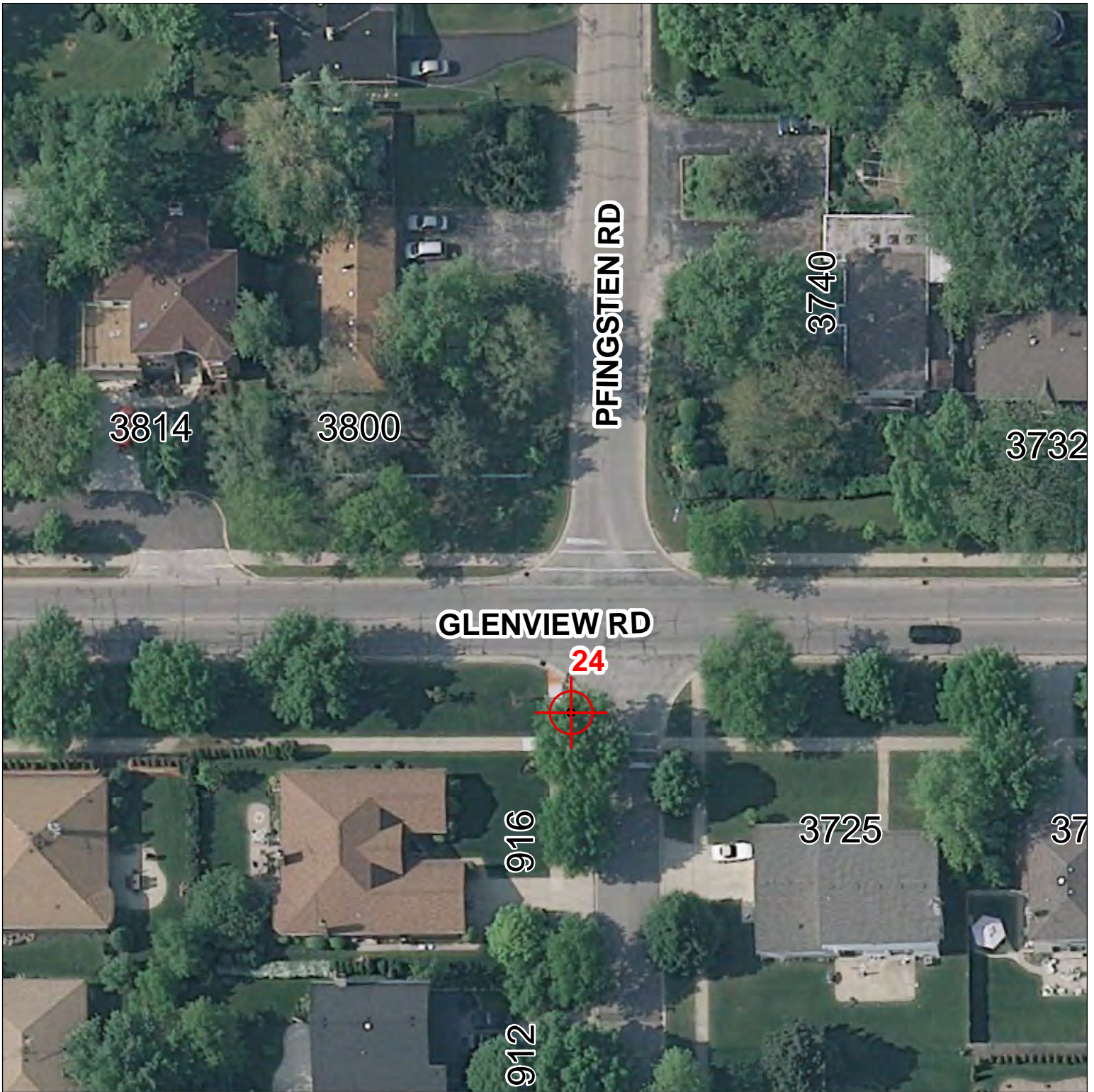
Glenview, IL

GLENVIEW ROAD; PFINGSTEN ROAD

BENCHMARK LOCATION



The Village of
Glenview



Benchmark Station Number: 24

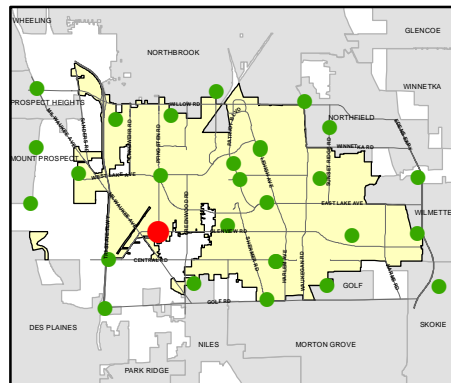
Easting: 1115656.588

Northing: 1969568.676

Elevation: 683.18

Description:

A "GPS" monument in the parkway at the SW corner of Glenview and Pfingsten Roads. (Glenview) 10.43 S-ly of a "+" cut on the top of curb, 10.29' NW-ly of a "+" cut on the top of curb, and 16.57' WSW-ly of a "+" cut on the N rim of a manhole.



Benchmarks



1 in = 50 ft



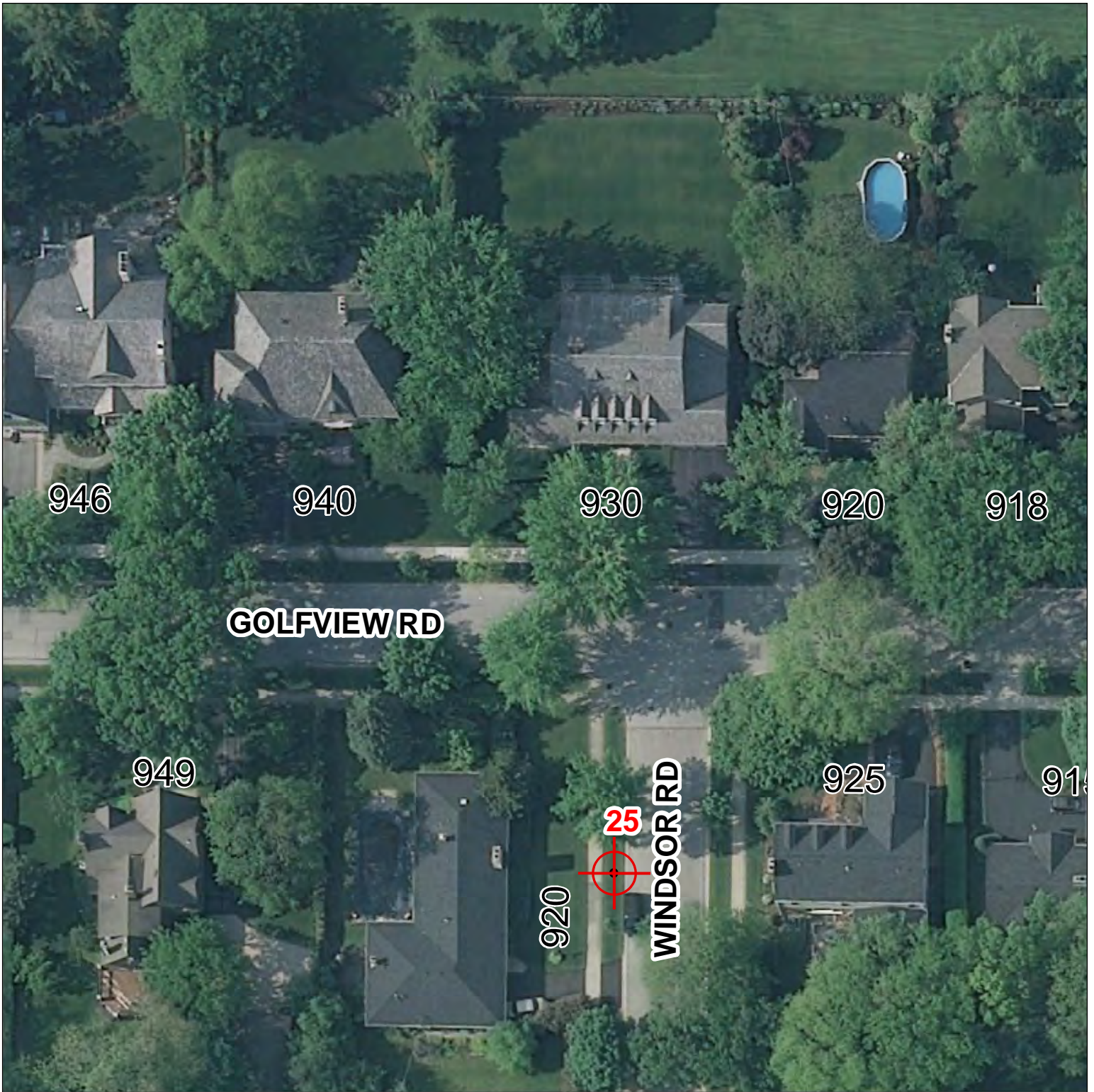
Glenview, IL

BENCHMARK LOCATION



The Village of
Glenview

GOLFVIEW ROAD; WINDSOR ROAD; WAGNER ROAD; GLENVIEW ROAD



Benchmark Station Number: 25

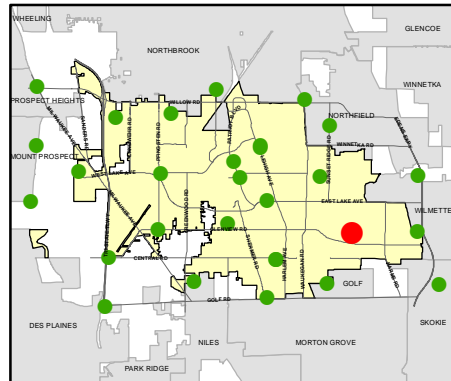
Easting: 1133758.307

Northing: 1969248.594

Elevation: 637.13

Description:

A "GPS" monument in the parkway of Windsor Road, just S of Golfview Road. (Glenview) 19.11' W-ly of a PK nail in the centerline of Windsor Road, 45.48' NW-ly of a PK nail in the centerlines of Windsor Road and the driveway to 920 Windsor Road, 73.72' SSE-ly of a "+" cut on the E flange bolt of a fire hydrant on the S side of Golfview Road, and 92.25' SSW-ly of a "+" cut on the S rim of a manhole at the centerlines of Windsor and Golfview Roads.



1 in = 50 ft



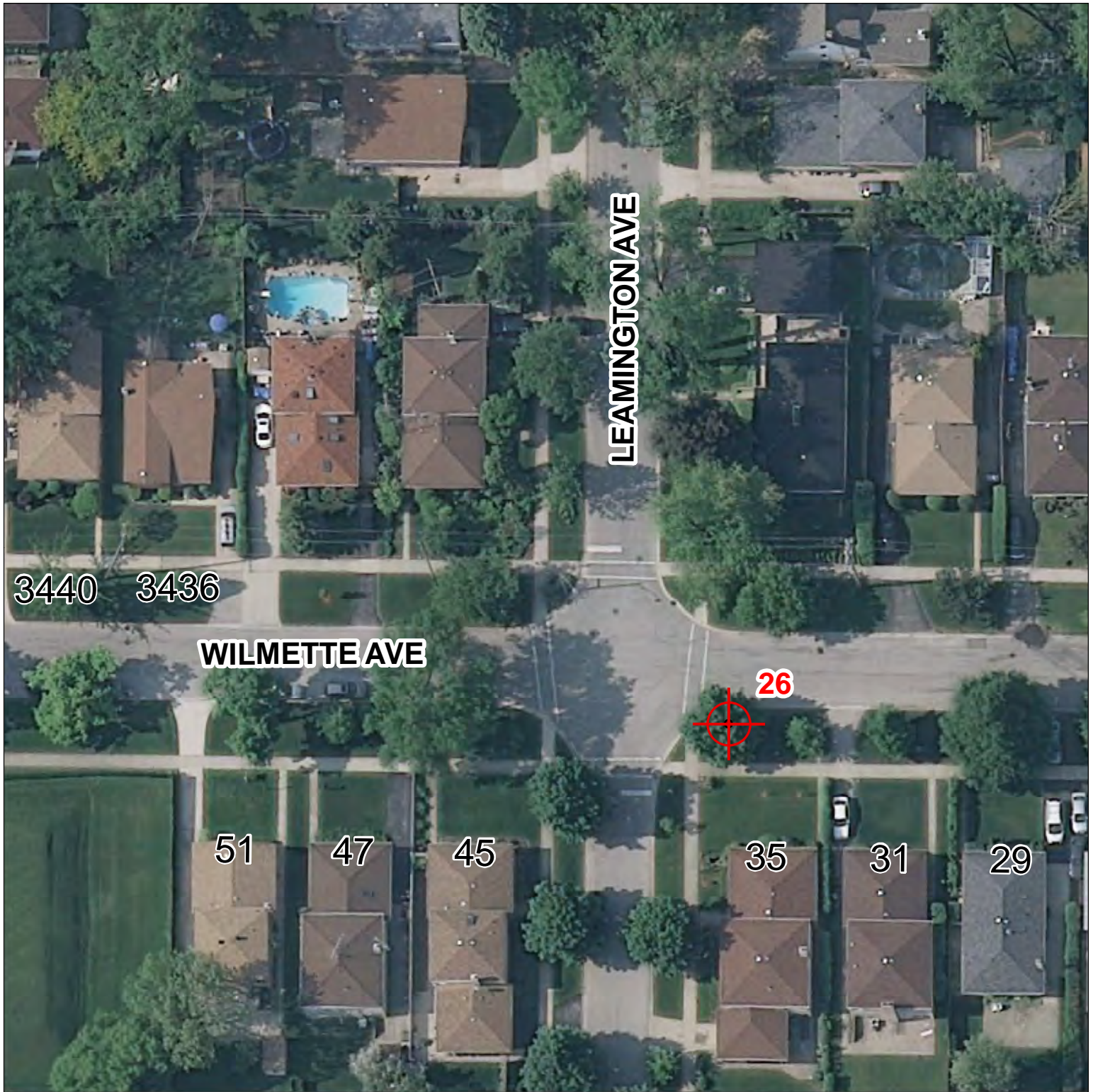
Wilmette , IL

BENCHMARK LOCATION



The Village of
Glenview

WILMETTE AVENUE; LEAMINGTON AVENUE; EDENS EXPRESSWAY; GLENVIEW ROAD; LARAMIE AVENUE



Benchmark Station Number: 26

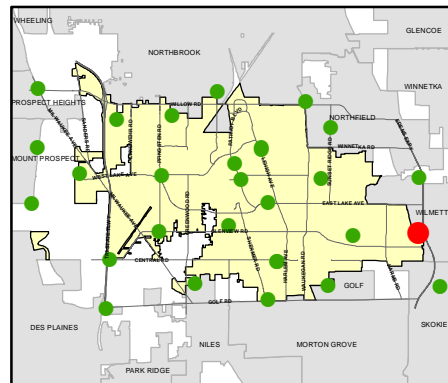
Easting: 1139840.197

Northing: 1969442.774

Elevation: 623.63

Description:

A "GPS" monument in the S parkway of Wilmette Avenue, just E of Leamington Avenue. (Glenview) 46.22' SE-ly of a PK nail at the centerlines of Wilmette and Leamington Avenues, 33.11' NE-ly of a "+" cut in the E flange bolt of a hydrant on the E side of Leamington and 73.45' SW-ly of a DHN and Cap in the SE face of power pole #4996.



Benchmarks



1 in = 50 ft





CENTRAL AVENUE; TRI-STATE TOLLWAY; DEARLONE ROAD; CHICAGO AND NORTHWESTERN RR



Benchmark Station Number: 27

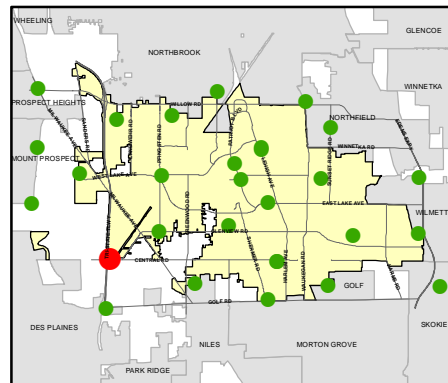
Easting: 1111037.64

Northing: 1967013.635

Elevation: 638

Description:

A "GPS" monument on the N side of Central, just W of the entrance to "Zenith Co." (Glenview) 64' N-ly of the centerline of Central Avenue, 70' W-ly of the centerline of Zenith's entrance, 13.86' SW-ly of a "+" cut on the 4th steel post (counting E to W), 15.21' SE-ly of a "+" cut on the 5th steel post, and 32.81' WSW-ly and 31.72' WNW-ly of a "+" cut on the NW and SW corners of the concrete base of the Zenith Sign.

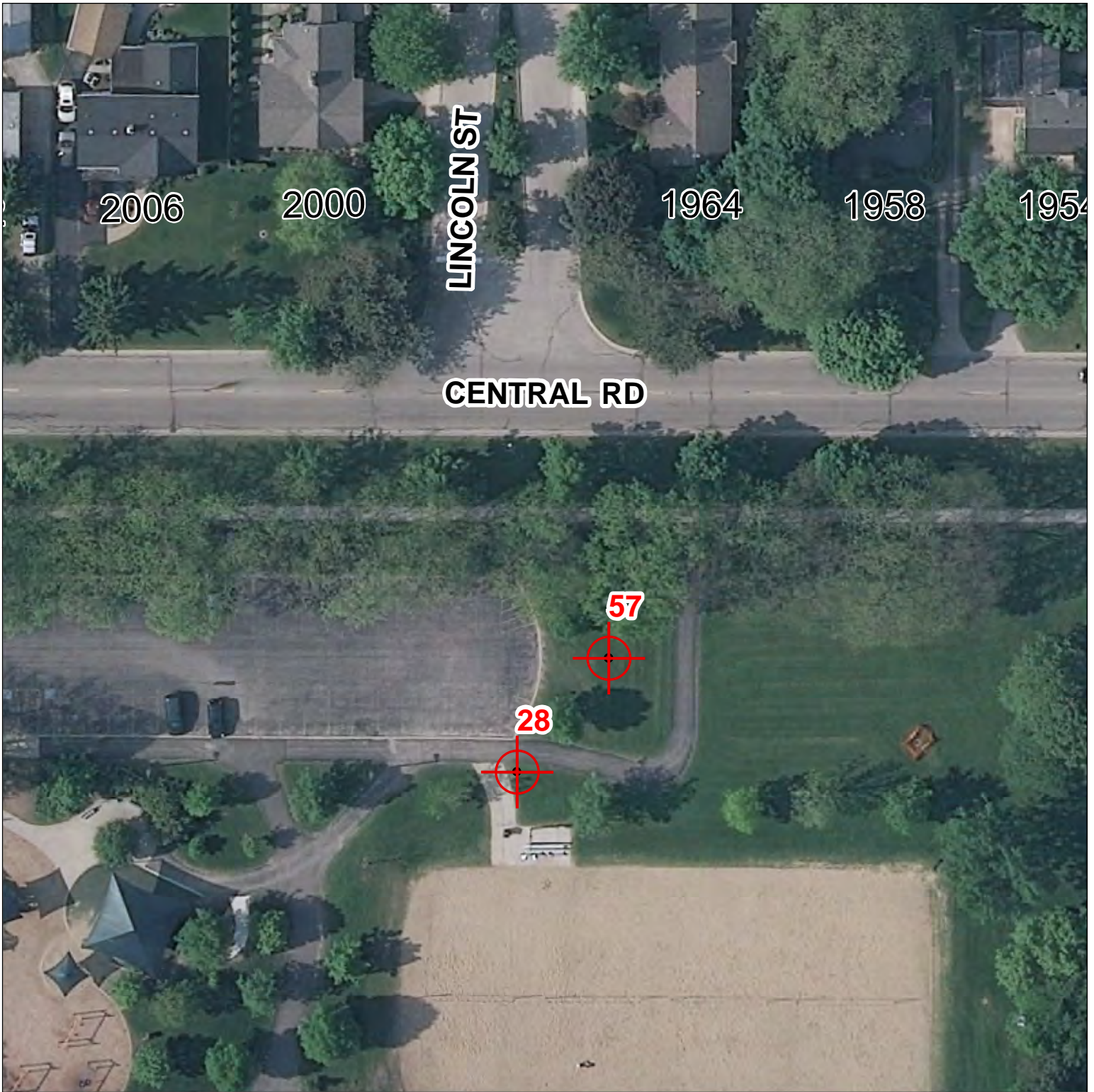


Benchmarks



1 in = 50 ft





Benchmark Station Number: 28

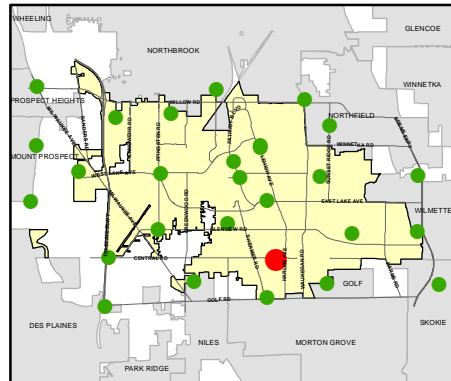
Easting: 1126655.381

Northing: 1966796.49

Elevation: 637.67

Description:

In Glenview, about 800 feet W of the NE corner of Section 12, T41N, R12E, located in Johns Park, opposite Lincoln St, about 200 feet from the park entrance. The station is a "gas" monument with the access cover flush with the ground.



Benchmarks



1 in = 50 ft



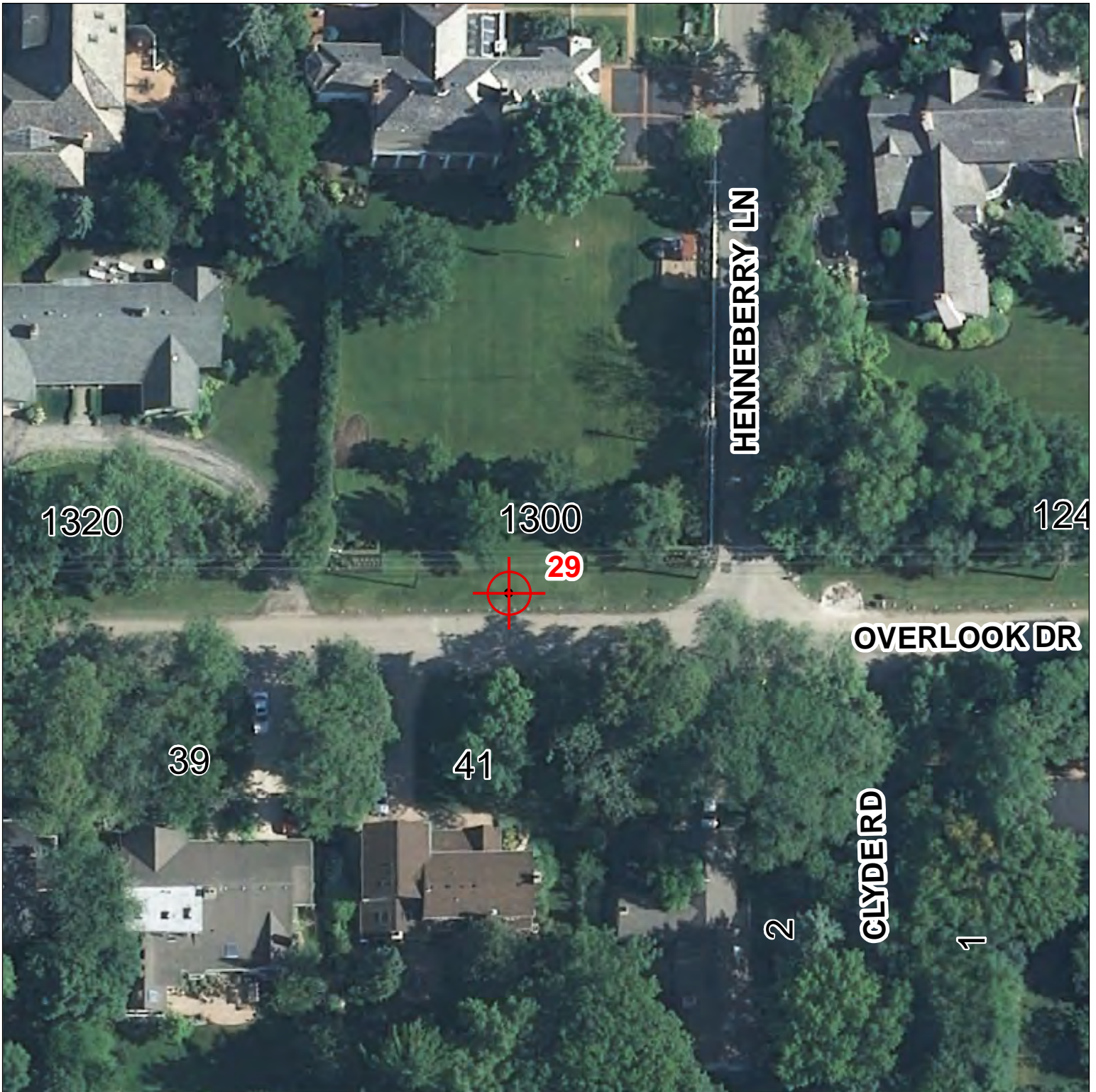
Glenview, IL

BENCHMARK LOCATION



The Village of
Glenview

OVERLOOK DRIVE; CLYDE STREET; HENNEBERRY LANE



Benchmark Station Number: 29

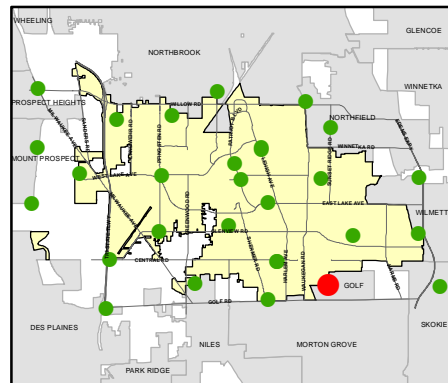
Easting: 1131404.095

Northing: 1964547.475

Elevation: 636.55

Description:

A "GPS" monument in the N parkway of Overlook Drive, just W of the intersection with "Henneberry Lane. (Glenview) 16.59' N-ly of a PK nail in the centerline of Overlook Drive, 68.57' W-ly of" a RR spike in the S face of power pole #9936, and 35.41' ESE-ly of a DHN and Cap to the S face of a power pole.



Benchmarks



1 in = 50 ft





LAWLER AVENUE; GOLF ROAD; OLD ORCHARD ROAD; EDENS EXPRESSWAY



Benchmark Station Number: 30

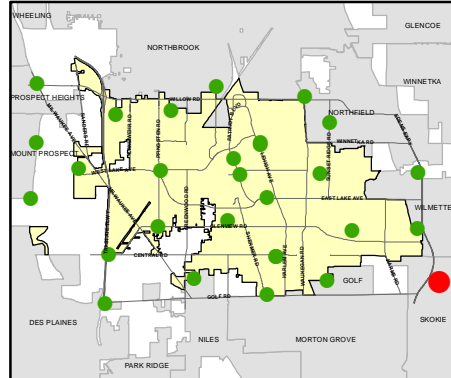
Easting: 1141869.832

Northing: 1964427.128

Elevation: 620.83

Description:

A #5 rebar and cap, 0.1' below ground, in the W parkway of Lawler Avenue, just N of the S driveway to Niles North High School. (Skokie) 24.88' N-ly of a PK nail in the centerline of the school's driveway, 41.96' NW-ly of a PK nail at the centerlines of the school's driveway at the end of a straight section and the beginning of a curve.



Benchmarks



1 in = 50 ft





RONALD ROAD: GLENDALE ROAD; MILWAUKEE AVENUE; GOLF ROAD



Benchmark Station Number: 31

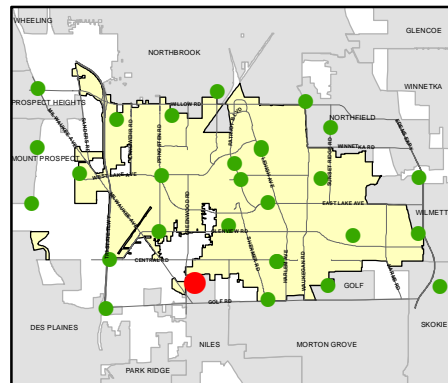
Easting: 1118984.488

Northing: 1964719.263

Elevation: 653.87

Description:

A "GPS" monument on the S side of Ronald Road, just W of the intersection with Glendale Road. (Unincorporated Cook County) 16.9' S-ly of the centerline of Ronald Road, 43.5' W-ly of the centerline of Glendale Road, 67.27' WNW-ly of a DHN and Cap in the S face of a on the N rim of a manhole, and 42.98' SW-ly of a "+" cut on the E rim of a drop inlet on the N side of Ronald Road.



Benchmarks



1 in = 50 ft





Benchmark Station Number: 32

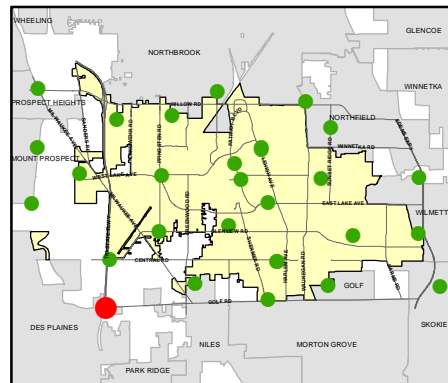
Easting: 1110646.286

Northing: 1962386.974

Elevation: 639.96

Description:

A #S rebar and cap, flush with the ground, on the S side of Gold, in the SE clover-leaf onto the Tri-State Tollway. (Unincorporated Cook County) 58.49' S-ly of a PK nail on the white line at the S edge of Gold Road, 68.65' SE-ly of a "+" cut at the E end of the curb (51.5' E-ly of the interstate overpass), and 131.92' SW-ly of a "+" cut 3' above ground on the NW face of a light pole at the on-ramp to north-bound I-294.



1 in = 50 ft





Benchmark Station Number: 33

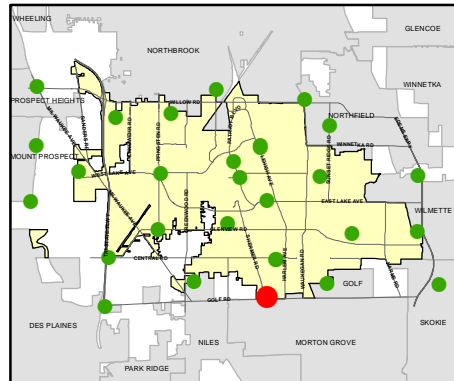
Easting: 1125780.084

Northing: 1963221.097

Elevation: 656.79

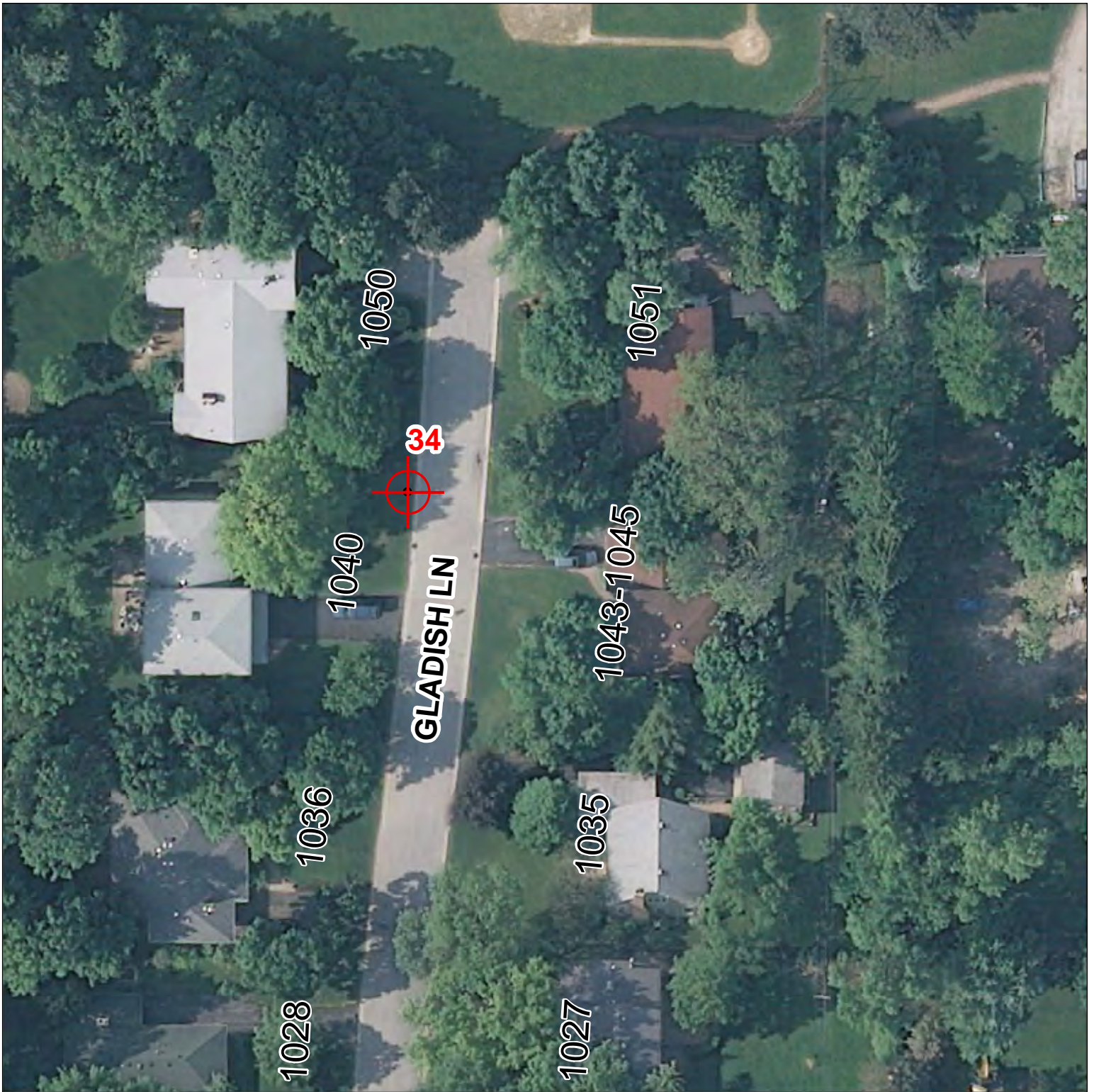
Description:

A "GPS" monument in the W parkway of Shermer Road, just N of the intersection with Golf Road. (Glenview) 23.76 ENE-ly of a "+" cut in the centerline of the sidewalk, 67.44' NE-ly of a DHN and Cap in the N face of a power pole on Golf Road, 48.10' N-ly from a "+" cut on the W corner of the concrete base of a traffic light, and 28.42' NNW-ly of a "+" cut on the N corner of the concrete base of a traffic light.



Benchmarks

1 in = 50 ft



Benchmark Station Number: 34

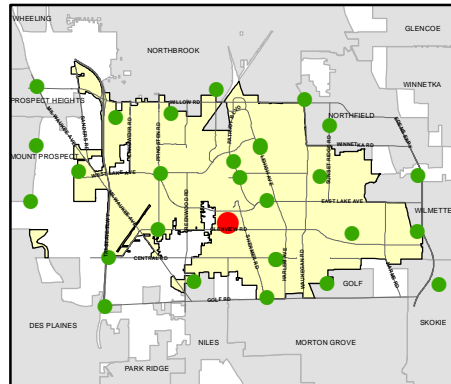
Easting: 1122124.239

Northing: 1970189.357

Elevation: 657.64

Description:

A "GPS" monument on the W side of Gladish Lane, about 800' N of Glenview Road. (Glenview) 15.00' W-ly of a PK nail in the centerline of Gladish Lane, 19.6S' NW-ly of a "+" cut on the W rim of a drop inlet manhole, and 104.89' S-ly of a "+" cut on the ESE flange bolt of a fire hydrant at the N end of Gladish Lane.



1 in = 50 ft





OSAGE DRIVE



Benchmark Station Number: 35

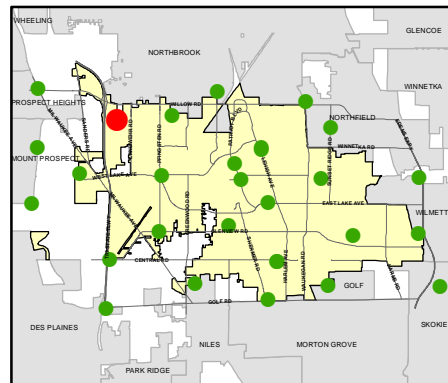
Easting: 1111709.863

Northing: 1980053.996

Elevation: 673.73

Description:

A "GPS" monument in the MorChern parkway of Osage Drive. Between the sidewalk and the back of curb, on a line extended north from the west edge of the driveway for Osage Drive. (Unincorporated Cook County) 20.86' N-ly of a PK nail in the centerline of Osage, 90.70' E-ly of a "+" cut in the N flange bolt of a fire hydrant, and 39.08' SE-ly of a "+" cut in the N rim of a drop inlet.



Benchmarks



1 in = 50 ft



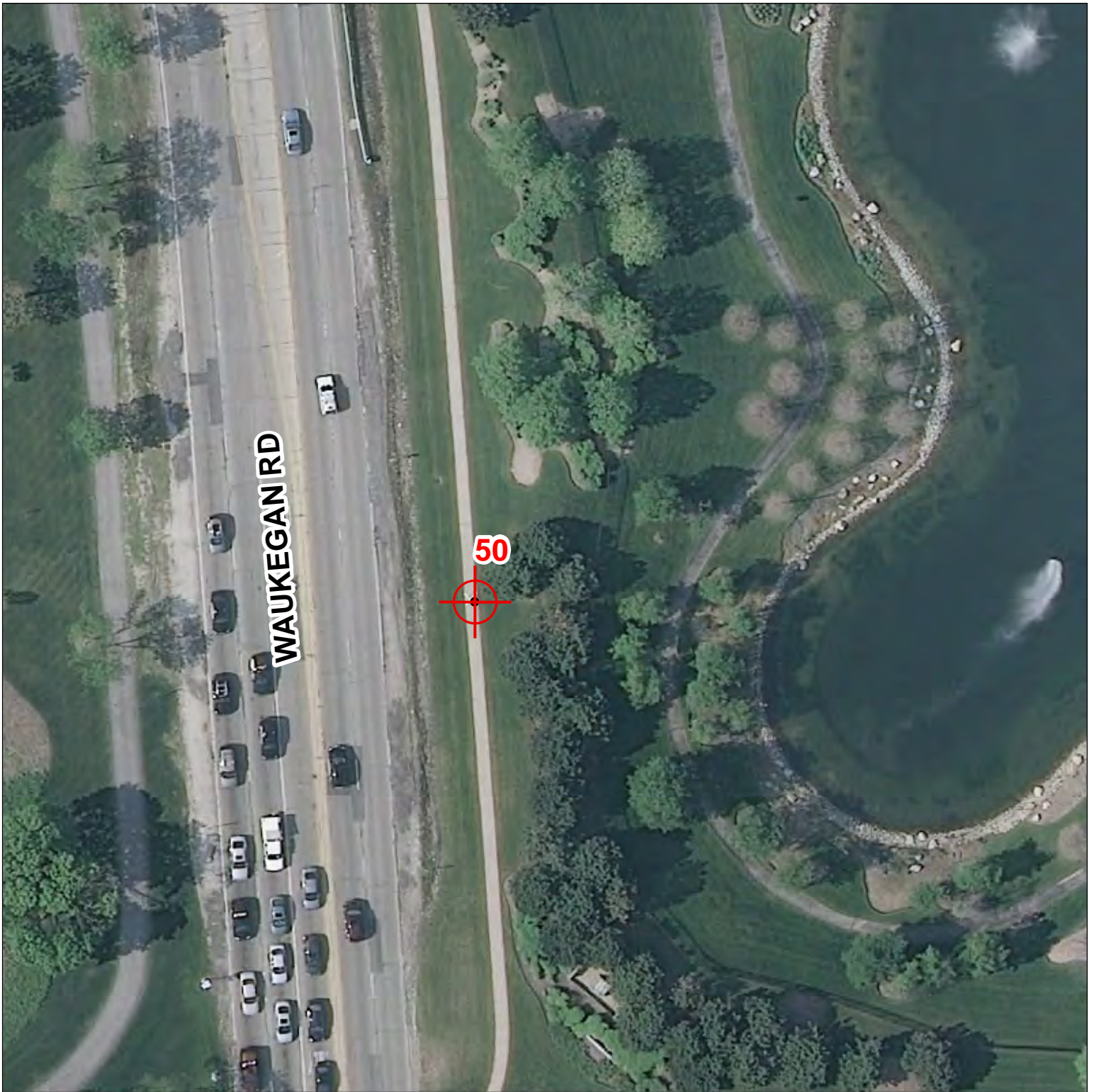
Northfield, IL

WILLOW ROAD; WAUKEGAN ROAD

BENCHMARK LOCATION



The Village of **Glenview**



Benchmark Station Number: 50

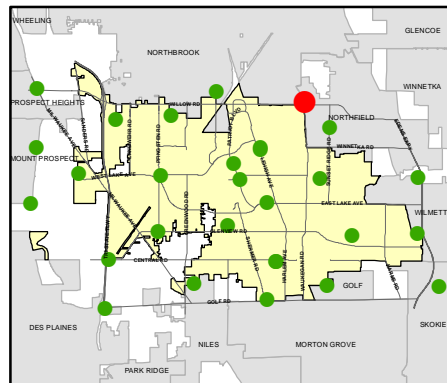
Easting: 1129303.092

Northing: 1981707.28

Elevation: 669.7

Description:

NGS "Glenview 2" as reset by IDOT 200' N and 50' E from NGS "Glenview 2" (Northfield) NGS "Glenview 2" is 170' E of the centerline of Waukegan Road and 249' N of the centerline of Willow Road.

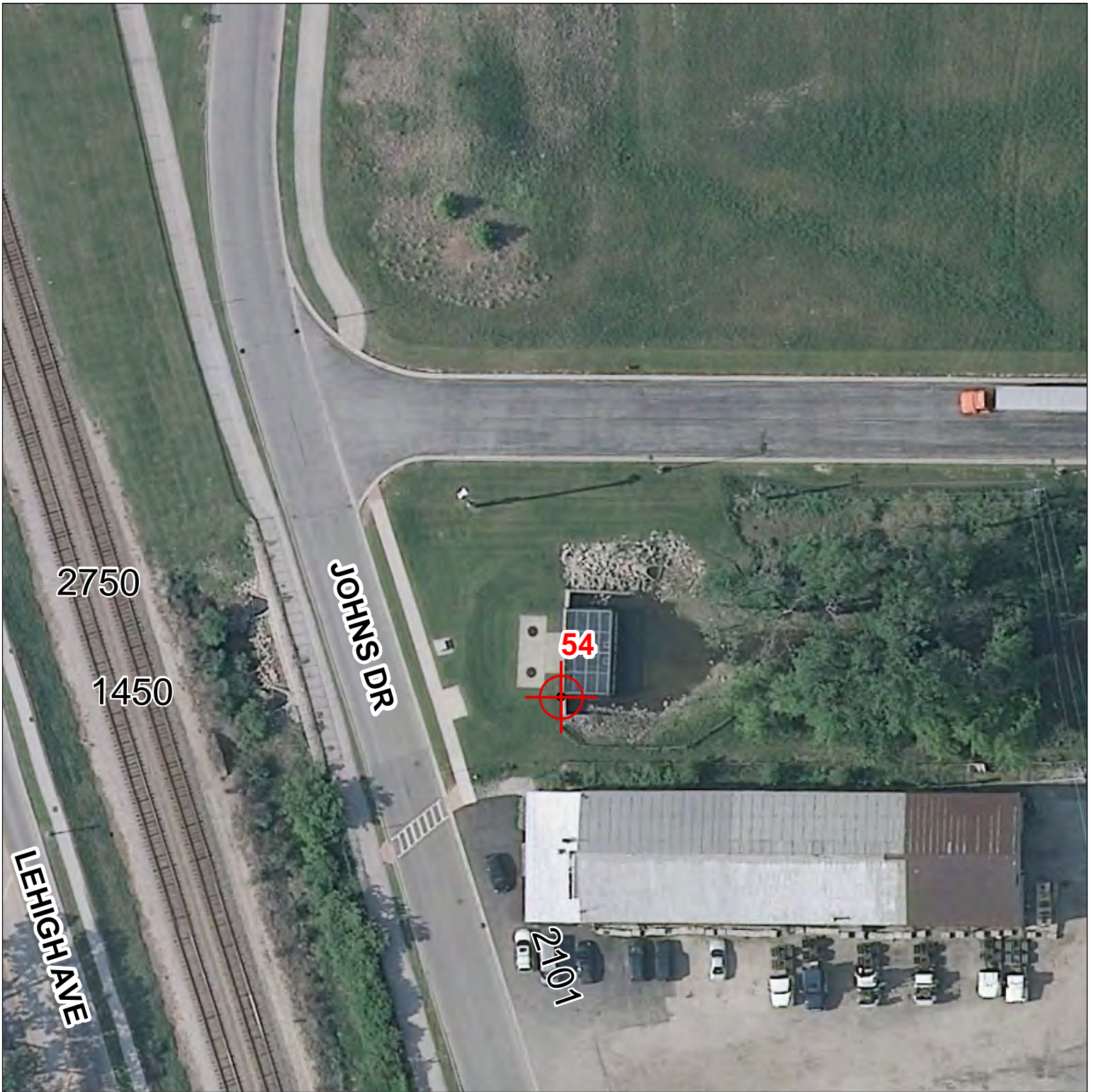


Benchmarks



1 in = 50 ft





Benchmark Station Number: 54

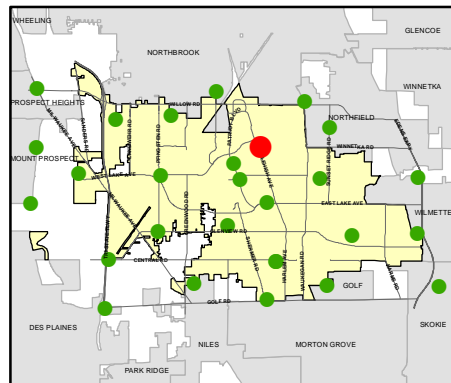
Easting: 1125216.223

Northing: 1977491.8

Elevation: 632.98

Description:

In Glenview, about 0.2 mile west of the NE-27, T42N, R12E. The station is the CHIS. corner of the square cut into the headwall (NE corner of square).



Benchmarks

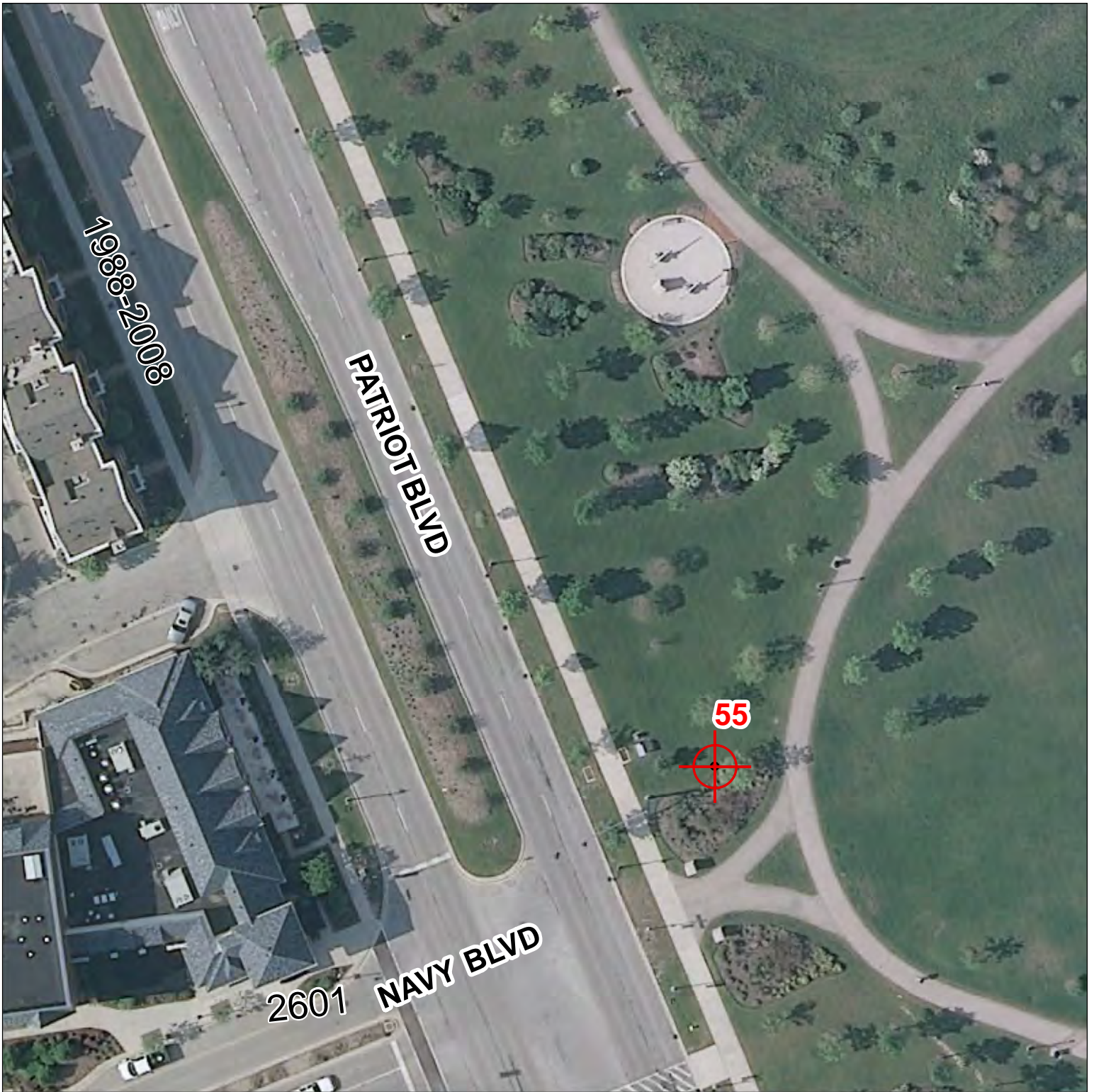


1 in = 50 ft





PATRIOT BOULEVARD; NAVY BOULEVARD



Benchmark Station Number: 55

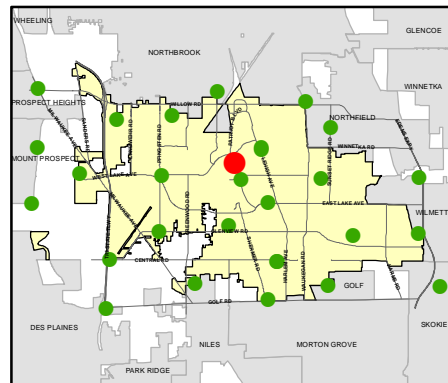
Easting: 1122689.604

Northing: 1975989.431

Elevation: 636.39

Description:

In Glenview, about 0.25 mile N and 0.1 mile west of the CTR. 27, T42N, R12E.



Benchmarks

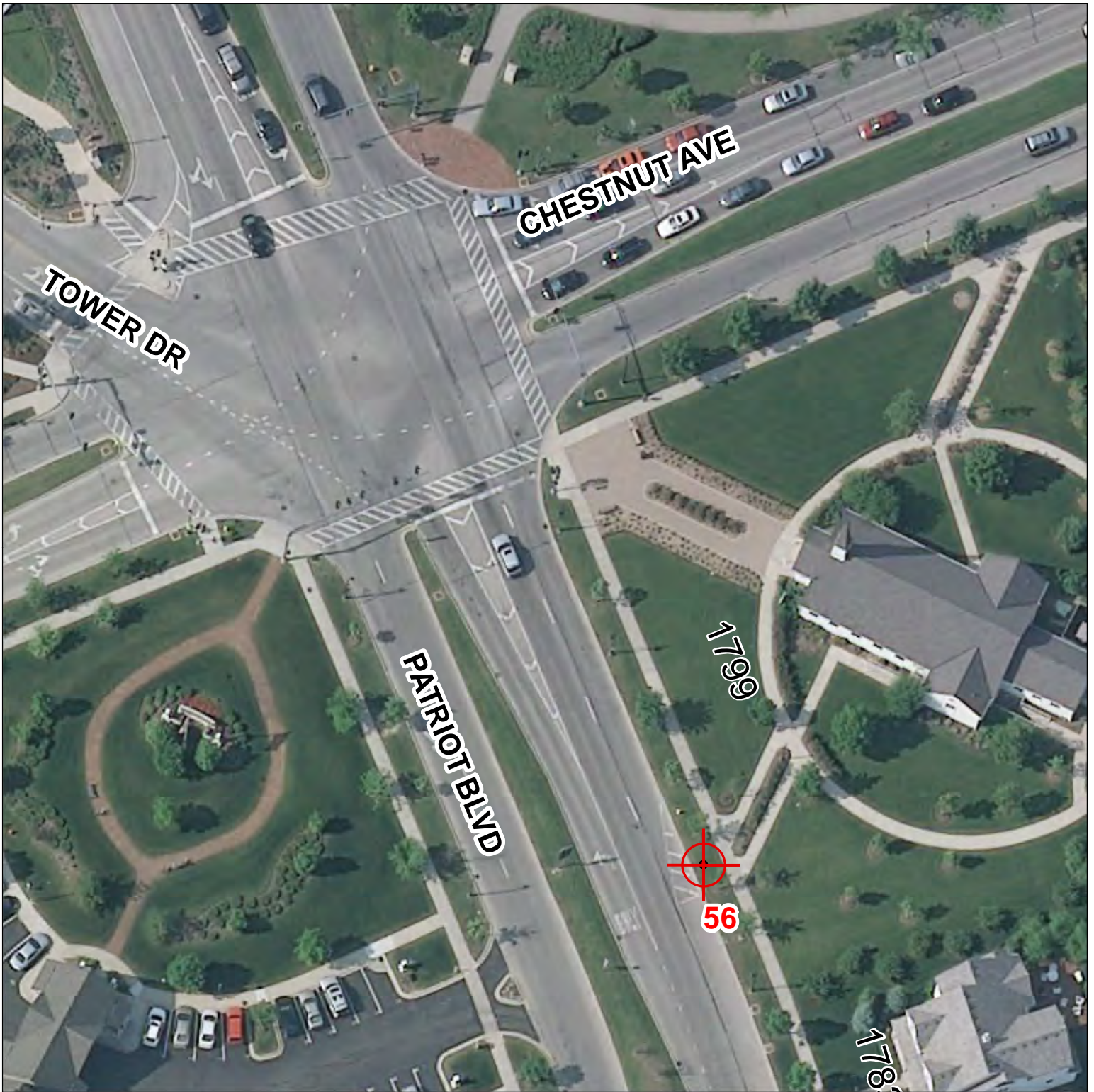


1 in = 50 ft





PATRIOT BOULEVARD; CHESTNUT AVENUE



Benchmark Station Number: 56

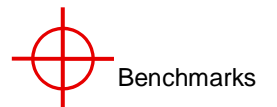
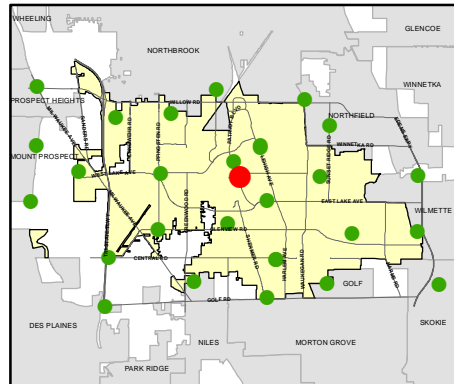
Easting: 1123259.926

Northing: 1974508.538

Elevation: 638.43

Description:

About 300' SW of the CTR. 27,T42N, R12E about 200' south from Chestnut Avenue

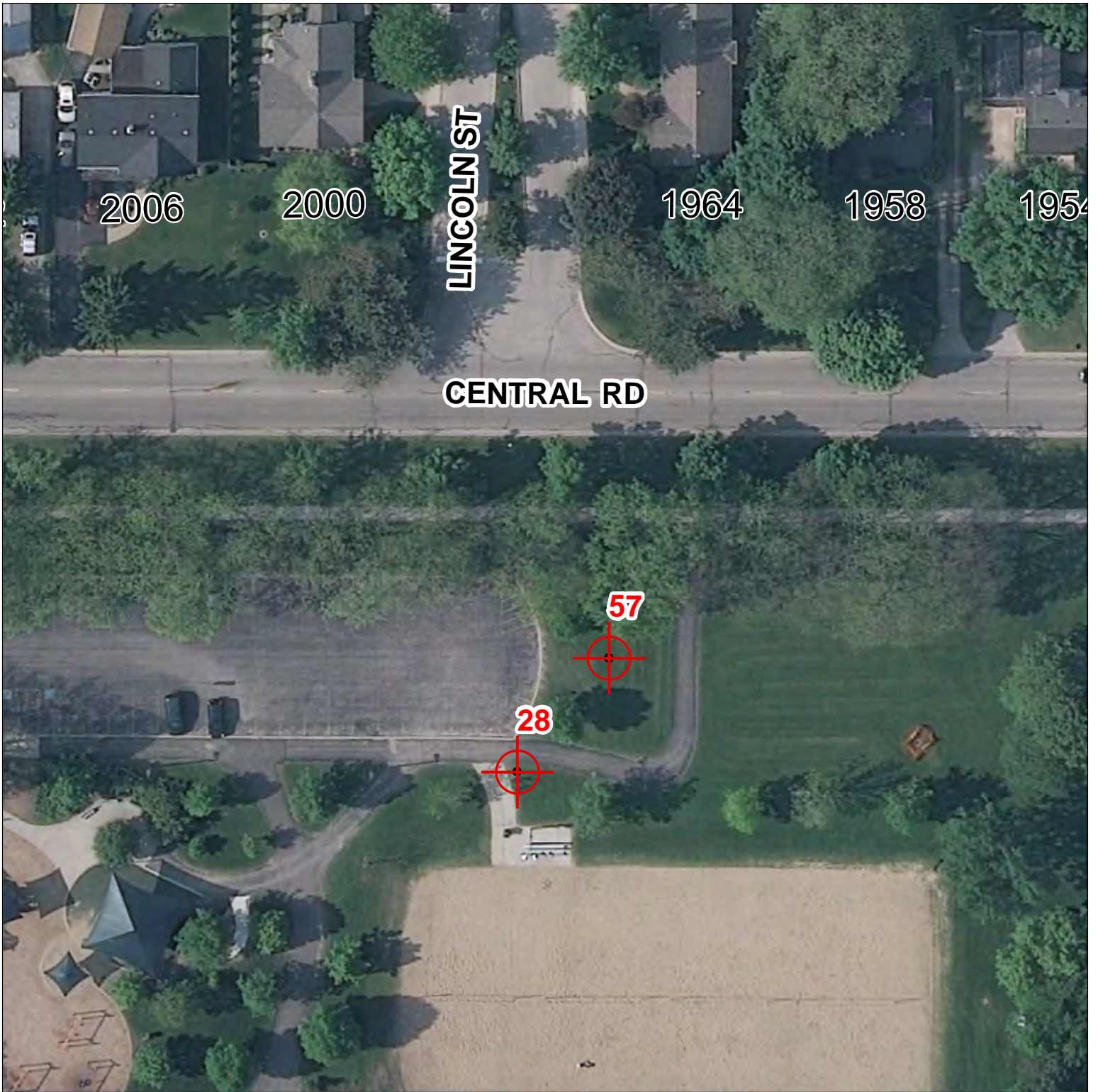


Benchmarks



1 in = 50 ft





Benchmark Station Number: 57

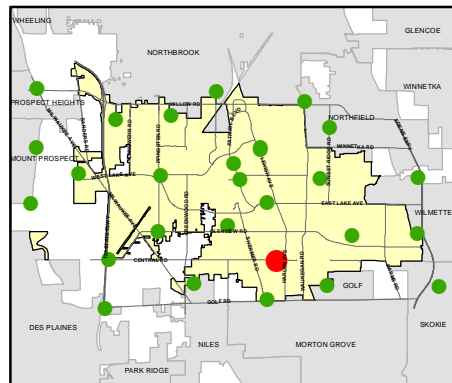
Easting: 1126689.021

Northing: 1966838.398

Elevation: 638.17

Description:

In Glenview, about 800 feet W of the NW-12,T41N, R12E.

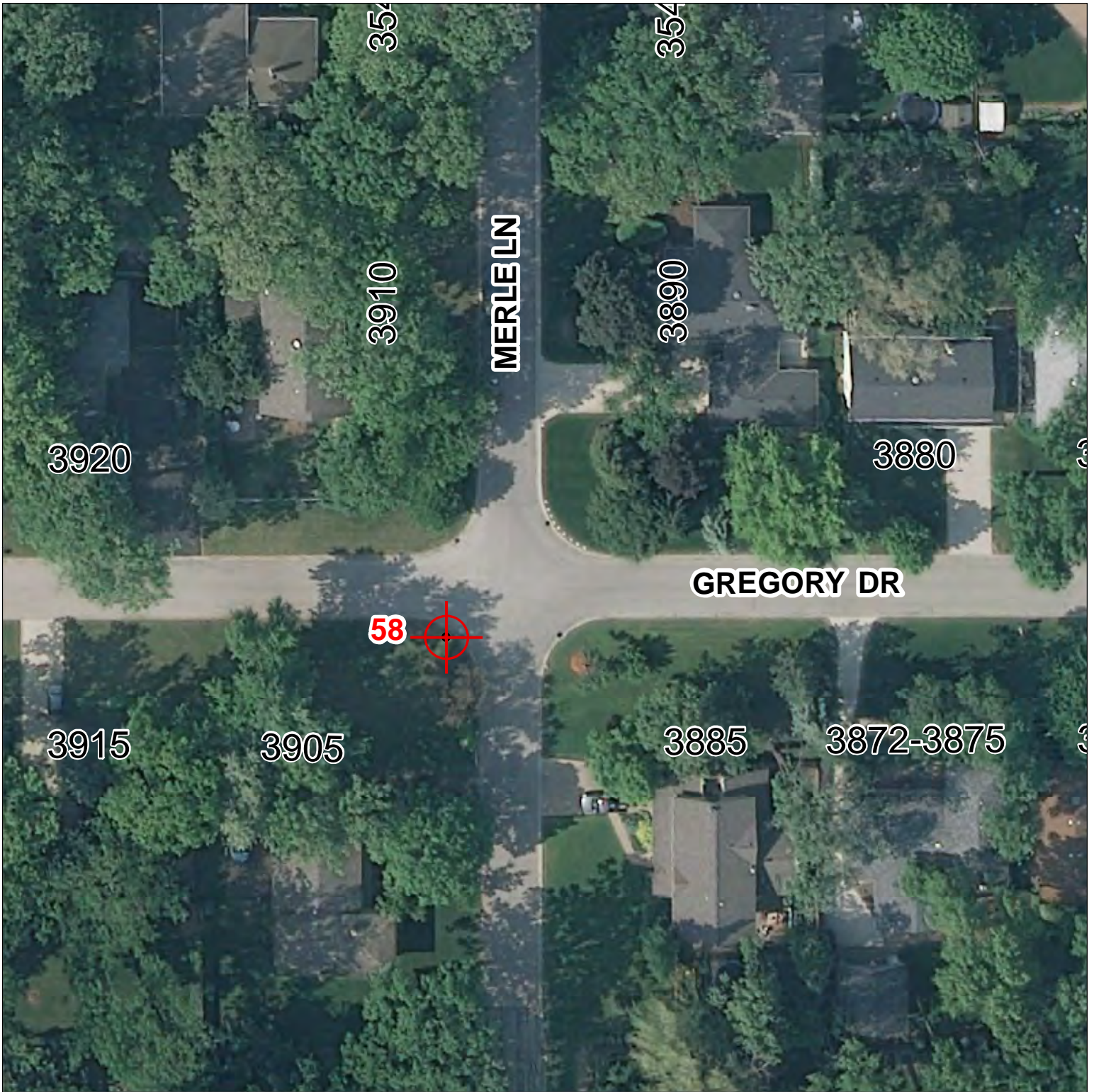


Benchmarks



1 in = 50 ft





Benchmark Station Number: 58

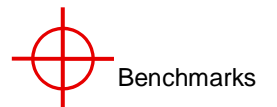
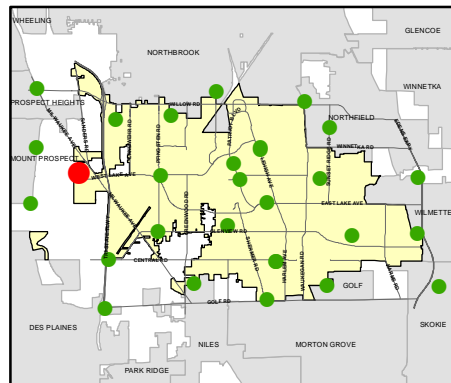
Easting: 1108230.047

Northing: 1975010.018

Elevation: 643.91

Description:

In Unincorporated Cook County, in the Timber Trail Subdivision, about 0.3 mile W and 200 feet S of the NW-30,T42N, R12E.



Benchmarks



1 in = 50 ft

