

GOLDEN ANNIVERSARY DEDICATION OF BEAR FOUNTAIN

Glenview, Illinois

Sunday, September 17, 1967

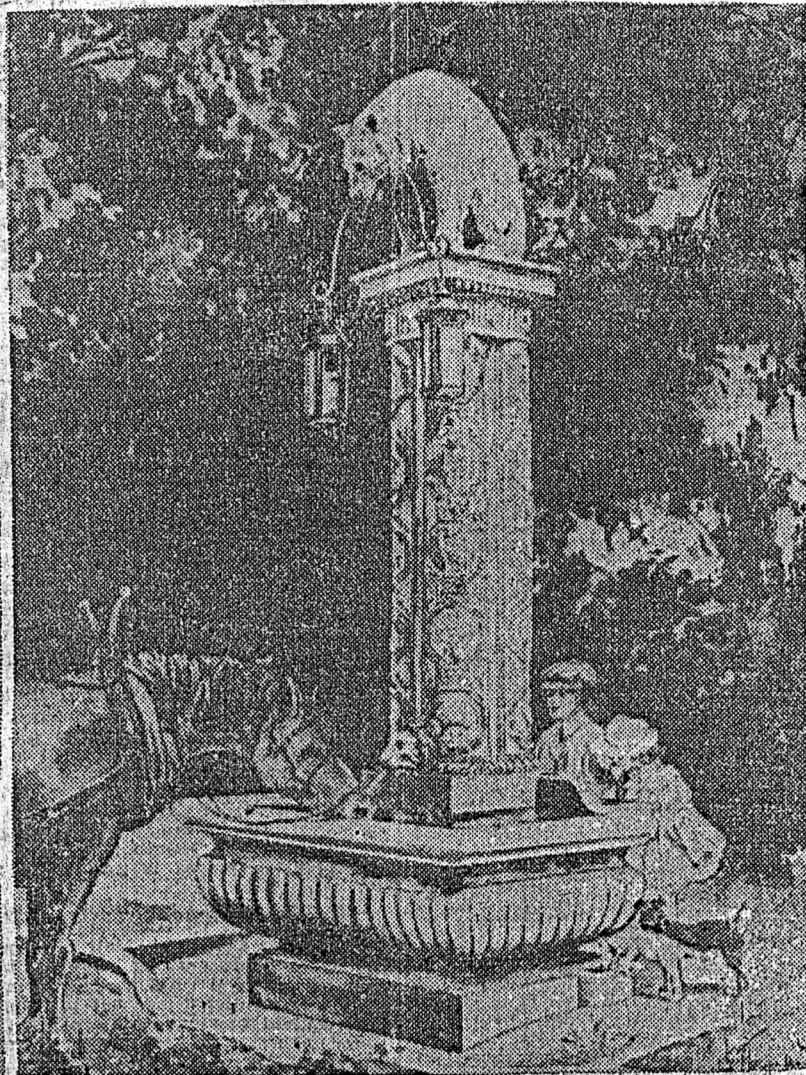
OLD FASHIONED SUNDAY IN THE PARK

Band Music.....Glenview House Band
Master of Ceremonies.....Joe Slattery
Flag Ceremony.....Glenview Naval Air Station Color Guard
Invocation.....Reverend Jerome Hartmann
Welcome.....Paul Thomas, Village President
Barber Shop Melodies.....Sweet Adelines
Band Music.....Glenview House Band
Preserving our Heritage.....Chesly Manly, Chicago Tribune
Community Sing.....Accompanied by Carl Sands
Benediction.....Reverend Kenneth Nye

Program Sponsored Jointly by the Village of Glenview
and the Glenview Historical Society

Band Music.....Glenview House Band
Master of Ceremonies.....Joe Slattery
Flag Ceremony.....Glenview Naval Air Station Color Guard
Invocation.....Reverend Jerome Hartmann
Welcome.....Paul Thomas, Village President
Barber Shop Melodies.....Sweet Adelines
Band Music.....Glenview House Band
Preserving our Heritage.....Chesly Manly, Chicago Tribune
Community Sing.....Accompanied by Carl Sands
Benediction.....Reverend Kenneth Nye

CHILDREN'S FESTIVAL TO MARK DEDICATION OF FOUNTAIN AT GLENVIEW



Drinking fountain, gift of Edwin S. Jackman of Golf, Ill., to Glenview

Friday will be a gala day for the residents of Glenview, especially the children, for then will be dedicated the handsome drinking fountain donated to the village by Edwin S. Jackman of Golf, Ill. Mr. Jackman calls his gift "a tribute to childhood." In connection with the dedication ceremonies a festival for the young people of Glenview and many of the surrounding villages has been arranged.

Mr. Jackman has prepared a special message for the children. Other speakers who will help make the celebration auspicious are John E. Tobin, county superintendent

of schools; Robert Switzer, county clerk; Peter Hoffman, coroner; Edwin Rugen, president of the village; Horace MacCullen, former president; Joseph Morton and others.

The drinking fountain is an imposing affair of metal and concrete. The column which rises from the center of the base is surmounted by the figure of a bear weighing 1,900 pounds. In its mouth is an iron piece from which hang two lanterns.

"I was thirsty and ye gave me drink," are the only words inscribed on the fountain.

Chicago Tribune

Sept 12 1917