

# PRELIMINARY SITE IMPROVEMENT PLANS for WESTGATE AT THE GLEN

## GLENVIEW, ILLINOIS PROJECT NO:7601



**DEVELOPER**

EDWARD R. JAMES PARTNERS, LLC  
2550 WAUKEGAN ROAD, SUITE 220  
GLENVIEW, ILLINOIS 60025  
PHONE: (847)-724-8200

**CALL J.U.L.I.E. 1-800-892-0123**

WITH THE FOLLOWING:

COUNTY COOK  
CITY, TOWNSHIP GLENVIEW, NORTHFIELD  
SEC. & 1/4 SEC. NO. 28, T42N, R12E

**48 HOURS BEFORE YOU DIG.**  
EXCLUDING SAT., SUN. & HOLIDAYS

**BENCHMARK**

**DESCRIPTION:**

**SOURCE BENCHMARK:**  
GLENVIEW STATION 55  
BERSTEN GPS 3D MONUMENT ABOUT 0.25 MILE  
NORTH AND 0.1 MILE WEST OF THE CENTER  
OF SECTION 27, TOWNSHIP 42 NORTH, RANGE  
12 EAST.  
ELEVATION = 636.386

GLENVIEW STATION 56  
BERSTEN GPS 3D MONUMENT ABOUT 300 FEET  
SOUTHWEST OF THE CENTER OF SECTION 27,  
TOWNSHIP 42 NORTH, RANGE 12 EAST ABOUT  
200 FEET SOUTH FROM "CHESTNUT AVENUE".  
ELEVATION = 638.430

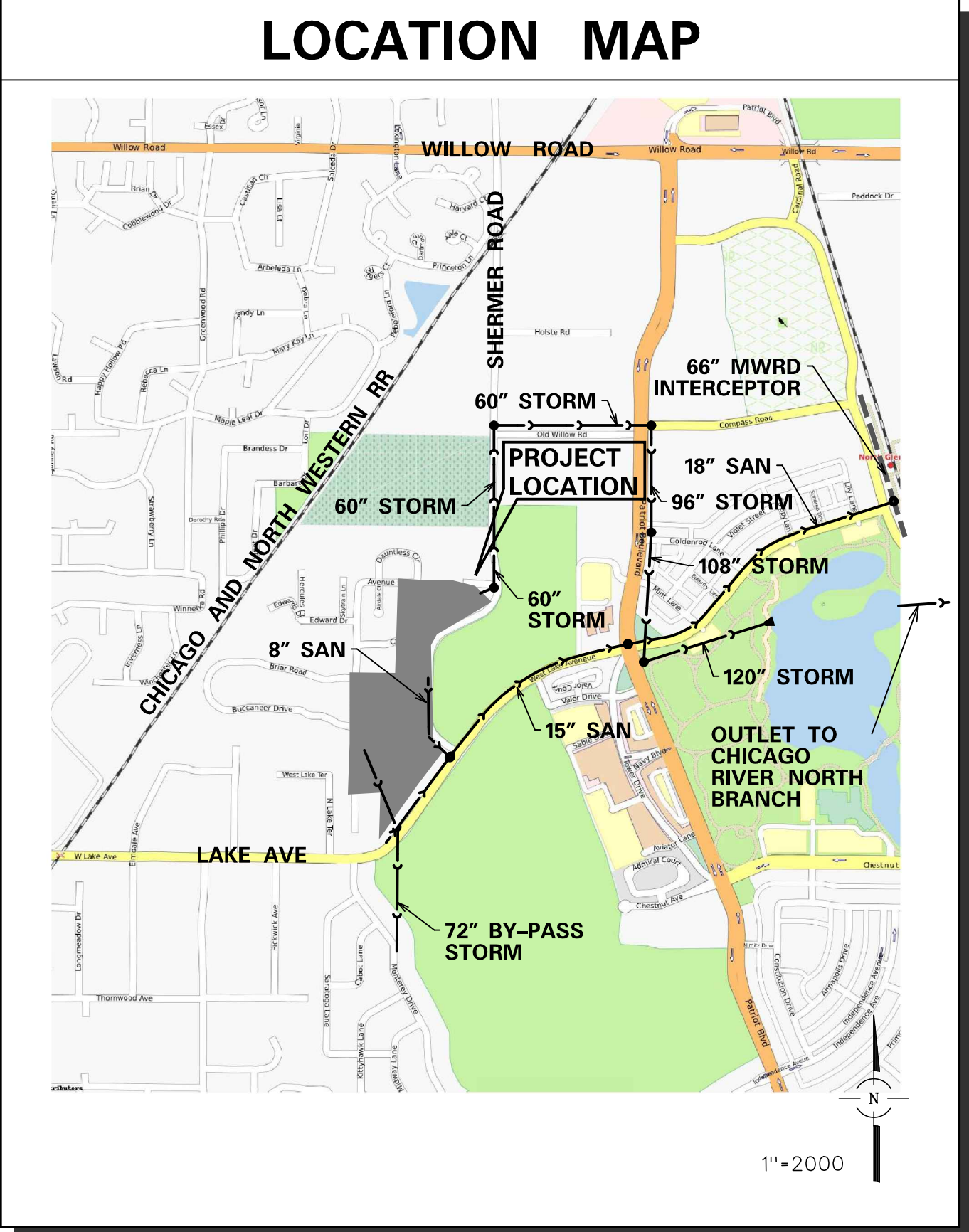
**SITE BENCHMARK:**  
NORTHEAST BOLT ON FIRE HYDRANT ON EAST  
SIDE OF 1ST STREET AT CENTERLINE OF  
BUCCANEER DRIVE JUST WEST OF "KIDS  
WORLD DAY CARE".  
ELEVATION = 654.77

**NOTES:**

1. ALL CONSTRUCTION SHALL CONFORM TO APPLICABLE SECTIONS OF THE STANDARD SPECIFICATIONS FOR ROAD AND BRIDGE CONSTRUCTION IN ILLINOIS AND STANDARD SPECIFICATIONS FOR SEWER AND WATER MAIN CONSTRUCTION IN ILLINOIS AND THE SUBDIVISION ORDINANCES FOR THE VILLAGE OF GLENVIEW.
2. ALL SANITARY SEWERS SHALL BE PVC PIPE, ASTM D-3034, SDR 26, 8" DIAMETER, UNLESS NOTED OTHERWISE. ALL SANITARY MANHOLES SHALL BE 48" DIA.
3. ALL STORM SEWERS SHALL BE REINFORCED CONCRETE PIPE ASTM C-76 WITH O-RING GASKET CONFORMING TO ASTM C-443. SIZES TO BE DETERMINED AT TIME OF FINAL ENGINEERING.
4. ALL WATER MAIN TO BE DUCTILE IRON PIPE CLASS 52, SIZE TO BE 8" DIAMETER UNLESS NOTED OTHERWISE.
5. STREET LIGHTS SHALL BE PROVIDED ACCORDING TO VILLAGE STANDARDS. LOCATION TO BE FINALIZED AT THE TIME OF FINAL ENGINEERING.
6. LOCATIONS OF EXISTING UTILITIES ARE APPROXIMATE AND ARE TO BE VERIFIED BY CONTRACTOR PRIOR TO CONSTRUCTION.
7. PROPOSED ELEVATIONS AND GRADING, PROPOSED UTILITY SIZES, AND LOCATIONS AS WELL AS PROPOSED SECTIONS AND DETAILS SHOWN HEREIN ARE SCHEMATIC AND PRELIMINARY IN NATURE AND IS SUBJECT TO REVISION AT THE TIME OF FINAL ENGINEERING.
8. APPROPRIATE EASEMENTS FOR ALL UTILITIES WILL BE PROVIDED AT THE TIME OF FINAL ENGINEERING AND SHALL BE REFLECTED ON THE FINAL PLAN OF SUBDIVISION.
9. STREET SIGNS SHALL BE PROVIDED AT EACH INTERSECTION.
10. PARKWAYS AND DETENTION AREAS SHALL BE SEEDED, EXCEPT AS NOTED OTHERWISE.
11. UTILITY EASEMENTS FOR SEWERS AND WATER MAIN OUTSIDE OF PUBLIC R.O.W. ARE TO BE PROVIDED AS WELL AS STORMWATER CONTROL EASEMENTS FOR DETENTION / STORMWATER FACILITIES. EASEMENTS REQUIRED WITHIN OUTLOT TO BE DETERMINED AT TIME OF FINAL ENGINEERING / FINAL SUBDIVISION PLAN PREPARATION.
12. ALL SIDEWALKS ARE TO BE CONCRETE AND HAVE RAMPS AT INTERSECTIONS WITH STREETS THAT MEET THE "ILLINOIS ACCESSIBILITY CODE" REQUIREMENTS.
13. ALL HYDRANT AND VALVE LOCATIONS AS WELL AS STORM, SANITARY, AND WATER MAIN SIZING TO BE DETERMINED DURING FINAL ENGINEERING.
14. ALL EXISTING CHAIN LINK FENCES WITH BARBED WIRE SHALL BE REMOVED AND REPLACED WITH CHAIN LINK FENCE.
15. THE EXISTING STREETS, CONCRETE, GRANULAR MATERIAL REMOVED CAN BE USED AS GRANULAR MATERIAL IF PROPER GRADATION IS ACHIEVED AND APPROVED BY SOILS ENGINEER.

**INDEX**

SHEET #	SHEET I.D.	SHEET DESCRIPTION
1	C1	COVER SHEET
2-5	GR1-GR4	GRADING AND STORM WATER MANAGEMENT
6-9	SW1-SW4	SANITARY AND WATER SERVICE
10-14	FT1-FT5	FIRE TRUCK TURN EXHIBIT
15-16	DEMO1-2	DEMOLITION PLAN



**REVISIONS**

ORIGINAL PLAN DATE: MAY 24, 2013

#	SHEET #	REMARKS	DATE
1	ALL	SITE PLAN, STORM TRAP REVISE	6/14/13
2	ALL	SITE PLAN REVISION	9/20/13

9575 W. Higgins Road, Suite 700, Rosemont, Illinois 60018  
Phone: (847) 696-4060 Fax: (847) 696-4065

CONSULTING ENGINEERS

SITE DEVELOPMENT ENGINEERS

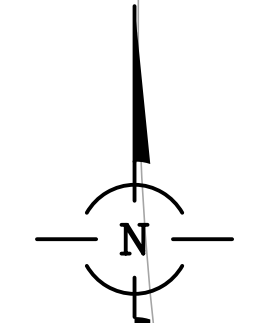
LAND SURVEYORS

**SPACECO INC.**

FILENAME: 7601.02P-TITLE.dwg  
DATE: 09/20/13  
JOB NO. 7601.02  
SHEET **C1**  
1 OF 16



NOTES:  
1. SEE SHEET GR4 FOR NOTES AND LEGEND



SCALE 1" = 40'  
0 40 80

PROPOSED WILLOW CREEK CHURCH  
SEE PLANS BY HAEGER ENGINEERING  
FOR PRELIMINARY DESIGN

VILLAGE OF GLENVIEW  
BY-PASS SEWER  
SEE PLANS BY OTHERS

VALCOUR DRIVE

DAUNTLESS DRIVE

SHERMER ROAD

MATCH LINE SEE SHEET GR2

MATCH LINE SEE SHEET GR2

PRELIMINARY GRADING AND  
STORM WATER MANAGEMENT - 1  
WEST GATE AT THE GLEN  
GLENVIEW, ILLINOIS

CONSULTING ENGINEERS  
SITE DEVELOPMENT ENGINEERS  
LAND SURVEYORS



9575 W. Higgins Road, Suite 700,  
Rosemont, Illinois 60018  
Phone: (847) 696-4060 Fax: (847) 696-4065

FILENAME:  
7601.02P\_GRST\_01.DGN

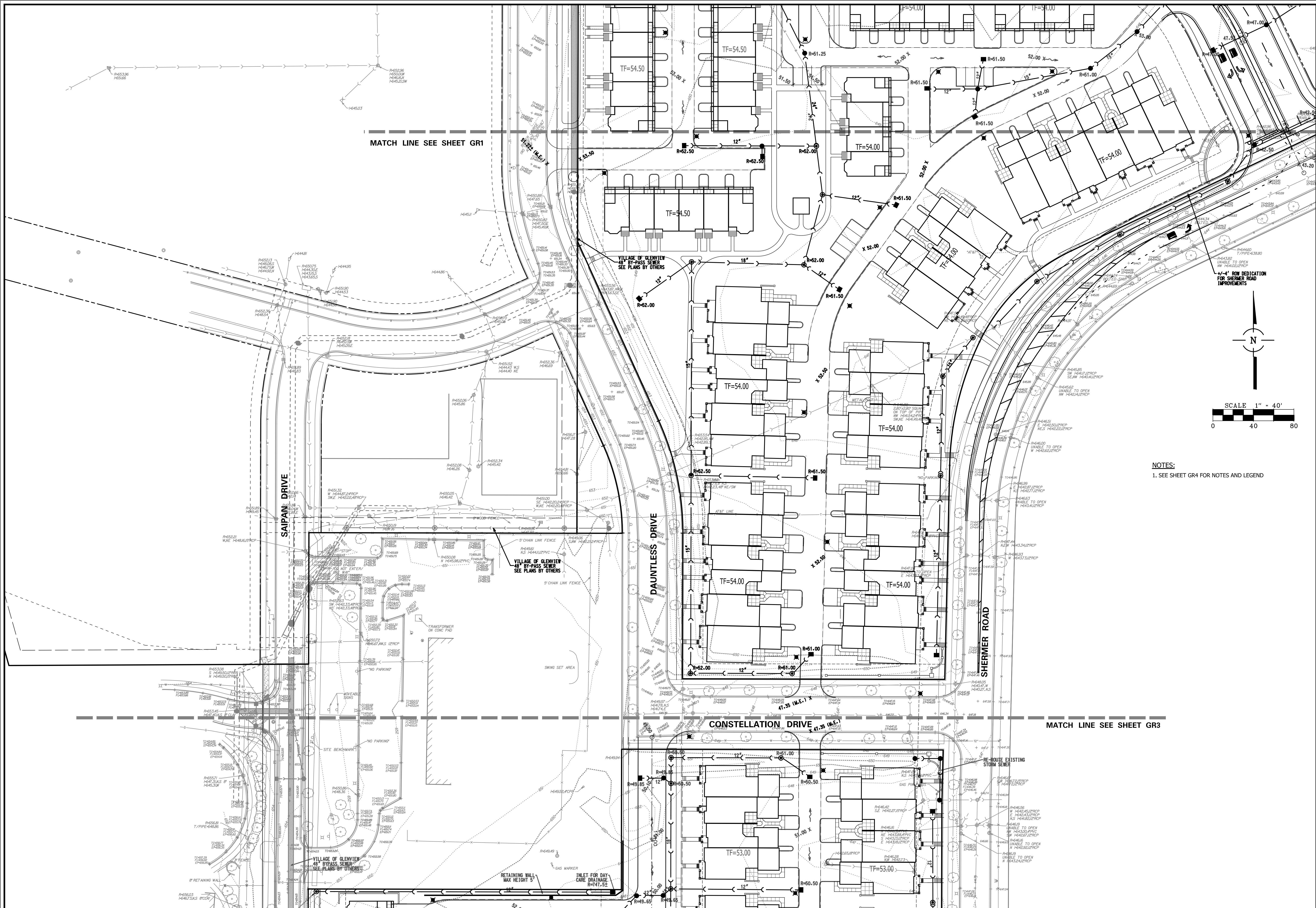
DATE:  
05/24/13

JOB NO.  
7601.02

SHEET  
GR1  
2 OF 16

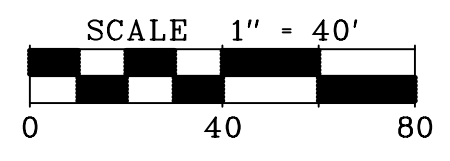
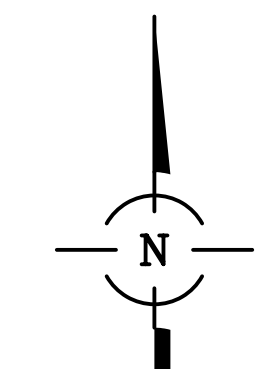
NO.	DATE	REVISIONS	REMARKS
2	9/20/13	SITE PLAN REVISIONS	
1	6/14/13	SITE PLAN, STORM TRAP REVISIONS	





MATCH LINE SEE SHEET GR1

MATCH LINE SEE SHEET GR3



NOTES:  
1. SEE SHEET GR4 FOR NOTES AND LEGEND

NO.	DATE	REMARKS
2	9/20/13	SITE PLAN REVISIONS
1	6/14/13	SITE PLAN, STORM TRAP REVISIONS

NO.	DATE	REMARKS
2	9/20/13	SITE PLAN REVISIONS
1	6/14/13	SITE PLAN, STORM TRAP REVISIONS

**PRELIMINARY GRADING AND STORM WATER MANAGEMENT - 2**  
**WEST GATE AT THE GLEN**  
GLENVIEW, ILLINOIS

**CONSULTING ENGINEERS**  
**SITE DEVELOPMENT ENGINEERS**  
**LAND SURVEYORS**



9575 W. Higgins Road, Suite 700,  
Rosemont, Illinois 60018  
Phone: (847) 696-4060 Fax: (847) 696-4065

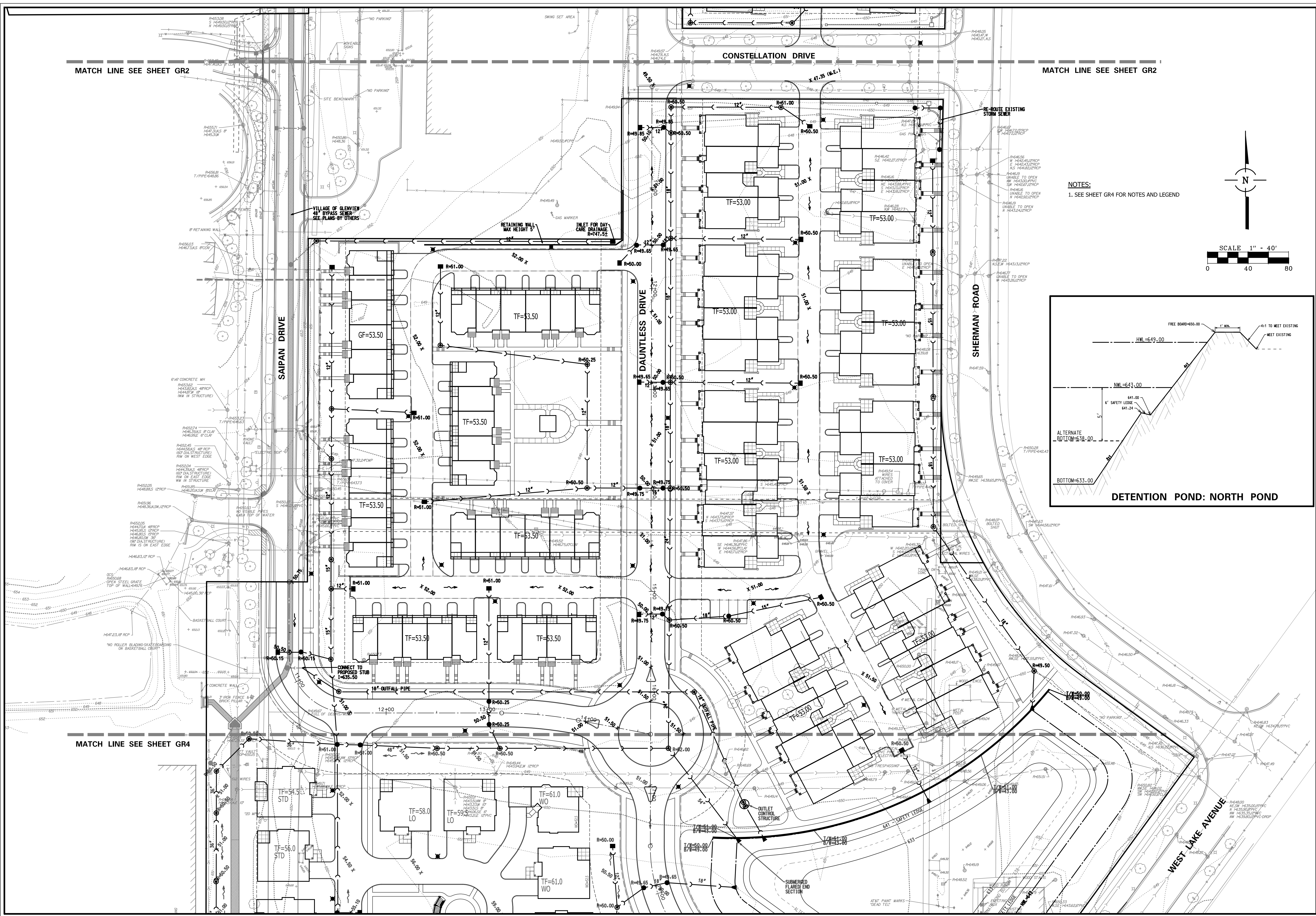
FILENAME:  
760102P\_GRST\_02.DGN

DATE:  
05/24/13

JOB NO.  
7601.02

SHEET  
**GR2**  
3 OF 16



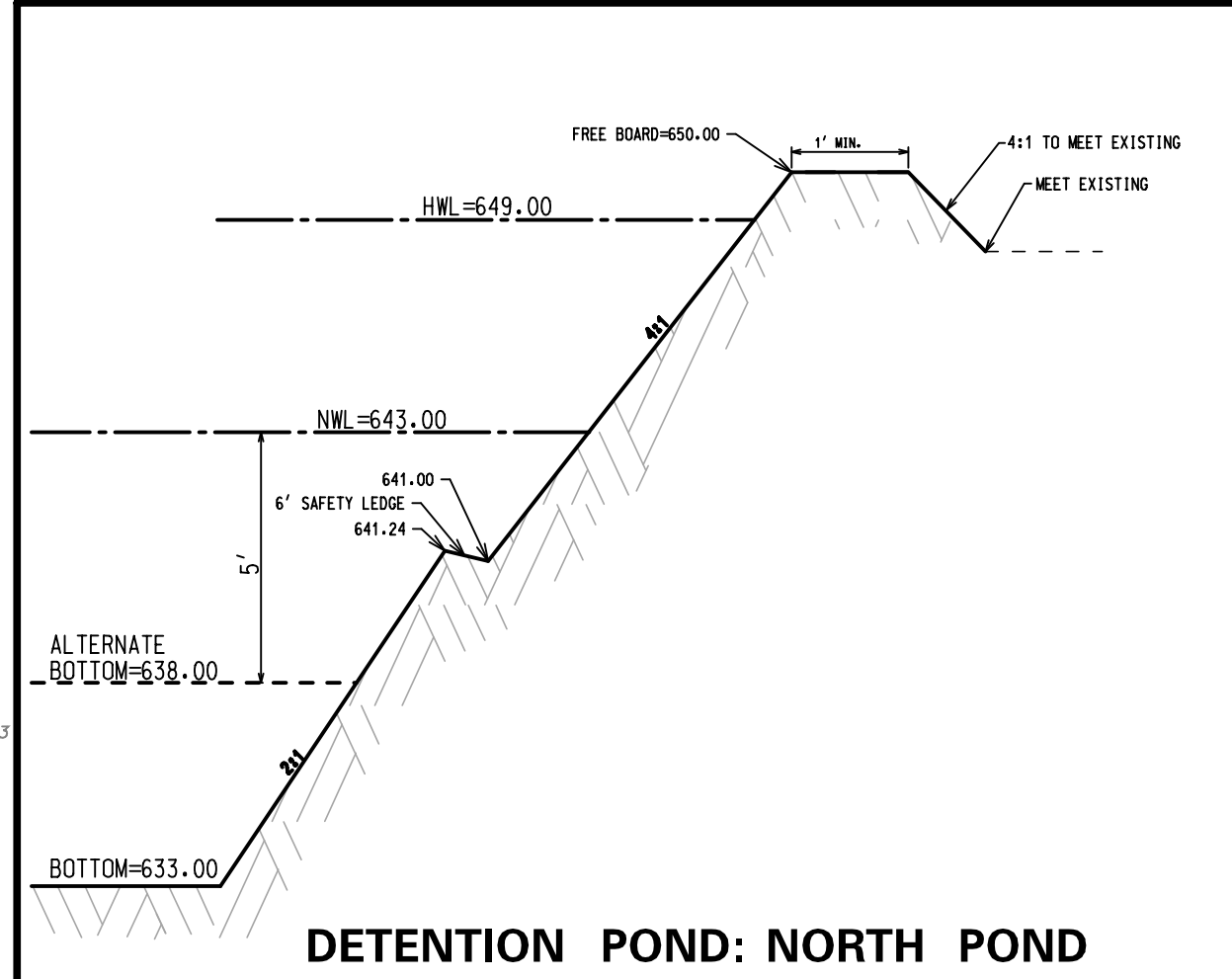
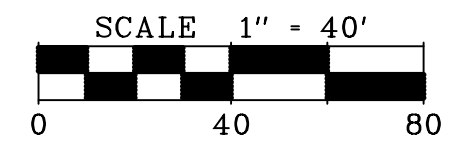
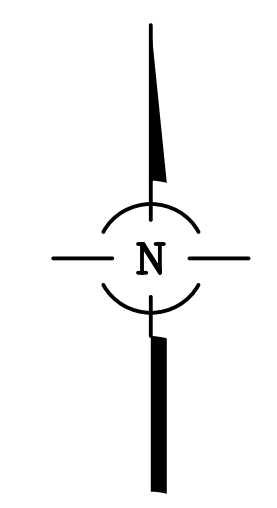


MATCH LINE SEE SHEET GR2

MATCH LINE SEE SHEET GR2

MATCH LINE SEE SHEET GR4

NOTES:  
1. SEE SHEET GR4 FOR NOTES AND LEGEND



NO.	DATE	REVISIONS	REMARKS
2	9/20/13	SITE PLAN REVISIONS	
1	6/14/13	SITE PLAN, STORM TRAP REVISIONS	

**PRELIMINARY GRADING AND STORM WATER MANAGEMENT - 3**  
**WEST GATE AT THE GLEN**  
GLENVIEW, ILLINOIS

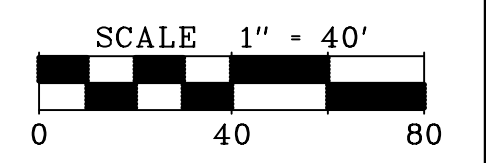
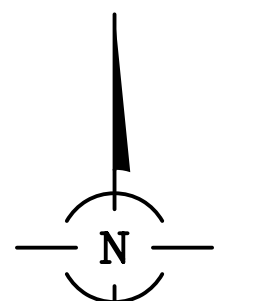
**CONSULTING ENGINEERS**  
**SITE DEVELOPMENT ENGINEERS**  
**LAND SURVEYORS**  
9575 W. Higgins Road, Suite 700,  
Rosemont, Illinois 60018  
Phone: (847) 696-4060 Fax: (847) 696-4065



FILENAME: 7601.02P_GRS1_03.DWG
DATE: 05/24/13
JOB NO. 7601.02
SHEET <b>GR3</b>
4 OF 16



MATCH LINE SEE SHEET GR3

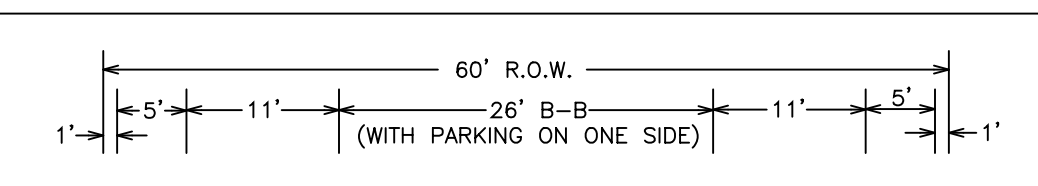


- NOTES:**
1. ADD 600 TO ELEVATIONS SHOWN AS XX.XX.
  2. ALL CURB AND GUTTER IS STANDARD PITCH UNLESS NOTED OTHERWISE.
  3. ALL SPOT GRADES ALONG CURB LINE ARE EDGE OF PAVEMENT UNLESS NOTED OTHERWISE.
  4. ALL WALLS SHALL BE LOCATED 1 FOOT FROM R.O.W. LINE OR PROPERTY LINE.
  5. ALL UNITS WILL HAVE SUMP PUMP CONNECTED TO STORM SEWER WITH "WYE" OR STORM STRUCTURE.
  6. ALL STORM SEWERS NOT IN PUBLIC R.O.W. TO BE PRIVATE.
  7. DETENTION PONDS TO BE PRIVATELY OWNED AND MAINTAINED.

- LEGEND**
- TF TOP OF FOUNDATION
  - LOCAL DRAINAGE
  - 100-YEAR OVERLAND FLOW ROUTE
  - LOCAL DRAINAGE DIVIDE
  - X 61.00 SPOT GRADE
  - WO WALKOUT
  - LO LOOKOUT
  - PLO PARTIAL LOOKOUT

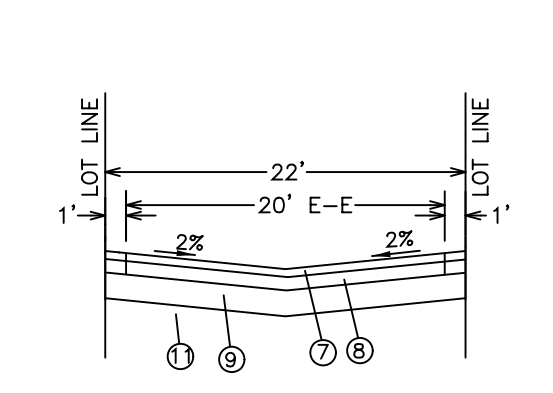
**POND (SOUTH)**

DETENTION	649
HWL =	
NWL =	643
STORAGE VOLUME =	6.6 AC-FT



**STRUCTURAL #**

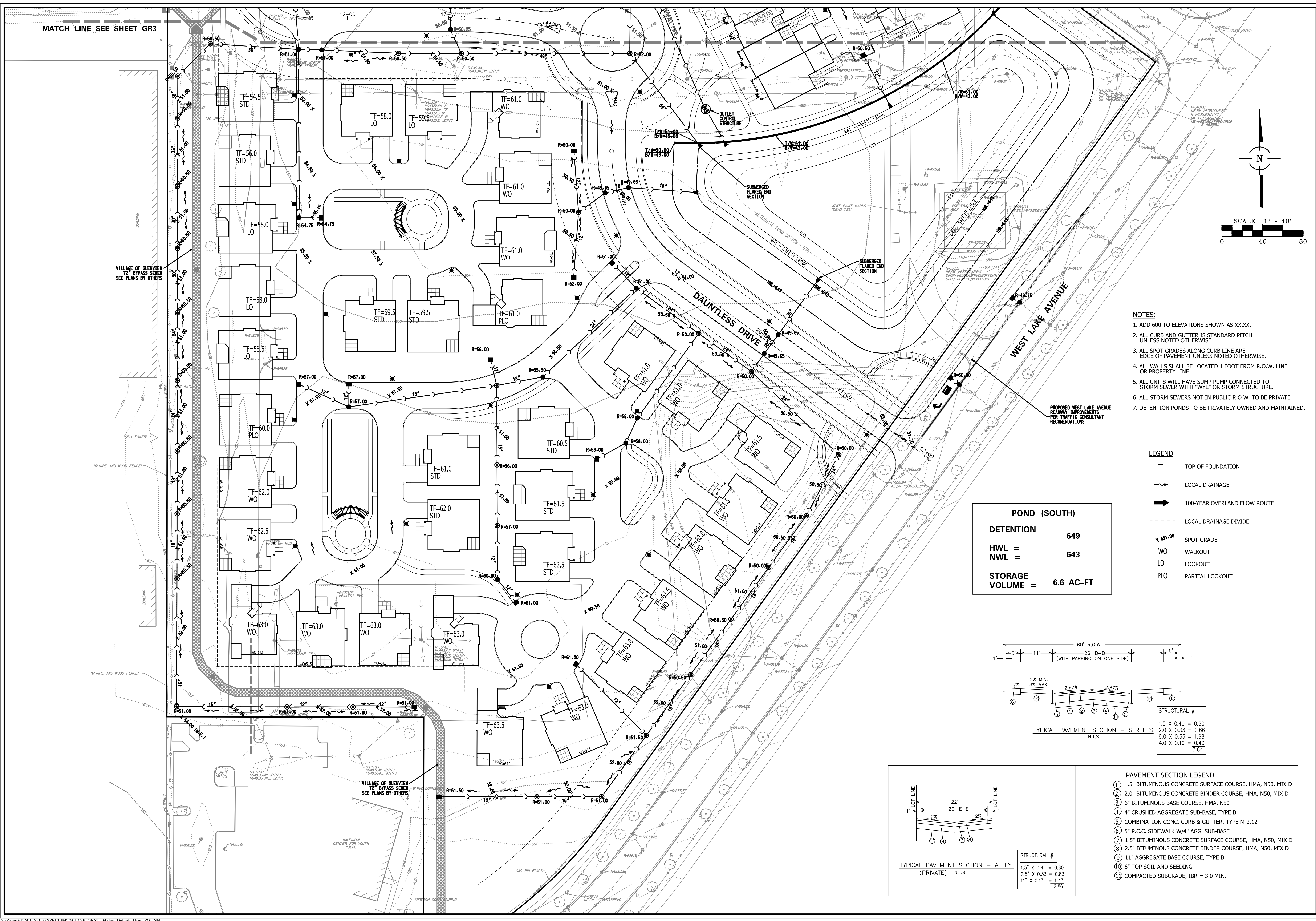
1.5" X 0.40 =	0.60
2.0" X 0.33 =	0.66
6.0" X 0.33 =	1.98
4.0" X 0.10 =	3.64



**STRUCTURAL #**

1.5" X 0.4 =	0.60
2.5" X 0.33 =	0.83
11" X 0.13 =	1.43
	2.86

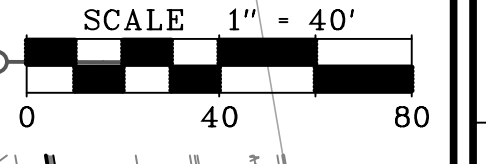
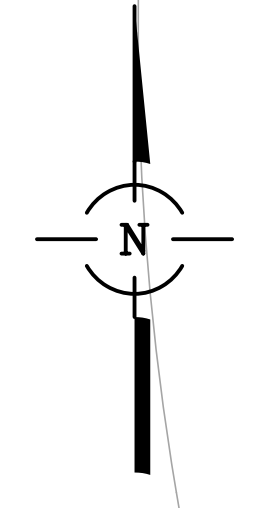
- PAVEMENT SECTION LEGEND**
- 1.5" BITUMINOUS CONCRETE SURFACE COURSE, HMA, N50, MIX D
  - 2.0" BITUMINOUS CONCRETE BINDER COURSE, HMA, N50, MIX D
  - 6" BITUMINOUS BASE COURSE, HMA, N50
  - 4" CRUSHED AGGREGATE SUB-BASE, TYPE B
  - COMBINATION CONC. CURB & GUTTER, TYPE M-3.12
  - 5" P.C.C. SIDEWALK W/4" AGG. SUB-BASE
  - 1.5" BITUMINOUS CONCRETE SURFACE COURSE, HMA, N50, MIX D
  - 2.5" BITUMINOUS CONCRETE BINDER COURSE, HMA, N50, MIX D
  - 11" AGGREGATE BASE COURSE, TYPE B
  - 6" TOP SOIL AND SEEDING
  - COMPACTED SUBGRADE, IIR = 3.0 MIN.



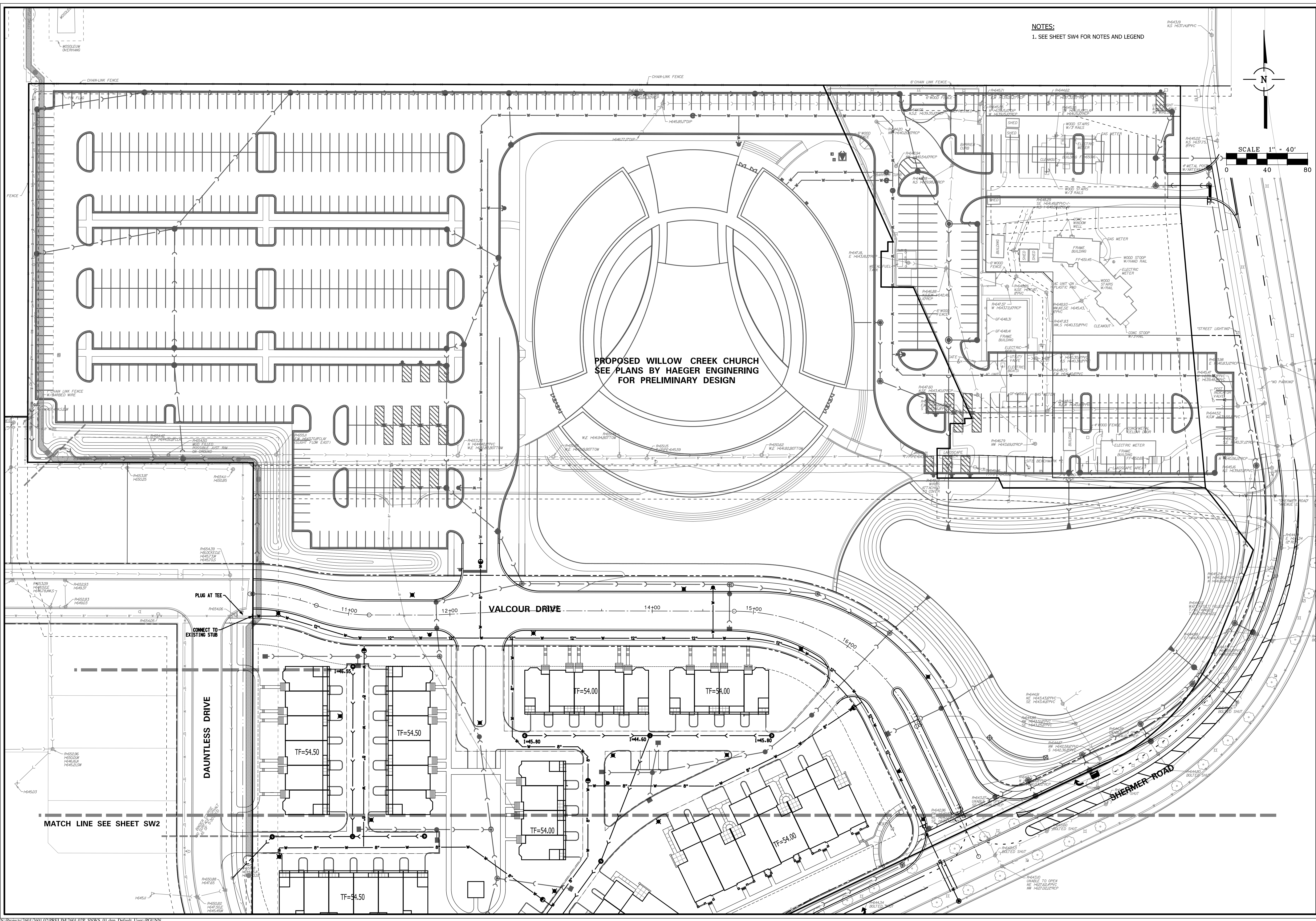
<b>PRELIMINARY GRADING AND STORM WATER MANAGEMENT - 4</b>	<b>WEST GATE AT THE GLEN</b> GLENVIEW, ILLINOIS
CONSULTING ENGINEERS SITE DEVELOPMENT ENGINEERS LAND SURVEYORS 9575 W. Higgins Road, Suite 700, Rosemont, Illinois 60018 Phone: (847) 696-4060 Fax: (847) 696-4065	FILENAME: 7601.02P_GRST_04.DGN DATE: 05/24/13 JOB NO. 7601.02 SHEET <b>GR4</b> 5 OF 16
9/20/13 SITE PLAN REVISIONS 1 6/14/13 SITE PLAN, STORM TRAP REVISIONS	NO. DATE REMARKS NO. DATE REMARKS



NOTES:  
1. SEE SHEET SW4 FOR NOTES AND LEGEND



PROPOSED WILLOW CREEK CHURCH  
SEE PLANS BY HAEGER ENGINEERING  
FOR PRELIMINARY DESIGN



NO.	DATE	REVISIONS	REMARKS
2	9/20/13	SITE PLAN REVISIONS	
1	6/14/13	SITE PLAN, STORM TRAP REVISIONS	

PRELIMINARY SANITARY  
AND WATER SERVICES - 1

**WEST GATE AT THE GLEN**  
GLENVIEW, ILLINOIS

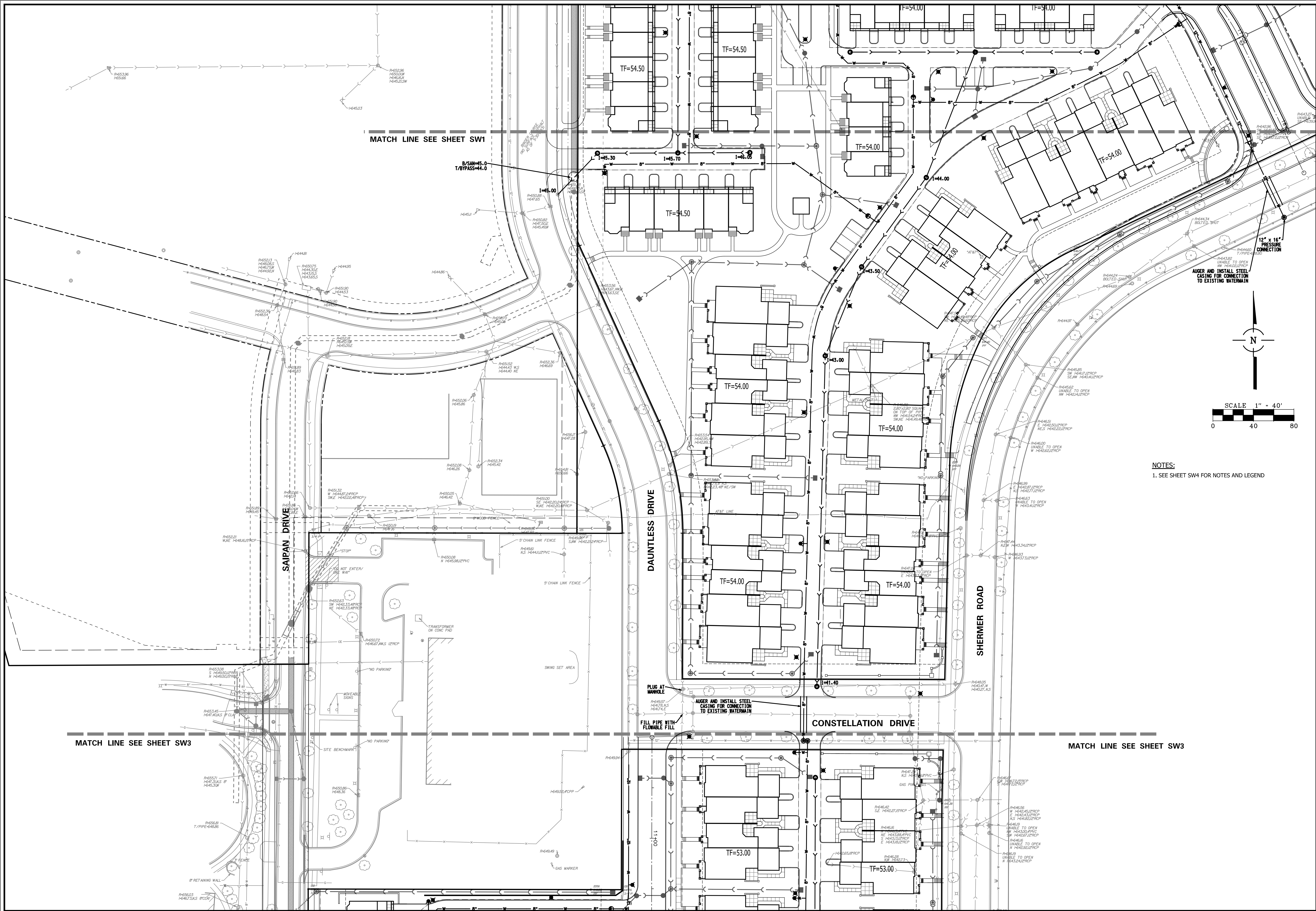
CONSULTING ENGINEERS  
SITE DEVELOPMENT ENGINEERS  
LAND SURVEYORS

9575 W. Higgins Road, Suite 700,  
Rosemont, Illinois 60018  
Phone: (847) 696-4060 Fax: (847) 696-4065



FILENAME: 7601.02P_SNWS_01.DGN
DATE: 05/24/13
JOB NO. 7601.02
SHEET <b>SW1</b> 6 OF 16

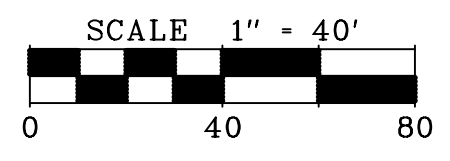
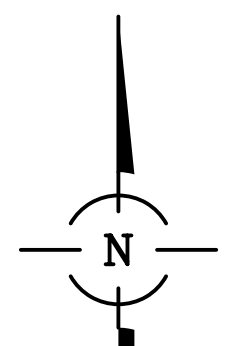




MATCH LINE SEE SHEET SW1

MATCH LINE SEE SHEET SW3

MATCH LINE SEE SHEET SW3



NOTES:  
1. SEE SHEET SW4 FOR NOTES AND LEGEND

NO.	DATE	REMARKS
2	9/20/13	SITE PLAN REVISIONS
1	6/14/13	SITE PLAN, STORM TRAP REVISIONS

NO.	DATE	REMARKS
2	9/20/13	SITE PLAN REVISIONS
1	6/14/13	SITE PLAN, STORM TRAP REVISIONS

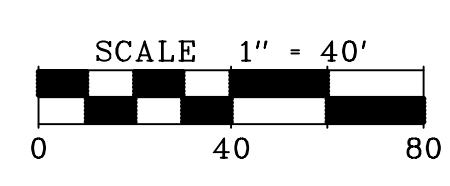
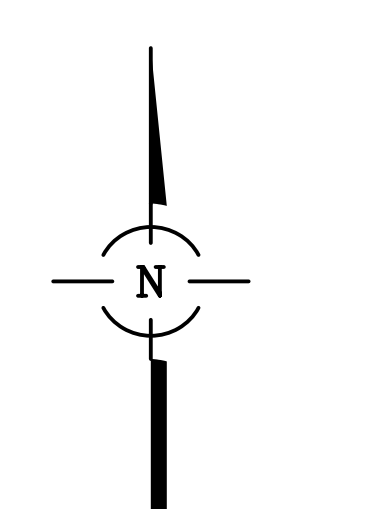
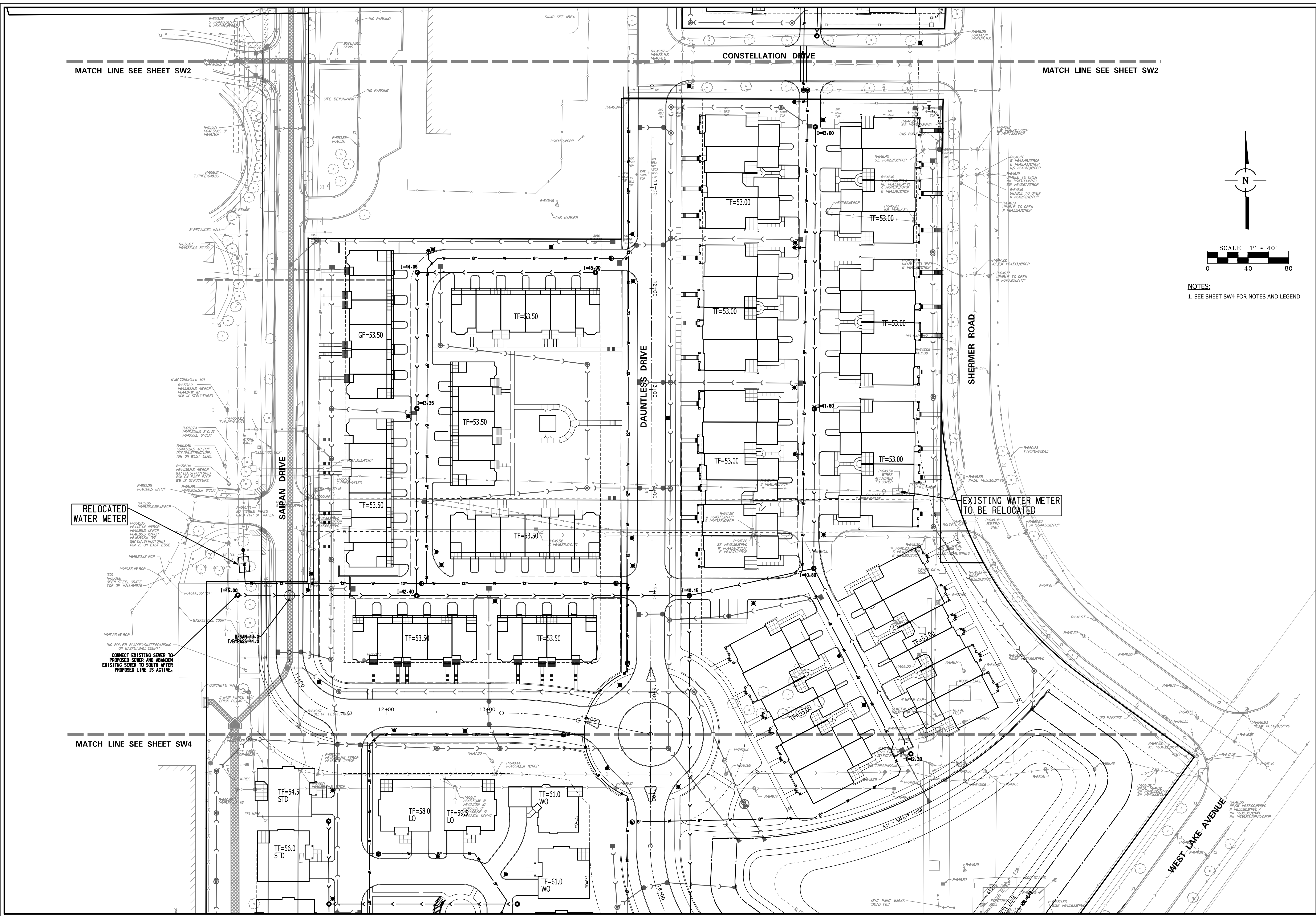
PRELIMINARY SANITARY AND WATER SERVICES - 2  
WEST GATE AT THE GLEN  
GLENVIEW, ILLINOIS

CONSULTING ENGINEERS  
SITE DEVELOPMENT ENGINEERS  
LAND SURVEYORS  
9575 W. Higgins Road, Suite 700,  
Rosemont, Illinois 60018  
Phone: (847) 696-4060 Fax: (847) 696-4065



FILENAME:  
760102P\_SNWS\_02.DGN  
DATE:  
05/24/13  
JOB NO.  
7601.02  
SHEET  
SW2  
7 OF 16





NOTES:  
1. SEE SHEET SW4 FOR NOTES AND LEGEND

RELOCATED WATER METER

EXISTING WATER METER TO BE RELOCATED

NO.	DATE	REVISIONS	REMARKS
2	9/20/13	SITE PLAN REVISIONS	
1	6/14/13	SITE PLAN, STORM TRAP REVISIONS	

**PRELIMINARY SANITARY AND WATER SERVICES - 3**  
**WEST GATE AT THE GLEN**  
GLENVIEW, ILLINOIS

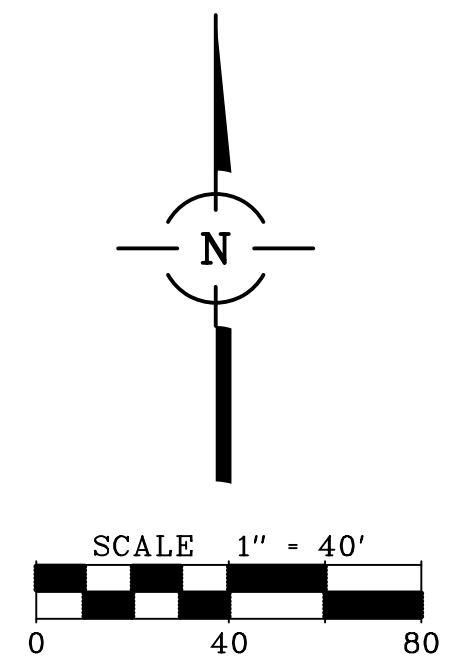
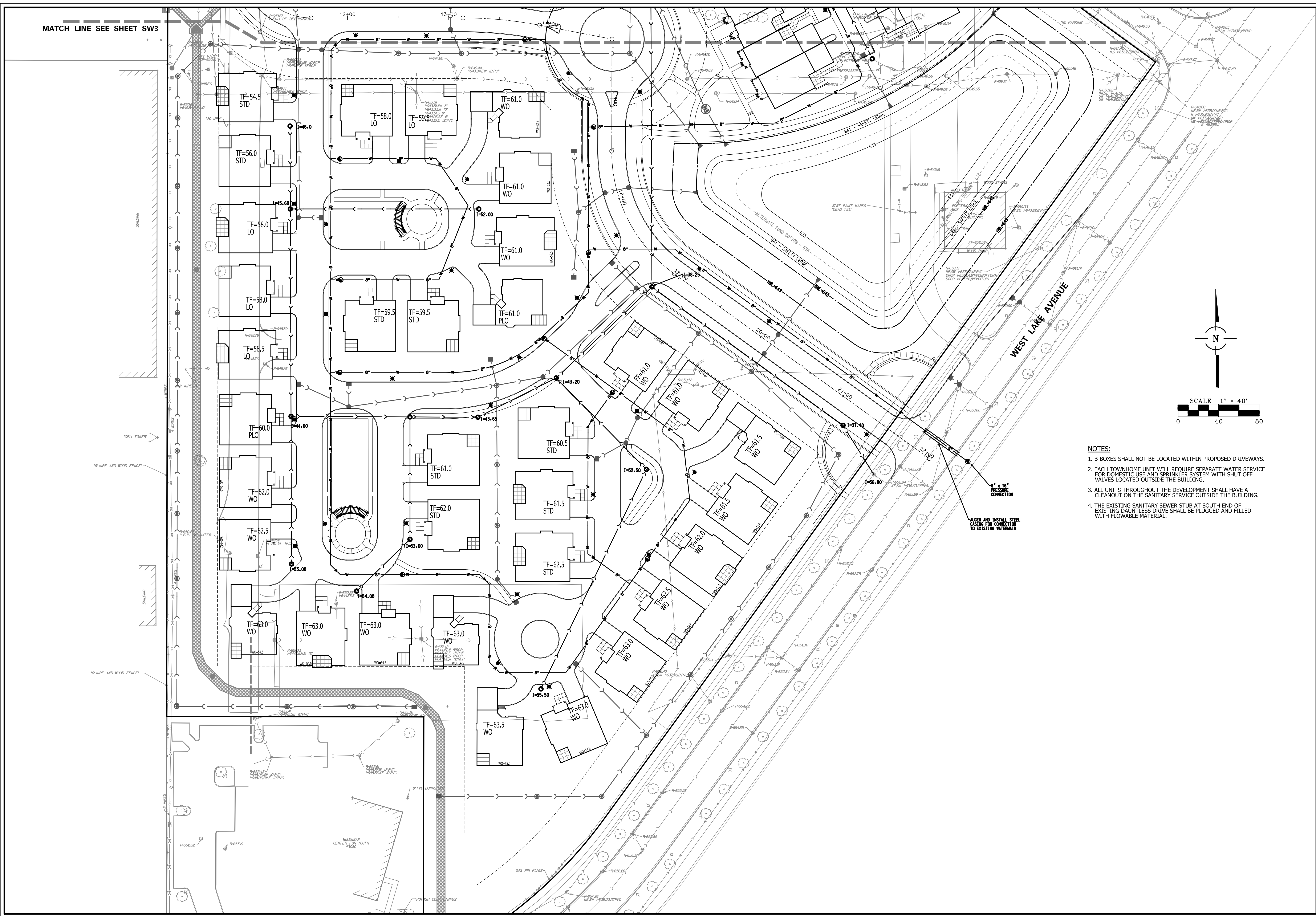
**CONSULTING ENGINEERS**  
**SITE DEVELOPMENT ENGINEERS**  
**LAND SURVEYORS**  
9575 W. Higgins Road, Suite 700,  
Rosemont, Illinois 60018  
Phone: (847) 696-4060 Fax: (847) 696-4065



FILENAME: 7601.02P_SNWS_03.DGN
DATE: 05/24/13
JOB NO. 7601.02
SHEET <b>SW3</b> 8 OF 16



MATCH LINE SEE SHEET SW3



- NOTES:**
1. B-BOXES SHALL NOT BE LOCATED WITHIN PROPOSED DRIVEWAYS.
  2. EACH TOWNHOME UNIT WILL REQUIRE SEPARATE WATER SERVICE FOR DOMESTIC USE AND SPRINKLER SYSTEM WITH SHUT OFF VALVES LOCATED OUTSIDE THE BUILDING.
  3. ALL UNITS THROUGHOUT THE DEVELOPMENT SHALL HAVE A CLEANOUT ON THE SANITARY SERVICE OUTSIDE THE BUILDING.
  4. THE EXISTING SANITARY SEWER STUB AT SOUTH END OF EXISTING DAUNTLESS DRIVE SHALL BE PLUGGED AND FILLED WITH FLOWABLE MATERIAL.

NO.	DATE	REMARKS

NO.	DATE	REVISIONS
2	9/20/13	SITE PLAN REVISIONS
1	6/14/13	SITE PLAN, STORM TRAP REVISIONS

**PRELIMINARY SANITARY AND WATER SERVICES - 4**

**WEST GATE AT THE GLEN**  
GLENVIEW, ILLINOIS

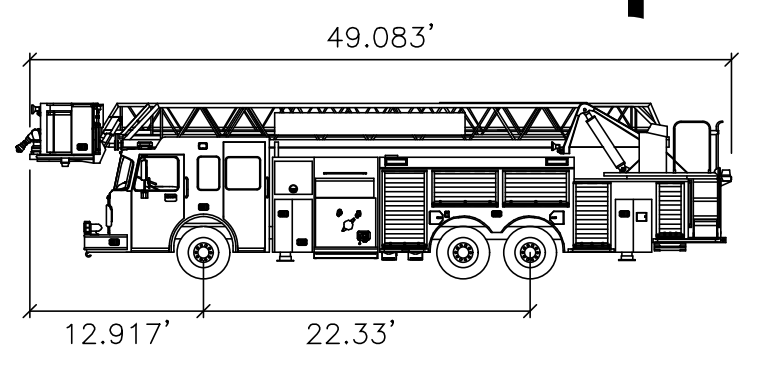
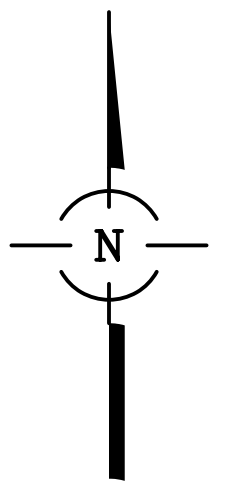
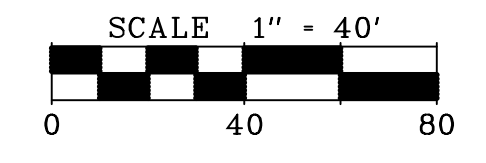
**CONSULTING ENGINEERS**  
**SITE DEVELOPMENT ENGINEERS**  
**LAND SURVEYORS**

9575 W. Higgins Road, Suite 700,  
Rosemont, Illinois 60018  
Phone: (847) 696-4060 Fax: (847) 696-4065



FILENAME: 7601.02P_SNWS_04.DGN
DATE: 05/24/13
JOB NO. 7601.02
SHEET <b>SW4</b> 9 OF 16





Smeal Platform RM 100ft  
feet  
Width : 8.333  
Track : 7.833  
Lock to Lock Time : 0.5  
Steering Angle : 4

PROPOSED WILLOW CREEK CHURCH  
SEE PLANS BY HAEGER ENGINEERING  
FOR PRELIMINARY DESIGN

VALLOUR DRIVE

DAUNTLESS DRIVE

SHERMER ROAD

FIRE TRUCK TURN - 1

WEST GATE AT THE GLEN  
GLENVIEW, ILLINOIS

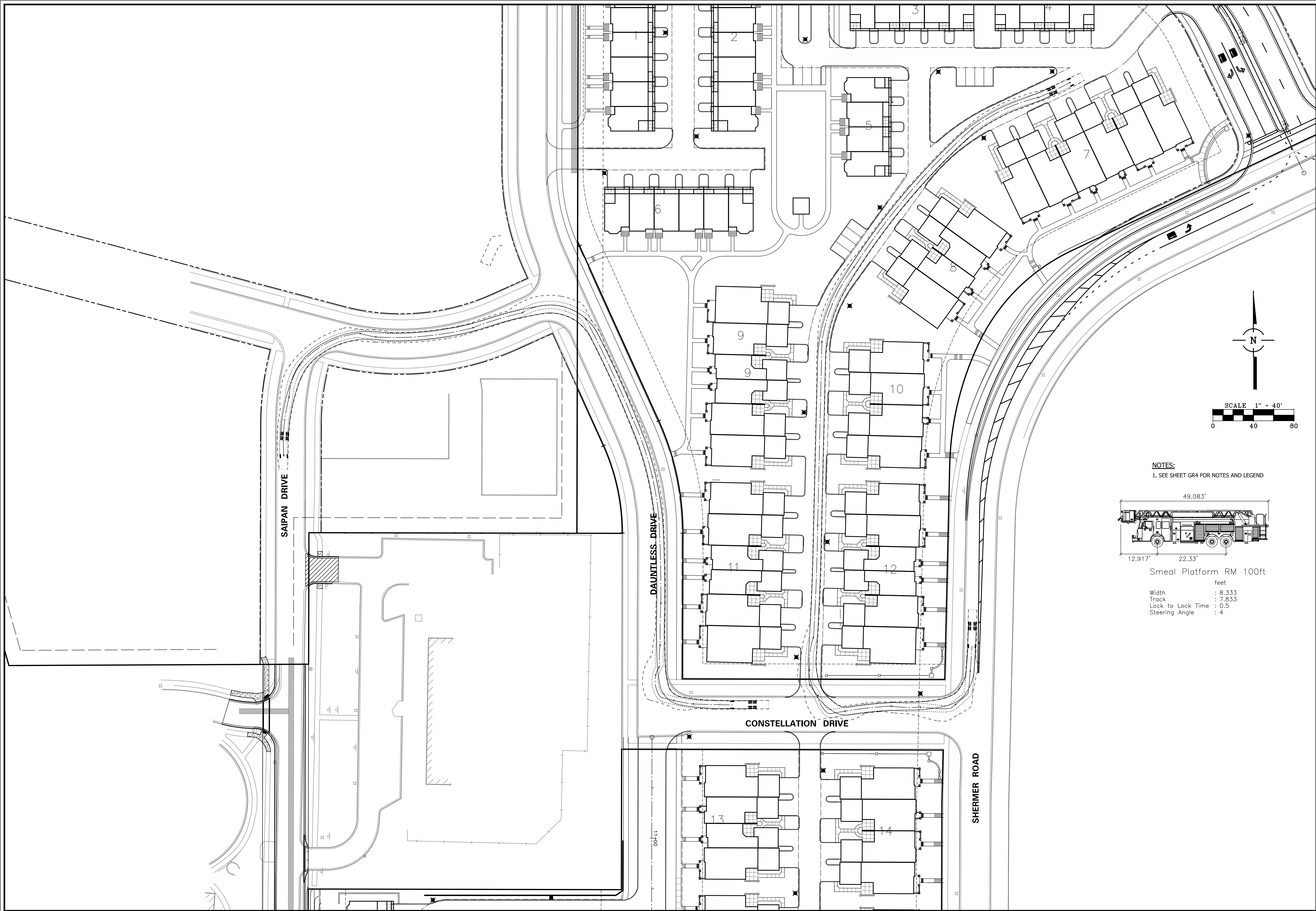
CONSULTING ENGINEERS  
SITE DEVELOPMENT ENGINEERS  
LAND SURVEYORS



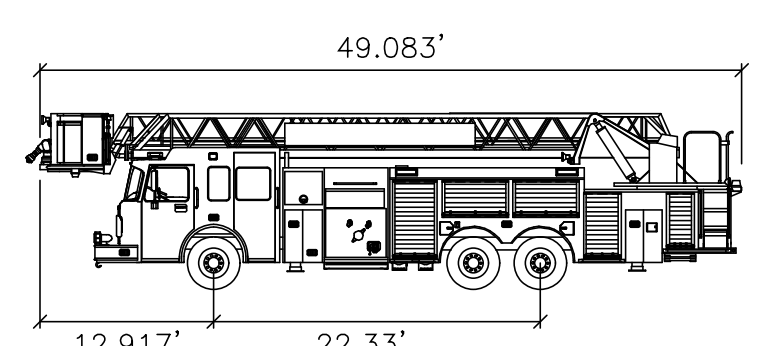
FILENAME:  
7601.02P\_FT01.DGN  
DATE:  
05/24/13  
JOB NO.  
7601.02  
SHEET  
FT01  
10 OF 16

NO.	DATE	REVISIONS	REMARKS
2	9/20/13	SITE PLAN REVISIONS	
1	6/14/13	SITE PLAN, STORM TRAP REVISIONS	





NOTES:  
1. SEE SHEET GR4 FOR NOTES AND LEGEND



Smeal Platform RM 100ft  
feet  
Width : 8.333  
Track : 7.833  
Lock to Lock Time : 0.5  
Steering Angle : 4

NO.	DATE	REMARKS

NO.	DATE	REMARKS
2	9/20/13	SITE PLAN REVISIONS
1	6/14/13	SITE PLAN, STORM TRAP REVISIONS

**FIRE TRUCK TURN - 2**  
**WEST GATE AT THE GLEN**  
GLENVIEW, ILLINOIS

**CONSULTING ENGINEERS**  
**SITE DEVELOPMENT ENGINEERS**  
**LAND SURVEYORS**  
9575 W. Higgins Road, Suite 700,  
Rosemont, Illinois 60018  
Phone: (847) 696-4060 Fax: (847) 696-4065



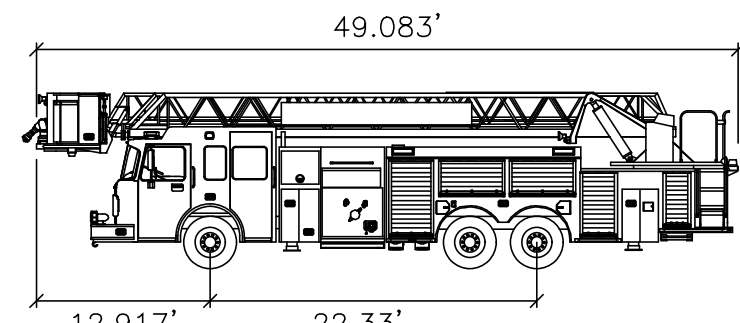
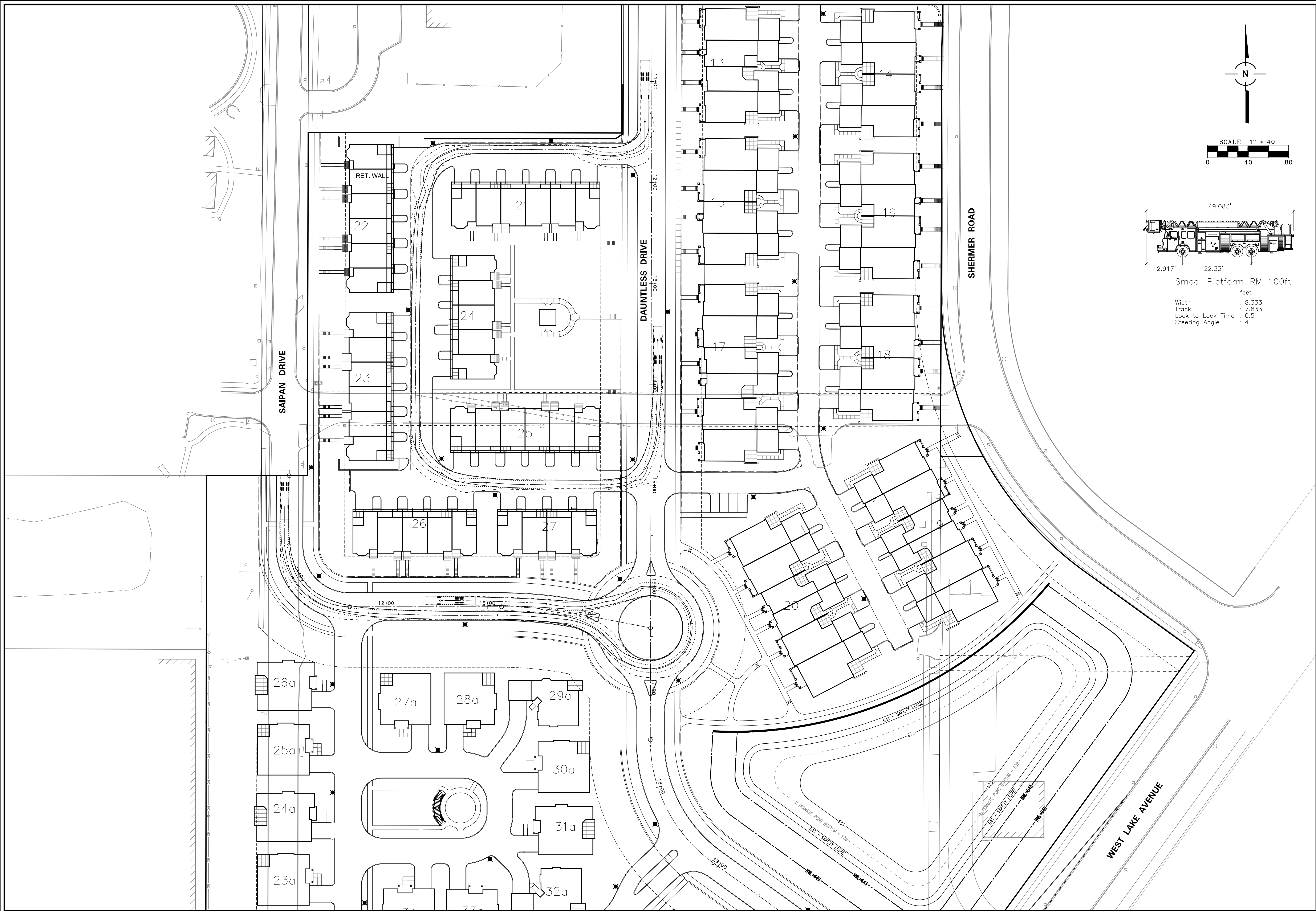
FILENAME:  
7601.02P\_FT02.DGN

DATE:  
05/24/13

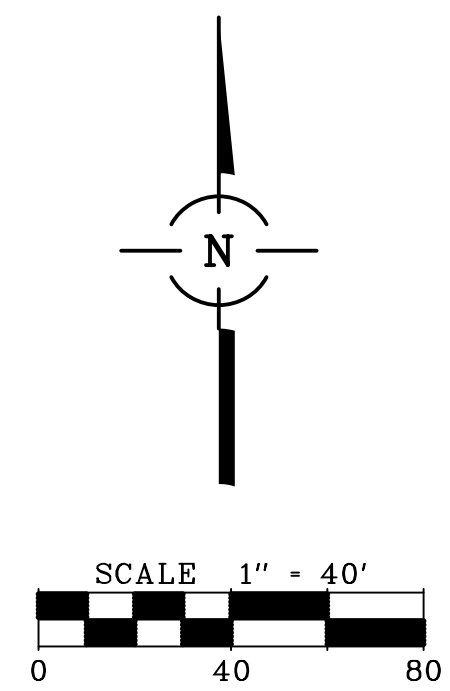
JOB NO.  
7601.02

SHEET  
**FT02**  
11 OF 16





Smeal Platform RM 100ft  
feet  
Width : 8.333  
Track : 7.833  
Lock to Lock Time : 0.5  
Steering Angle : 4



NO.	DATE	REMARKS

NO.	DATE	REMARKS
2	9/20/13	SITE PLAN REVISIONS
1	6/14/13	SITE PLAN, STORM TRAP REVISIONS

**FIRE TRUCK TURN - 3**  
**WEST GATE AT THE GLEN**  
GLENVIEW, ILLINOIS

**CONSULTING ENGINEERS**  
**SITE DEVELOPMENT ENGINEERS**  
**LAND SURVEYORS**  
9575 W. Higgins Road, Suite 700,  
Rosemont, Illinois 60018  
Phone: (847) 696-4060 Fax: (847) 696-4065



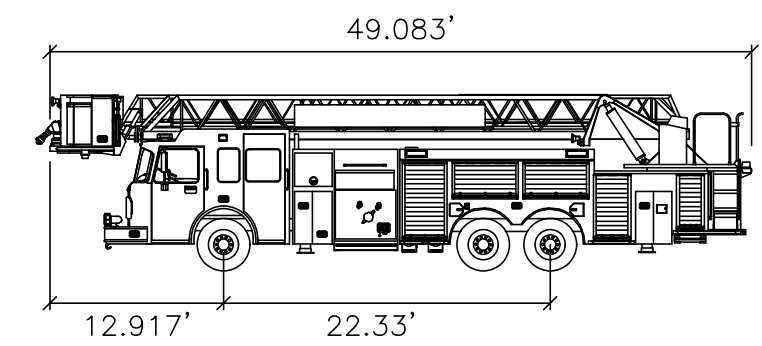
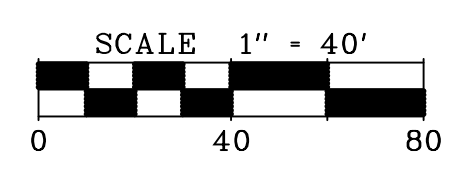
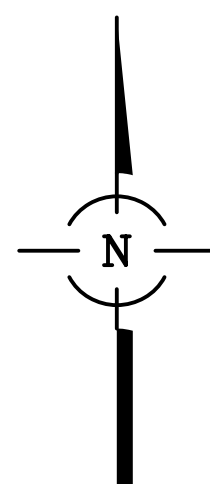
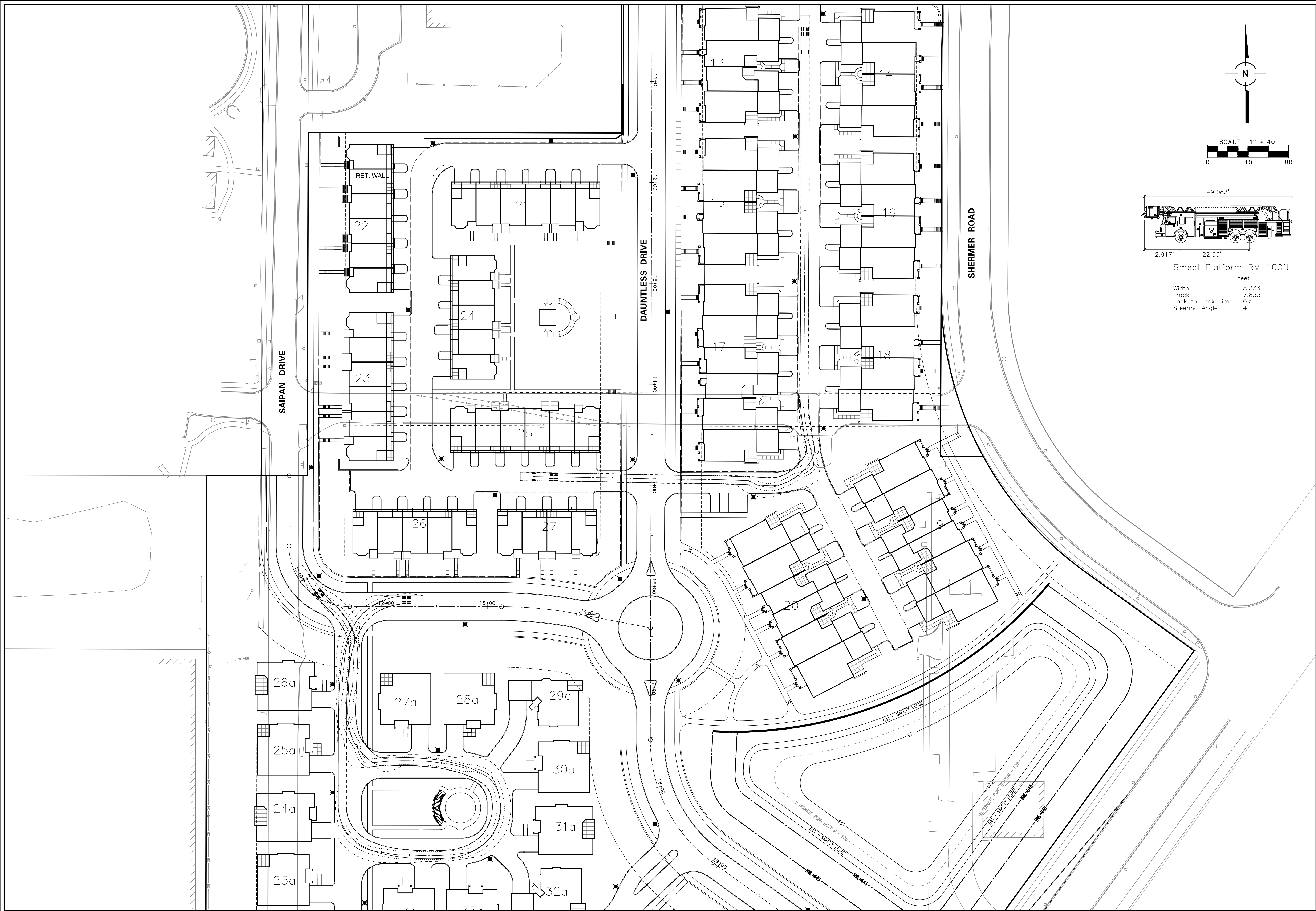
FILENAME:  
7601.02P\_FT03.DGN

DATE:  
05/24/13

JOB NO.  
7601.02

SHEET  
**FT03**  
12 OF 16





Smeal Platform RM 100ft  
 feet  
 Width : 8.333  
 Track : 7.833  
 Lock to Lock Time : 0.5  
 Steering Angle : 4

NO.	DATE	REMARKS

NO.	DATE	REMARKS
2	9/20/13	SITE PLAN REVISIONS
1	6/14/13	SITE PLAN, STORM TRAP REVISIONS

FIRE TRUCK TURN - 4

**WEST GATE AT THE GLEN**  
 GLENVIEW, ILLINOIS

**CONSULTING ENGINEERS**  
**SITE DEVELOPMENT ENGINEERS**  
**LAND SURVEYORS**



9575 W. Higgins Road, Suite 700,  
 Rosemont, Illinois 60018  
 Phone: (847) 696-4060 Fax: (847) 696-4065

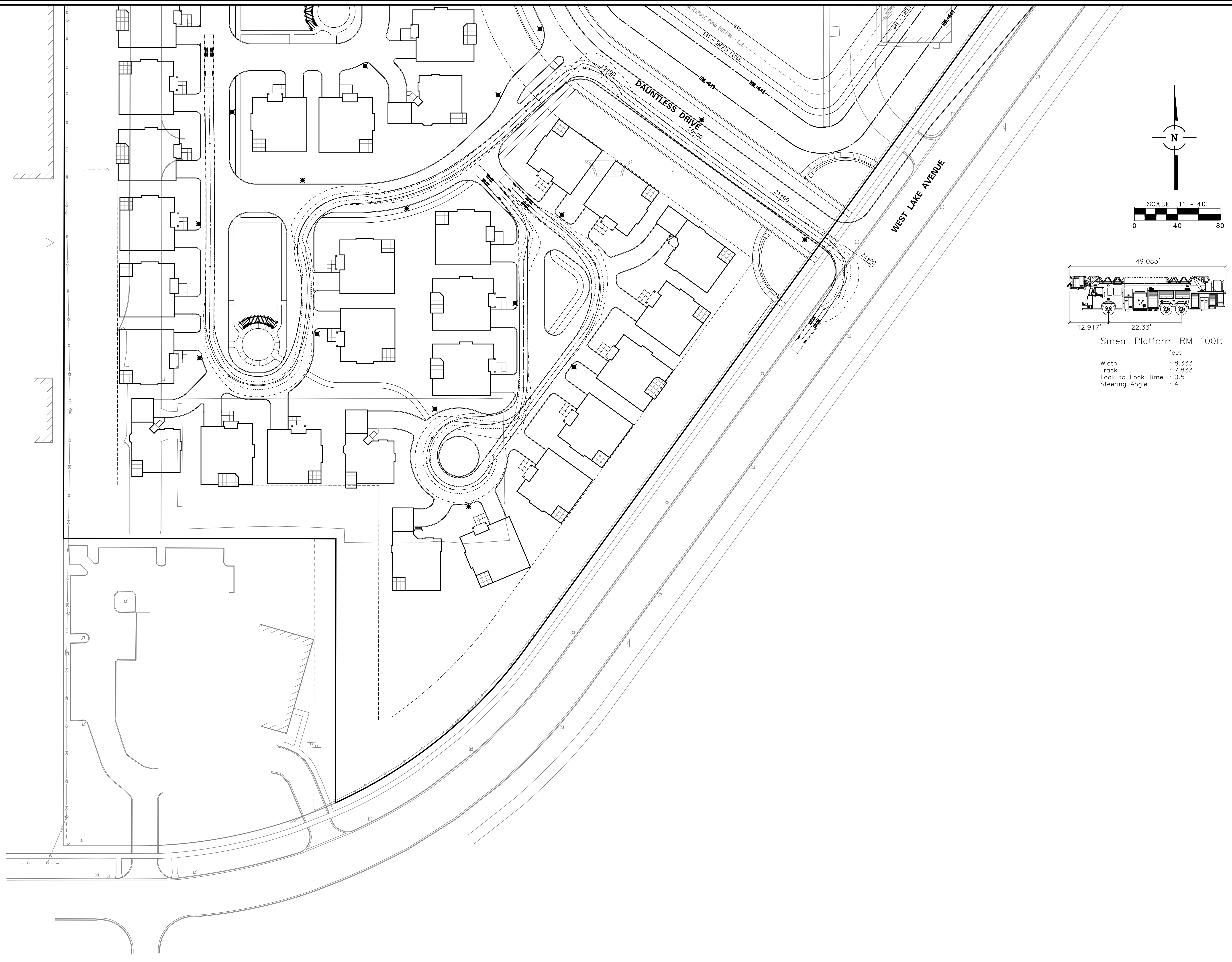
FILENAME:  
 7601.02P\_SNWS\_03.DGN

DATE:  
 05/24/13

JOB NO.  
 7601.02

SHEET  
**FT04**  
 13 OF 16





NO.	DATE	REMARKS

NO.	DATE	REMARKS
2	9/20/13	SITE PLAN REVISIONS
1	6/14/13	SITE PLAN, STORM TRAP REVISIONS

**FIRE TRUCK TURN 5**

**WEST GATE AT THE GLEN**  
GLENVIEW, ILLINOIS

**CONSULTING ENGINEERS**  
**SITE DEVELOPMENT ENGINEERS**  
**LAND SURVEYORS**

9575 W. Higgins Road, Suite 700,  
Rosemont, Illinois 60018  
Phone: (847) 696-4060 Fax: (847) 696-4065



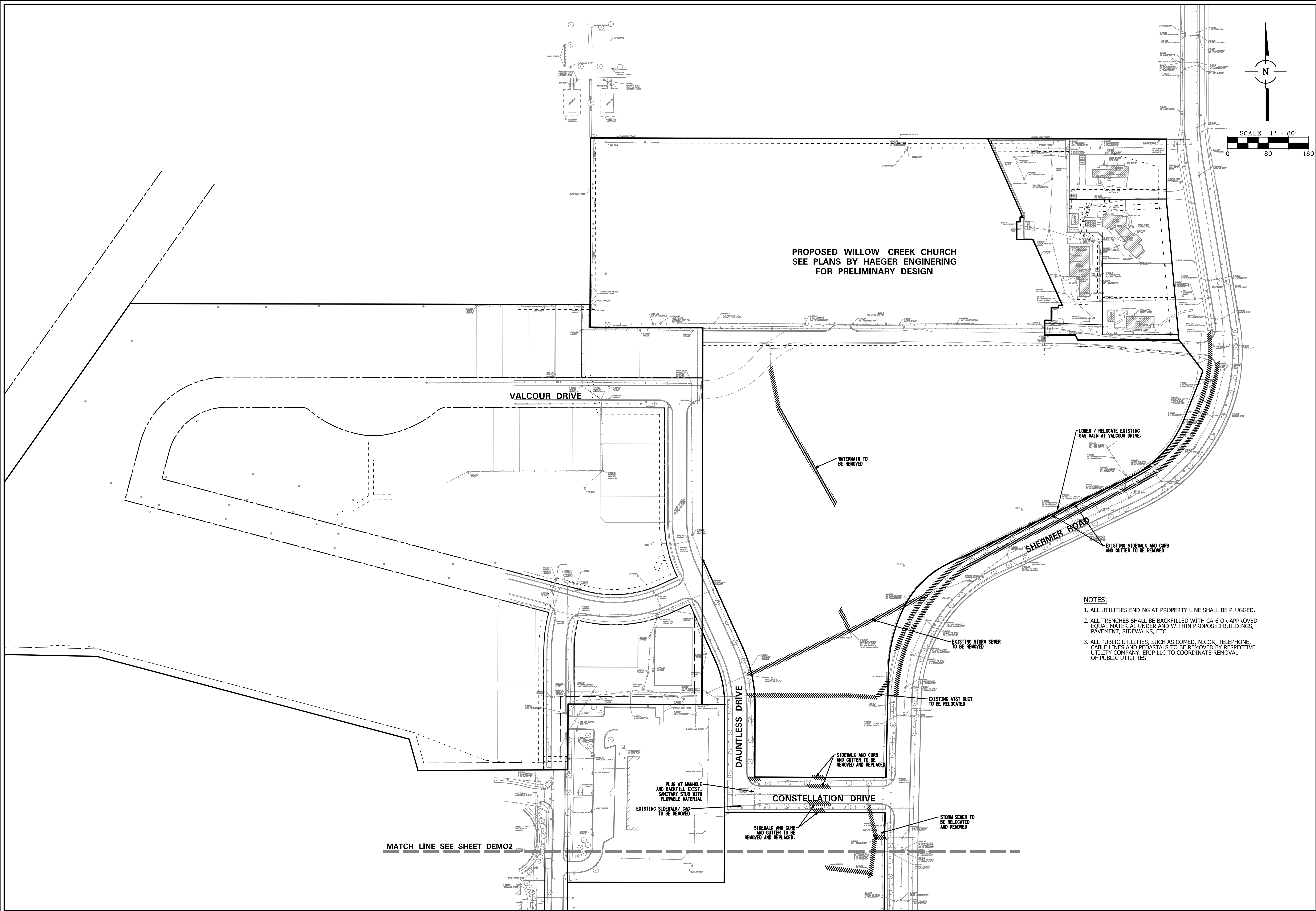
FILENAME:  
7601.02P\_FT05.DGN

DATE:  
05/24/13

JOB NO.  
7601.02

SHEET  
**FT05**  
14 OF 16





PROPOSED WILLOW CREEK CHURCH  
SEE PLANS BY HAEGER ENGINEERING  
FOR PRELIMINARY DESIGN

SCALE 1" = 80'



**NOTES:**

1. ALL UTILITIES ENDING AT PROPERTY LINE SHALL BE PLUGGED.
2. ALL TRENCHES SHALL BE BACKFILLED WITH CA-6 OR APPROVED EQUAL MATERIAL UNDER AND WITHIN PROPOSED BUILDINGS, PAVEMENT, SIDEWALKS, ETC.
3. ALL PUBLIC UTILITIES, SUCH AS COMED, NICOR, TELEPHONE, CABLE LINES AND PEDASTALS TO BE REMOVED BY RESPECTIVE UTILITY COMPANY. ERUP LLC TO COORDINATE REMOVAL OF PUBLIC UTILITIES.

MATCH LINE SEE SHEET DEMO2

NO.	DATE	REMARKS

NO.	DATE	REMARKS
2	9/20/13	SITE PLAN REVISIONS
1	6/14/13	SITE PLAN, STORM TRAP REVISIONS

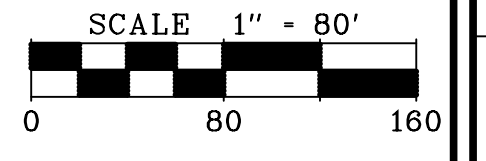
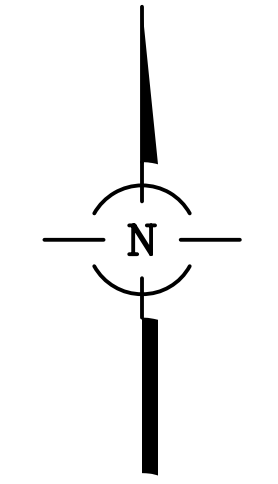
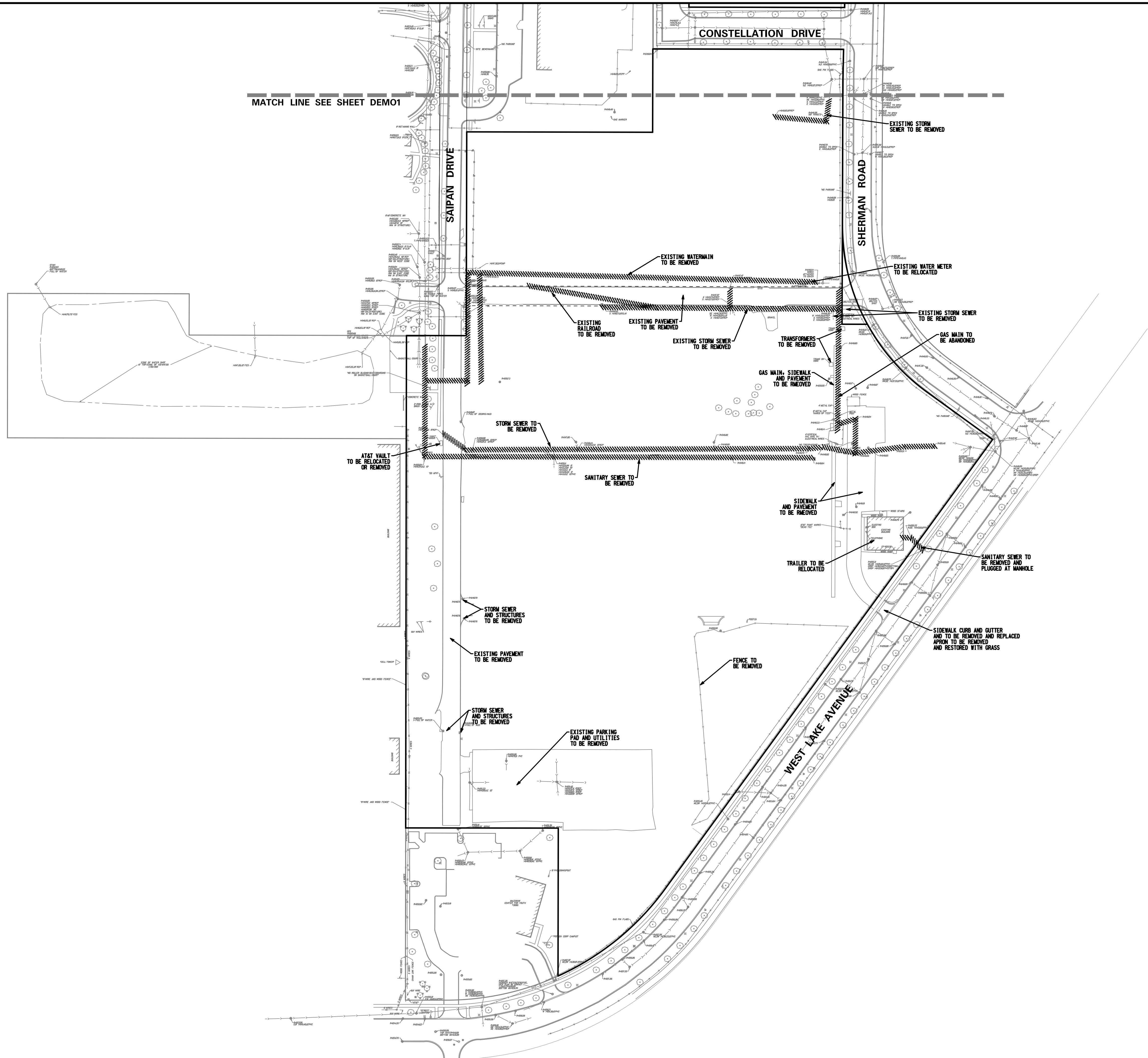
DEMOLITION PLAN - 1  
**WEST GATE AT THE GLEN**  
GLENVIEW, ILLINOIS

CONSULTING ENGINEERS  
SITE DEVELOPMENT ENGINEERS  
LAND SURVEYORS  
SPACECO INC.  
9575 W. Higgins Road, Suite 700,  
Rosemont, Illinois 60018  
Phone: (847) 696-4060 Fax: (847) 696-4065



FILENAME:  
7601.02P\_DEMO\_01.DGN  
DATE:  
05/24/13  
JOB NO.  
7601.02  
SHEET  
**DEMO1**  
15 OF 16





NOTES:  
 1. SEE SHEET DEMO1 FOR NOTE AND LEGEND.

NO.	DATE	REMARKS

NO.	DATE	REMARKS
2	9/20/13	SITE PLAN REVISIONS
1	6/14/13	SITE PLAN, STORM TRAP REVISIONS

**DEMOLITION PLAN - 2**  
**WEST GATE AT THE GLEN**  
 GLENVIEW, ILLINOIS

**CONSULTING ENGINEERS**  
**SITE DEVELOPMENT ENGINEERS**  
**LAND SURVEYORS**  
 9575 W. Higgins Road, Suite 700,  
 Rosemont, Illinois 60018  
 Phone: (847) 696-4060 Fax: (847) 696-4065



FILENAME:  
7601.02P\_DEMO\_02.DGN

DATE:  
05/24/13

JOB NO.  
7601.02

SHEET  
**DEMO2**  
 16 OF 16